

# INSTALLATION INSTRUCTIONS

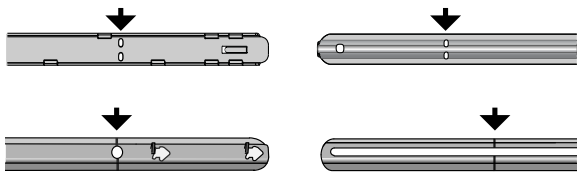
«IC» type Airtight New Construction Housings for LED lamps (except polyurethane)  
3-1/2" and 4" (GU10/PAR16/MR16/PAR20)

FOR INSTALLATION IN INSULATED CEILING - SUITABLE FOR DAMP LOCATIONS

NW2000CA-LED, NW2000CE-LED, NW2000CT-LED, NW2000E-LED, NW2000T-LED,  
NW3000CA-LED, NW3000CE-LED, NW3000CT-LED, NW3000E-LED, NW3000T-LED

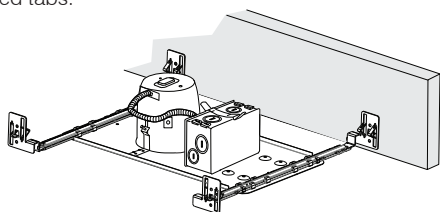
## BEFORE STARTING

If spacing between ceiling joists is **LESS THAN 12" (30 cm)**, shorten the mounting bars **BEFORE** installing. To shorten bars, cut each of the mounting bar sections at the cutting marks indicated by arrows.



### 1. SHUT OFF ELECTRICAL SUPPLY AT SOURCE.

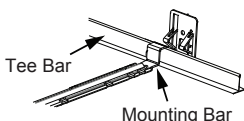
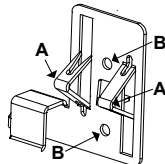
2. Slide mounting bars onto the ends of the housing plate, between the folded tabs.



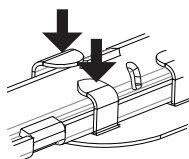
3. Locate the position to which you wish to install the housing then secure mounting bars onto the ceiling joists or the suspended ceiling tee bars.

**Joists:** Hammer tack points (A) or screw (B) the mounting bar onto the joists.

**Suspended ceiling:** Hang the mounting bars onto the tee bars.



4. Slide and align the plate into its correct and final position.  
5. Once the correct bar length is known, fold down and press tabs to lock the plate onto the mounting bars.



6. Bring the electrical wiring to the housing, as per applicable electrical codes.  
7. Remove the junction box cover by pushing on the spring latch. Remove the appropriate knockout(s) to accommodate your wiring. Remove the aluminum tape and store it safely for use in step 11. Connect the wires: Black/Black, White/White and Green/Green. Before closing the junction box, be sure to pull the wire feeding the trim outside the pot, then close the box.

**IMPORTANT:** Leave an extra length of 6" of supply leads and ground wire inside the junction box.

Please keep these instruction installation for future maintenance reference.



### WARNING

The use of other company's (non-Contrast) products or components (e.g. trims) in conjunction with Contrast products may not be covered by UL approvals, and could be hazardous. Such use automatically voids all Contrast warranty and responsibility of these products.

**NW2000CA-LED, NW2000CT-LED, NW2000T, NW3000CA-LED, NW3000CT-LED, NW3000T-LED:**

This product was designed for PAR16 LED, PAR20 LED or GU10 LED lamps. If you want to use a dimmer, please refer regularly to the lamp manufacturer dimmer compatibility list.

**NW2000CE-LED, NW2000E, NW3000CE-LED, NW3000E-LED:**

During Product Development Contrast tested some dimmers that you will find by consulting regularly the dimmer compatibility list on our website at ([www.contrastlighting.com](http://www.contrastlighting.com)). Constant progresses in MR16 LED lamps and dimmers technologies may change in compatibility options that you will find by consulting frequently the lamp manufacturer compatibility list.



### WARNING

SHOCK AND FIRE HAZARD  
Most dwellings built before 1985 have supply wires rated 60°C. Consult a qualified electrician before installing

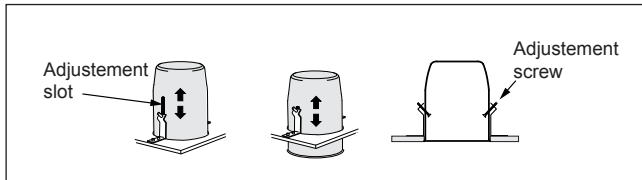


Do not exceed the indicated lamp wattage.

8. Close the ceiling, making sure to locate the center of each fixture on the ceiling material.  
9. Install the ceiling material and cut holes to the appropriate diameter:

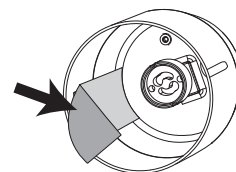
2000 Series: 4-1/4" (108 mm)  
3000 Series: 3-5/8" (92 mm)

10. Adjust the height of the can with the side screws so that the lip is even with the ceiling.

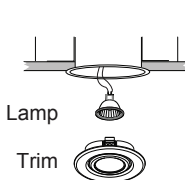


## INSTALLATION OF ALUMINUM TAPE

11. Remove the film on the back of the included aluminum tape.  
12. Apply the aluminum tape inside the housing as to entirely cover hook openings on both sides of the housing.



13. Install lamp and trim:

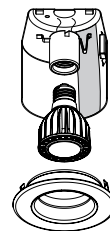


### MR16 LED / GU10 LED 3-1/2" and 4" or PAR16 LED 3-1/2"

- 1 Insert the lamp into the socket.
- 2 Insert the lamp into the trim.
- 3 Insert the trim into the housing.

NW2000CE-LED  
NW2000CT-LED  
NW2000E-LED  
NW2000T-LED  
NW3000CA-LED  
NW3000CE-LED  
NW3000CT-LED  
NW3000E-LED  
NW3000T-LED

\*Do not install the supplied lens.

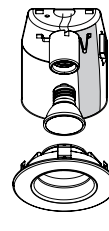


### PAR20 LED 4"

Non adjustable trim

- 1 Attach the socket in the housing while ensuring that there is no wires between the socket and the housing.
- 2 Insert the lamp into the socket.
- 3 Insert the trim into the housing.

NW2000CA-LED



### PAR20 LED and PAR16 LED 4"

Adjustable trim

- 1 Insert the lamp into the socket.
- 2 Insert the lamp into the trim.
- 3 Insert the trim into the housing.

NW2000CA-LED