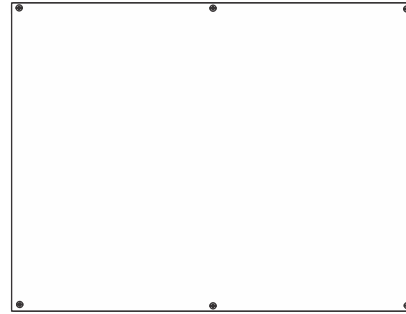




1718 W. Fullerton Chicago, IL 60614
 Ph: 773.770.1195 • Fax: 773.935.5613
 www.PureEdgeLighting.com • info@PureEdgeLighting.com
 © 2016 PureEdge Lighting. All Rights Reserved.

Installation Instructions for **2 X 100 / 3 X 100 / 4 X 100 Watt 24 Volt DC RGB DMX LED Power Supply**



SAVE THESE INSTRUCTIONS!



GENERAL INFORMATION

- **RISK OF FIRE:** This product must be installed by a qualified electrician. Turn the power to the electrical box off during installation. Read the "Important Safety Instructions" before installation.
- **NOTE:** To avoid overheating the power supply, install it in a ventilated remote location where air flows. Maintain proper spacing among power supplies when multiple power supplies are installed in the same remote location.
- This product is not suitable for wet locations. It is approved for the use at any height above the finished floor.
- A typical installation is shown. Specific installation must be in accordance with the local electrical codes.
- **TO REDUCE RISK OF FIRE,** it is important to wire the power supply for the system as described in this installation instruction.
- Load each power supply to **MAXIMUM 100** Watts.
- Use CDP color dial or CTP color touch screen controller with RGB LED soft strip.

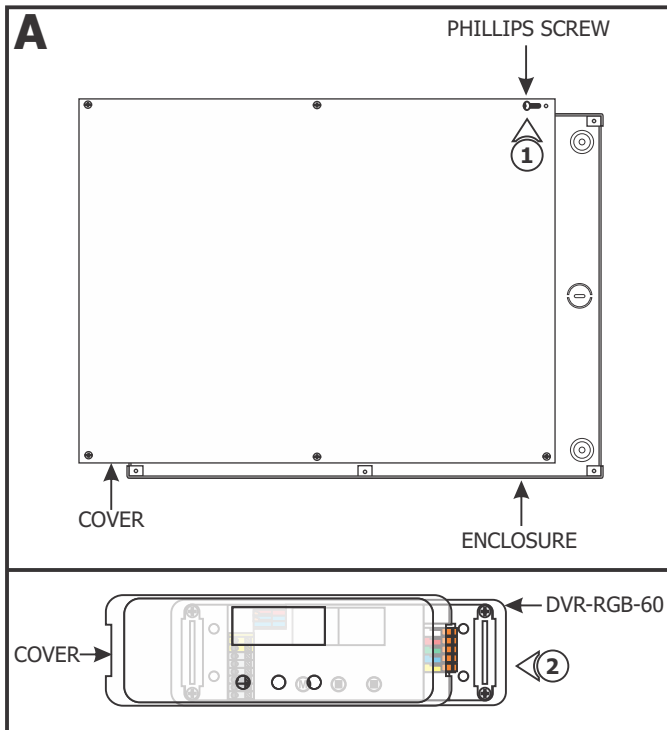
IMPORTANT SAFETY INSTRUCTIONS

- Do not install this power supply in a wet location.
- To reduce the risk of the system overheating and possibly causing a fire, make sure all the connections are tight.
- Do not install *LED fixture closer than three inches or as specified in the *LED fixture installation instructions to curtains or similarly combustible materials. Keep insulation at least 3" away from the enclosure.
- Turn the electrical power off before modifying the lighting system in any way.
- The system is "ETL" listed for USA and Canada only when all the products used are supplied by Edge Lighting.
- * See LED fixture installation instructions for proper placement.

100W, 24VAC LOW VOLTAGE WIRE SIZE CHART

3% VOLTAGE DROP	WIRE LENGTH IN FT	UP TO 31FT	32FT-49FT	50FT-81FT	82FT-124FT
	WIRE SIZE	14 AWG	12 AWG	10 AWG	8 AWG
	VOLTAGE AT END OF THE WIRE	23.28 VAC	23.29 VAC	23.28 VAC	23.28 VAC

Using LED Power Supply with RGB Soft Strip & CDP or CTP Controller



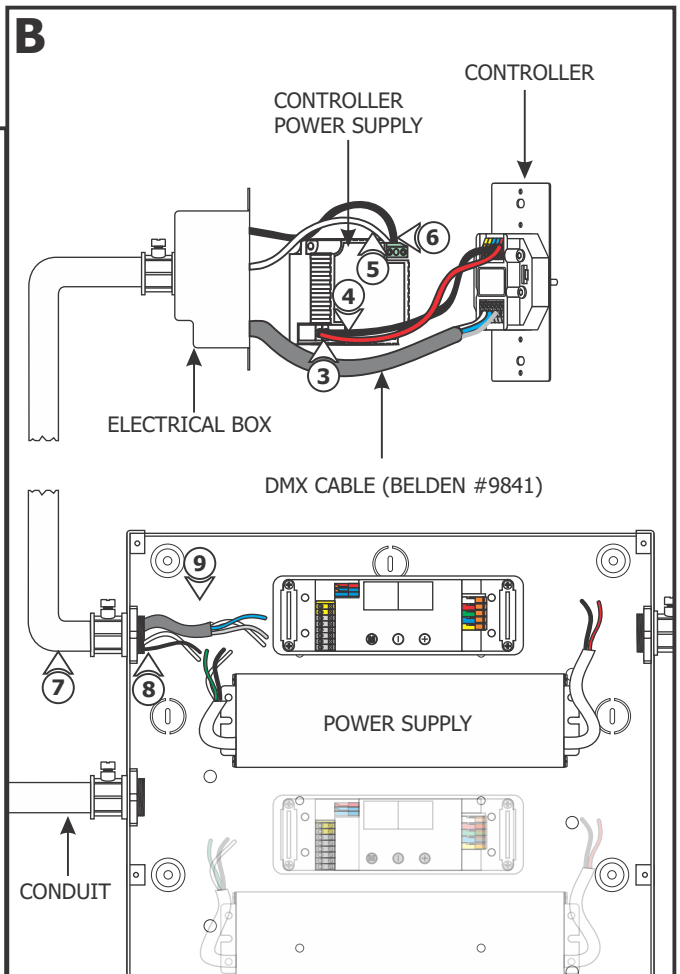
1: Loosen the six Phillips screws on front of the power supply to remove the cover.

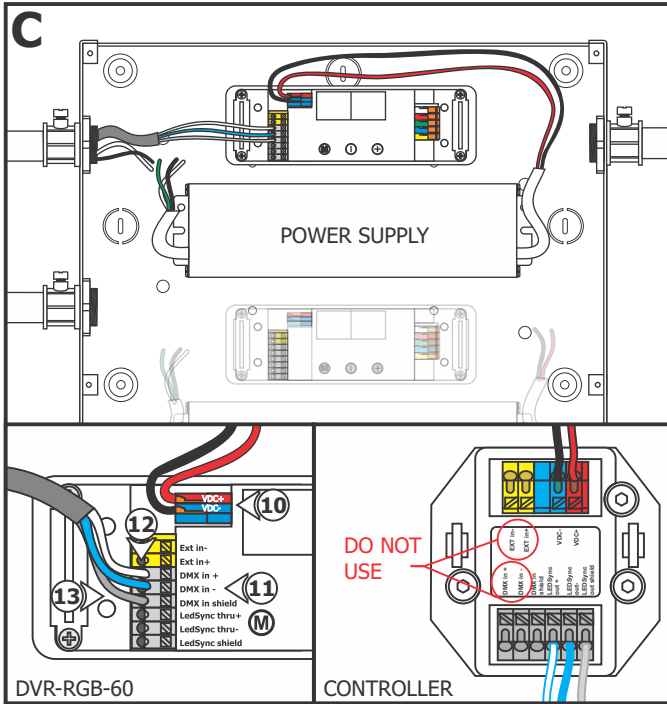
2: Carefully pull off the cover from the DVR-RGB-60 driver.

NOTE: Use a deep double gang boxes to fit the controller and controller power supply.

NOTE: Refer to the "Configuring and Operating Dim Wheel" on pages 5 and 6 to properly operate the controller.

- 3:** Connect one end of a red wire to the "VDC+" terminal of the controller and the other end to the "+24VDC" terminal of the controller power supply.
- 4:** Connect one end of a black wire to the "Ground" terminal of the controller and the other end to the "-24VDC" terminal of the controller power supply.
- 5:** Connect the white wire to the "N" terminal of the controller power supply.
- 6:** Connect the black wire to the "L" terminal of the controller power supply.
- 7:** Install conduits from the controller, main panel (line voltage), and soft strip to the power supply enclosure.
- 8:** Run the black and white line voltage wires coming from the controller power supply to the power supply enclosure.
- 9:** Run the proper size DMX cable (**Belden #9841 recommended**) with three data wires from controller to the power supply box.

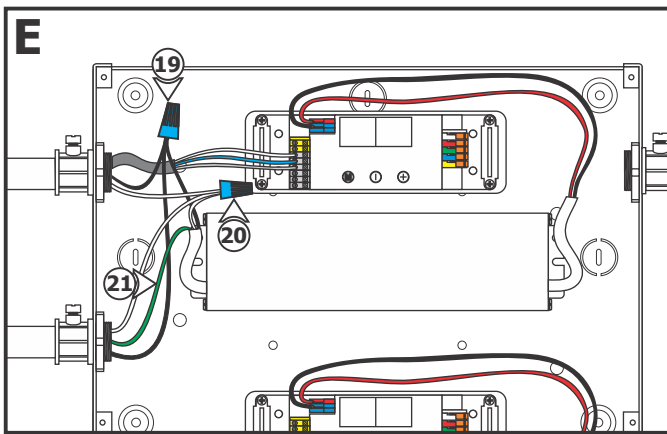
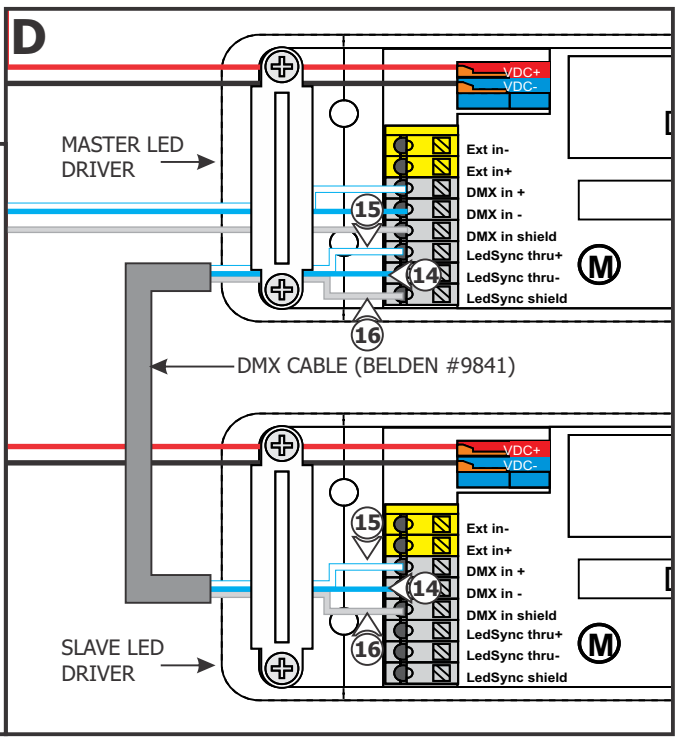




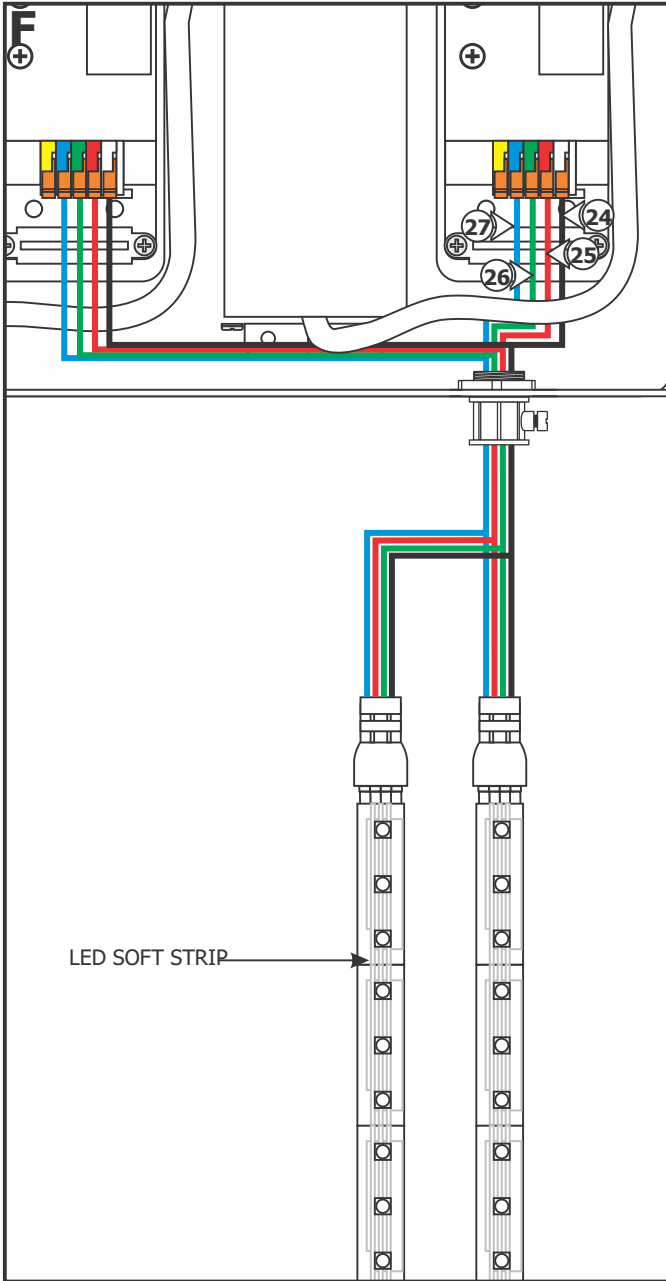
- 10:** Install a red wire from the power supply to DVR-RGB-60 "VDC+" red terminal and a black wire from power supply to DVR-RGB-60 "VDC-" blue terminal.
- 11:** Connect one end of a data wire (blue with white stripes wire) to controller "LEDSYNC OUT-" terminal. Connect the other end into the DVR-RGB-60 "DMX in -" terminal.
- 12:** Connect one end of a data wire (white with blue stripes wire) to controller "LEDSYNC OUT+" terminal. Connect the other end into the DVR-RGB-60 "DMX in +" terminal.
- 13:** Connect one end of a data wire (bare shield wire) to controller "LEDSYNC SHIELD" terminal. Connect the other end into the DVR-RGB-60 "DMX in shield" terminal.

NOTE: "DMX in+", "DMX in-", "EXT in+" & "EXT in-", controller terminals are not used on controller.

- NOTE:** Use instructions below to wire master LED driver to additional slave LED drivers.
- 14:** Connect one end of a data wire (blue with white stripes wire) to master LED driver "LEDSYNC OUT-" terminal. Connect the other end into the DVR-RGB-60 "DMX in -" terminal.
 - 15:** Connect one end of a data wire (white with blue stripes wire) to master LED driver "LEDSYNC OUT+" terminal. Connect the other end into the DVR-RGB-60 "DMX in +" terminal.
 - 16:** Connect one end of a data wire (bare shield wire) to to master LED driver "LEDSYNC SHIELD" terminal. Connect the other end into the DVR-RGB-60 "DMX in shield" terminal.
 - 17:** Repeat steps 14-16 for additional slave LED drivers.



- 18:** Run the line voltage power wires into the power supply.
- 19:** Connect the hot power wire to the black power supply wire and black controller power supply wire with a wire nut.
- 20:** Connect the neutral power wire to the white power supply wire and white controller power supply wire with a wire nut.
- 21:** Make sure the green transformer wire is grounded in accordance with local electrical codes.



NOTE: The DVR-RGB-60 terminals adapt maximum 18 AWG size. To avoid voltage drop, use 6" of 18 AWG size in RGB terminals connected inline to proper size gauge wire attached to the RGB LED wires with wire nuts. See the "Low Voltage Wire Size Chart" on page 1.

NOTE: Do not exceed the maximum wattage of the power supply.

NOTE: Use only 24 volt LED RGB soft strip with this power supply.

22: Use the "Low Voltage Wire Size Chart" on page 1 to determine proper wire size connecting to the DVR-RGB-60 terminals.

23: Run the proper size green, red, blue, and black wires from the RGB LED soft strip to the power supply enclosure.

24: Connect the black wire into the DVR-RGB-60 "LED SUPPLY +" white terminal. Connect the other end to the black wire(s) of the RGB soft strip.

25: Connect the red wire into the DVR-RGB-60 "Group 1-" red terminal. Connect the other end to the red wire(s) of the RGB soft strip.

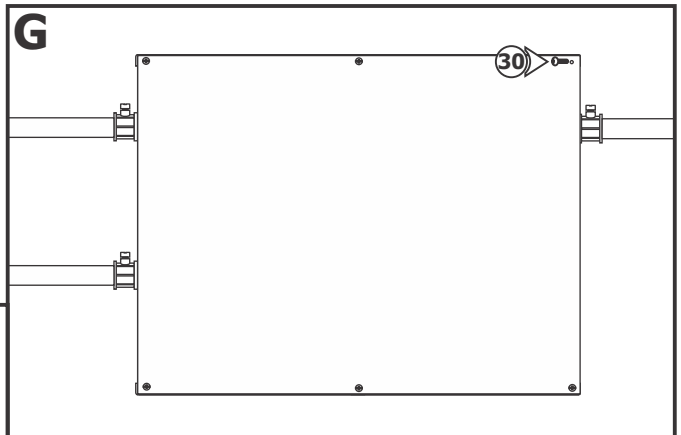
26: Connect the green wire into the DVR-RGB-60 "Group 2-" green terminal. Connect the other end to the green wire(s) of the RGB soft strip.

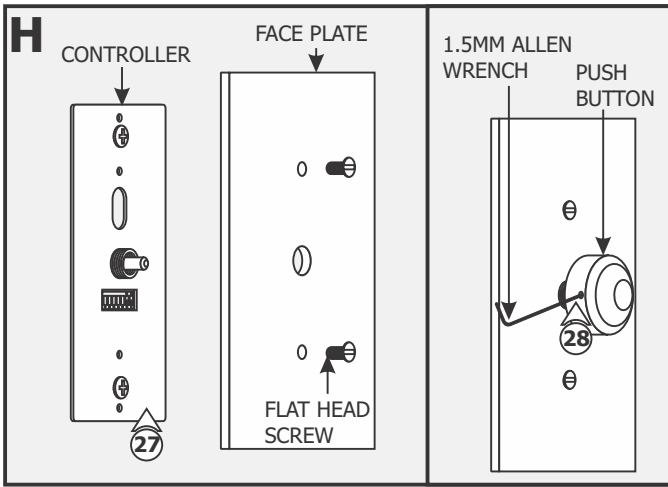
27: Connect the blue wire into DVR-RGB-60 "Group 3-" blue terminal. Connect the other end to the blue wire(s) of the RGB soft strip.

28: Repeat steps 23-27 for additional DMX controllers and soft strips.

29: Replace the DVR-RGB-60 cover.

30: Replace the power supply cover and secure it by tightening the six Phillips screws.





31: Align the face plate to the controller and secure using the two flat head screws.

32: Attach the push button onto the controller center rod and secure by tightening the M3 set screw with the 1.5mm Allen wrench provided.

Configuring and Operating Dim Wheel

Selecting Modes

Configure your CDP by setting the DIP switches on the front:



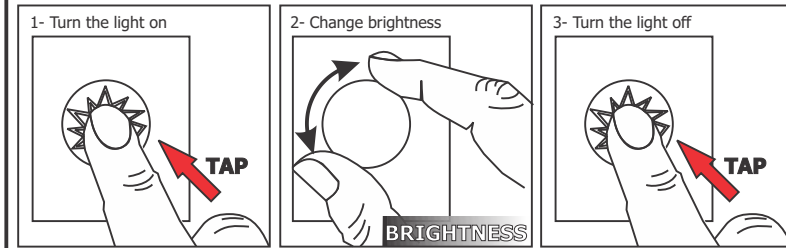
COLOR MODE



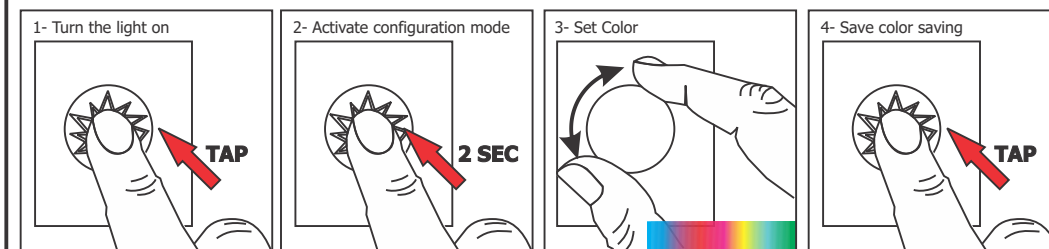
CHASE MODE

NOTE: The DIP switches must remain accessible after installation. When making changes in the DIP switch settings, disconnect and reconnect the power supply to activate new settings.

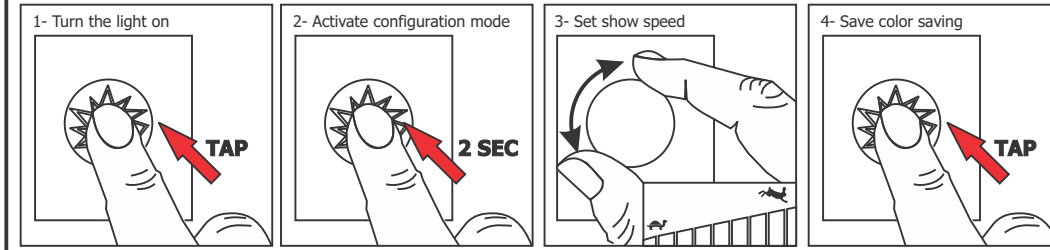
Operating CDP



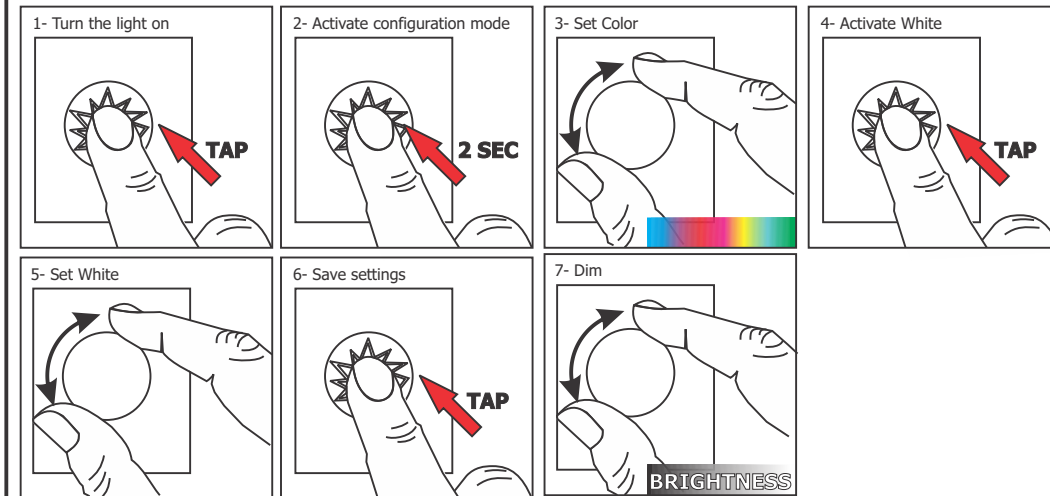
Advanced Operation for Color Mode



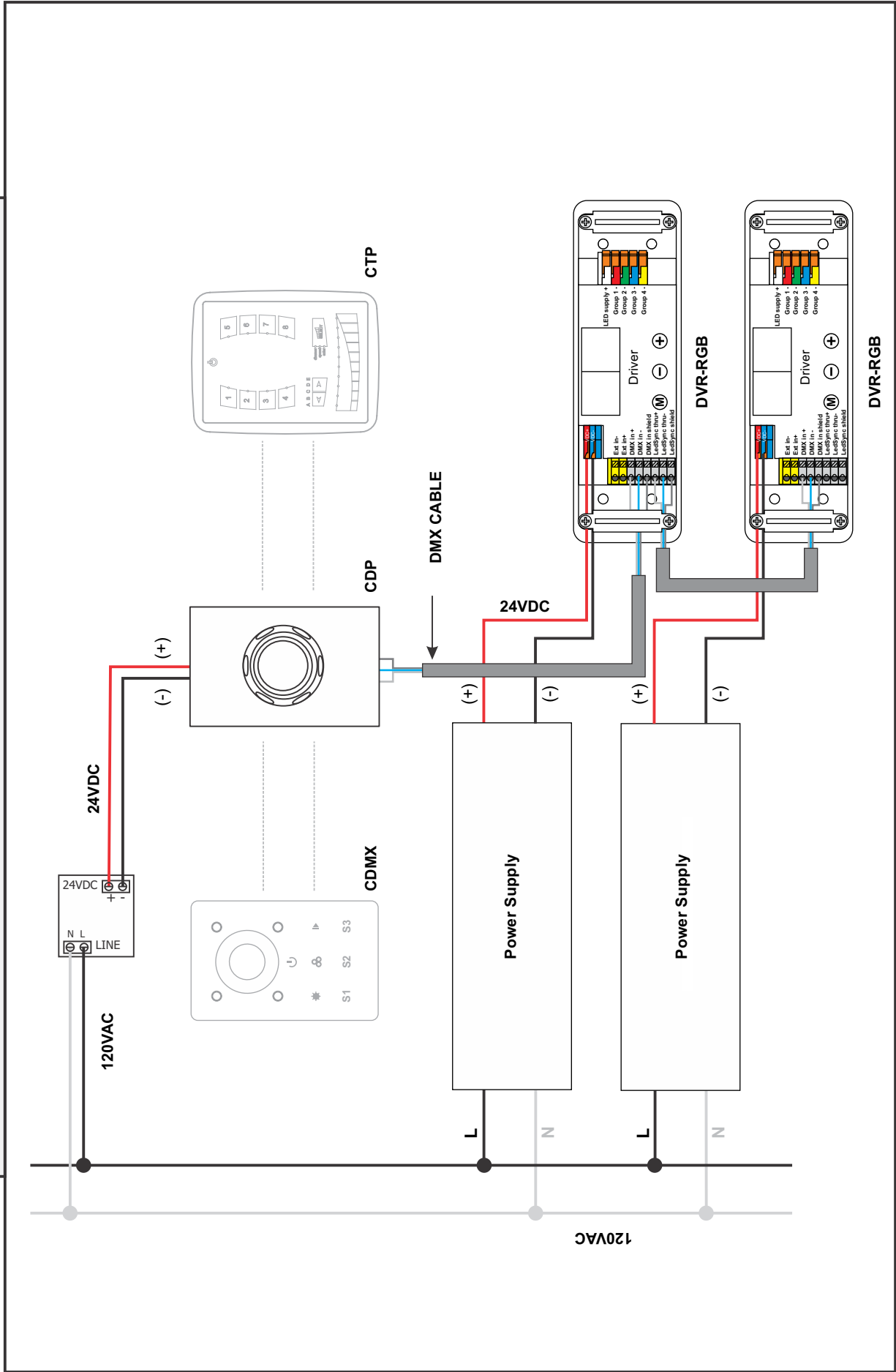
Advanced Operation for Chase Mode



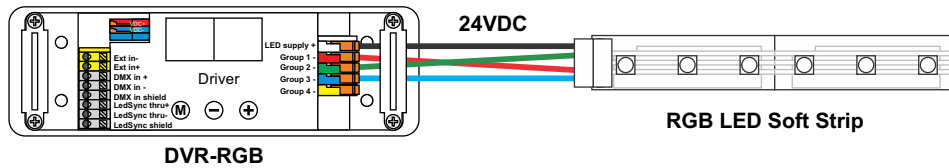
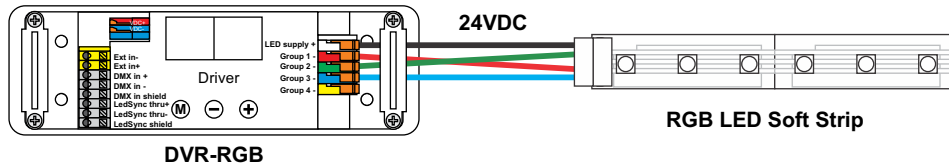
Advanced Operation for RGBW



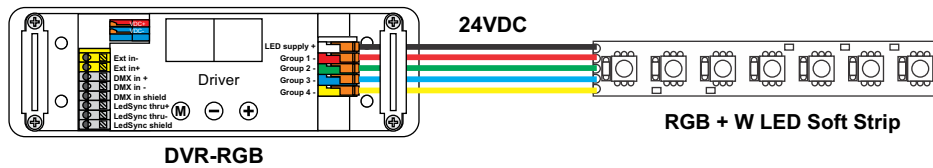
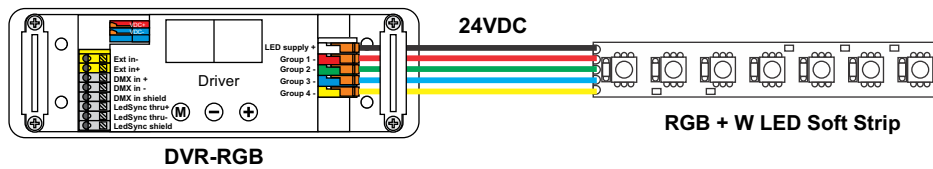
Input Wiring Diagram for 2x100W (Shown)



Output RGB Wiring for 2x100W (Shown)



Output RGB+W Wiring for 2x100W (Shown)



Output Tunable White Wiring Diagram for 2x100W (Shown)

