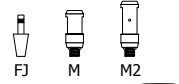




Compatible System Connectors



FJ-LOW-1-SN-S1-SN
Satin Nickel with Satin Nickel S1 Shade



FJ-LOW-1-BZ-S2-BZ
Antique Bronze with Antique Bronze S2 Shade



FJ-LOW-1-BZ-S1-BZ
Antique Bronze with Antique Bronze S1 Shade



FJ-LOW-1-BZ-S3-AM-BZ
Antique Bronze with Antique Bronze S3 Amber Shade



FJ-LOW-1-BZ-S5-BZ
Antique Bronze with Antique Bronze S5 Shade



FJ-LOW-1-SN-S2-PN
Satin Nickel with Polished Nickel S2 Shade & LED MR16 lamp



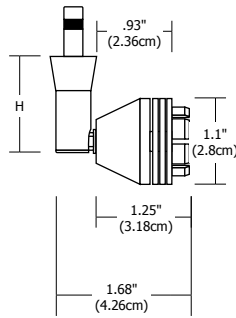
FJ-LOW-1-PN-S1-PN
Polished Nickel with Polished Nickel S1 Shade



FJ-LOW-1-SN-S3-WH-SN
Satin Nickel with Satin Nickel S3 White Shade



FJ-LOW-1-PN-S5-PN
Polished Nickel with Polished Nickel S5 Shade



Description:

Petite yet versatile, the classic Low Rider spotlight rotates 360° and tilts 90°. Select from a variety of shades to personalize the timeless design. The fixture is **LED** compatible when using the S2 Mesh Shade.

System Compatibility:

Monorail (M) or Monorail 2 Circuit (M2) Use Fast Jack (FJ) version for FJ canopies

Height:

1.2" (3cm), 3" (7.6cm), 6" (15.2cm), 12" (30.5cm) or 18" (45.7cm)

Finish:

Satin Nickel, Polished Nickel or Antique Bronze

Lamp Specifications:

Maximum 50 watt IR MR16 lamp GU5.3 base - 12 or 24 volt
LED MR16-12VAC compatible with S2 Mesh Shade only (sold separately)

Required Shades (sold with Low Rider or separately):

S1 - Little Solid Shade, S2 – Little Mesh Shade, S3 – Round Glass Shade or S5 – Big Solid Shade

See Accessories Spec Sheet for Complete Details

Optical Accessories (sold separately):

Hexcell Louver, Glass Lenses or Snoot

Weight:

.40 lb (.18 kg)

System		Fixture		Height (H)		Finish		SHADE ACCESSORY CODE		
FJ		LOW		1		SN		Accessory	Glass Color*	Finish
FJ	Fast Jack	LOW	Low Rider	1	1.2" (3cm)	SN	Satin Nickel	S3	AM	SN
M	Monorail			3	3" (7.6cm)	PN	Polished Nickel	S1	AM	SN
M2	Monorail 2 Circuit			6	6" (15.2cm)	BZ	Antique Bronze	S2	WH	PN
				12	12" (30.5cm)			S3		BK
				18	18" (45.7cm)			S5		

* Leave blank for S1, S2, S5