



1718 W. Fullerton Chicago, IL 60614  
 Ph: 773.770.1195 • Fax: 773.935.5613  
 www.PureEdgeLighting.com • info@PureEdgeLighting.com  
 © 2016 PureEdge Lighting. All Rights Reserved.

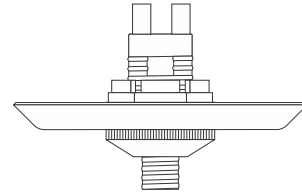
## Installation Instructions for 2" Round & Square Fast Jack Power Canopies with 2" Plaster Ring

FJP-2\_--

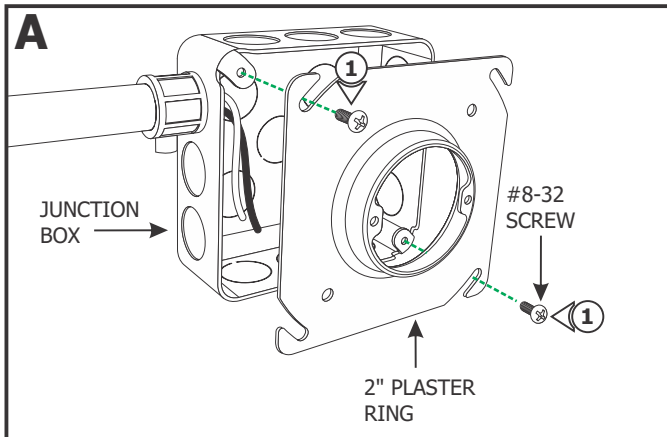
### IMPORTANT INFORMATION

- This product is ETL listed for indoor dry locations.
- This product is installed to a 4" electrical box or to an octagon electrical box using the 2" plaster ring provided.
- Minimum electrical box volume must be 6 cubic inches (98 cubic centimeters).
- This product is for use only with halogen fixtures.

**SAVE THESE INSTRUCTIONS!**



### Install the 2" Plaster Ring For New Construction



**NOTE:** Junction box must be mounted to allow clearance of 1/2" between the face of the junction box and the drywall surface.

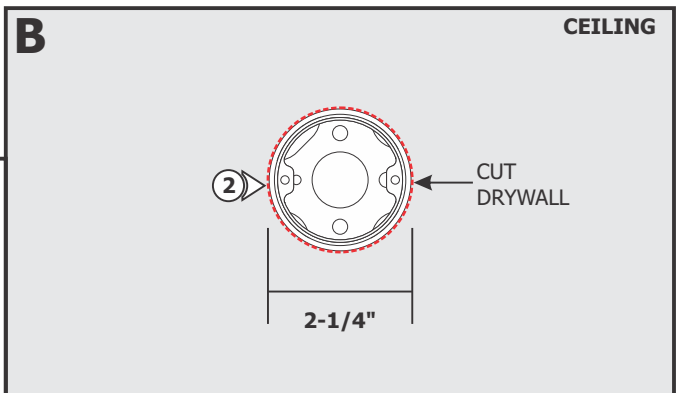
**NOTE:** 24VDC power wires must be present inside the junction box. Refer to the installation instructions provided with the power supply.

**1:** Install the 2" plaster ring to the junction box using two #8-32 screws.

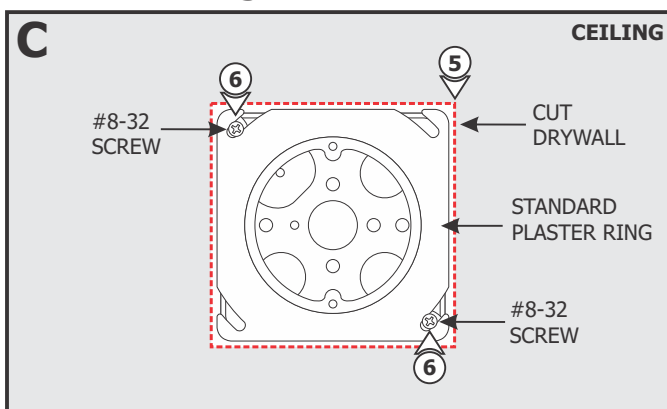
**2:** Use a circular saw to cut out the drywall section where the plaster ring is located.

**3:** Install the drywall. If necessary plaster, and finish the drywall.

**4:** Complete the installation by following steps in "Install Fast Jack Port" section.



### For Remodeling



**5:** Cut away the drywall where the junction box is located.

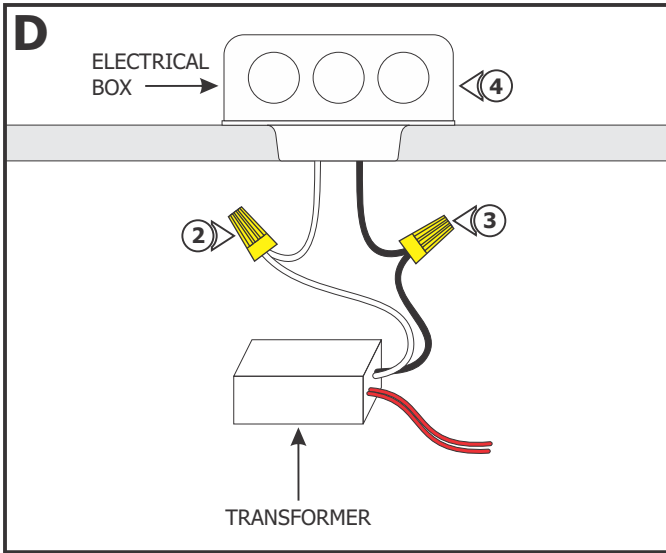
**6:** Uninstall the existing plaster ring by removing the #8-32 screws.

**7:** Install the 2" Plaster Ring to the junction box using two #8-32 screws.

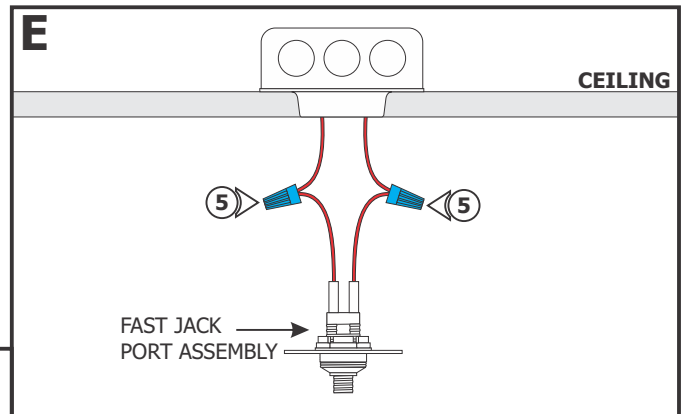
**8:** Plaster and finish around the junction box opening.

**9:** Complete the installation by following steps in "Install Fast Jack Port" section.

# Install Fast Jack Port

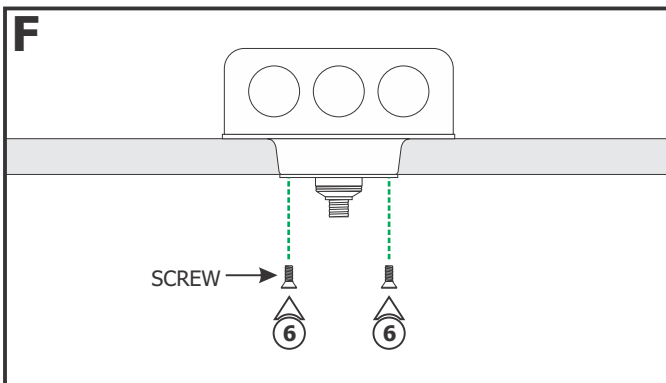


- 1:** Turn the power to the electrical box off.
- 2:** Connect the white transformer wire to the neutral power wire with a wire nut.
- 3:** Connect the black transformer wire to the line power wire with a wire nut.
- 4:** Place the transformer and connections inside the electrical box.

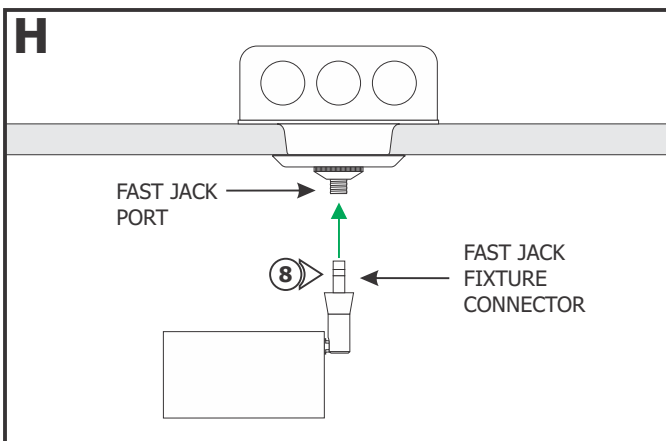
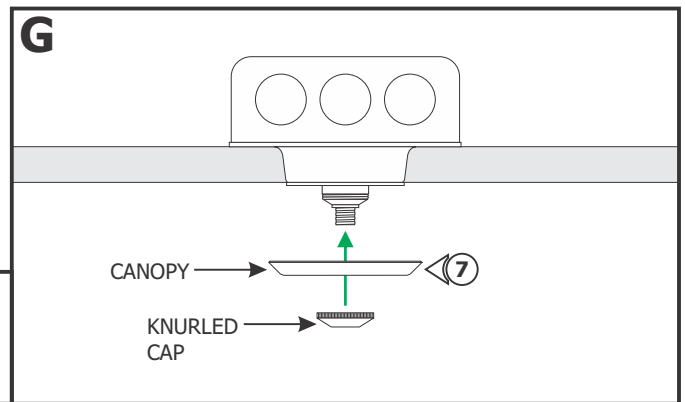


- 5:** Connect each transformer wire to one wire of the Fast Jack Port assembly with a wire nut.

- 6:** Place all wire and wire nut connections properly inside the electrical box. Mount the Fast Jack Port assembly to the 2" plaster ring using the screws provided.



- 7:** Place the canopy onto the Fast Jack port against the electrical box and secure it in place by tightening the knurled cap to the Fast Jack port. **Make sure the knurled cap is not cross threaded.**



**CAUTION: Risk of Fire: Max** load of Fast Jack canopy is **75 watt.**

- 8:** Use fingers to tighten the Fast Jack fixture connector into the Fast Jack canopy port.