



1718 W. Fullerton Chicago, IL 60614  
 Ph: 773.770.1195 • Fax: 773.935.5613  
 www.PureEdgeLighting.com • info@PureEdgeLighting.com  
 © 2016 PureEdge Lighting. All Rights Reserved.

## Installation Instructions for **100 watt, 700MA, Constant Current RGB or RGBA(W) Driver**

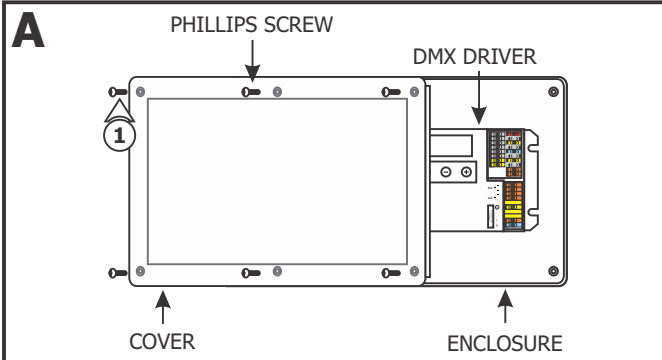
**PSB-700MA-100W-RGBW**

### IMPORTANT INFORMATION

- This driver is used with SUN3 and SUN3 Ceiling RGB and RGBA versions. Refer to the instructions provided with the fixture concurrently using these instructions for power supply to complete installation.

**SAVE THESE INSTRUCTIONS!**

## Install the Constant Current DMX Driver

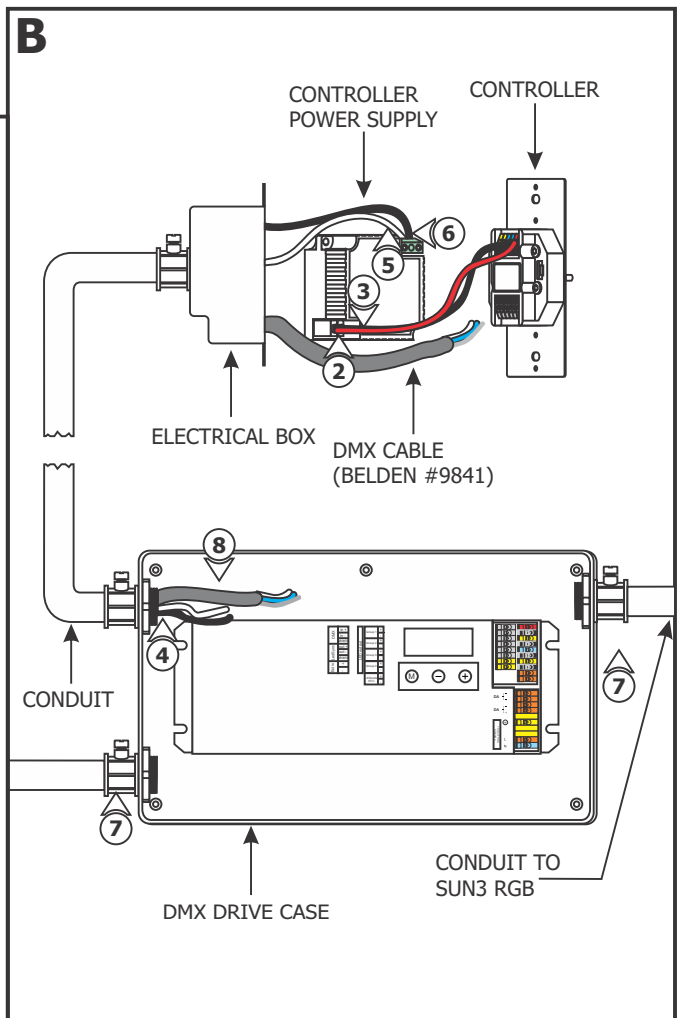


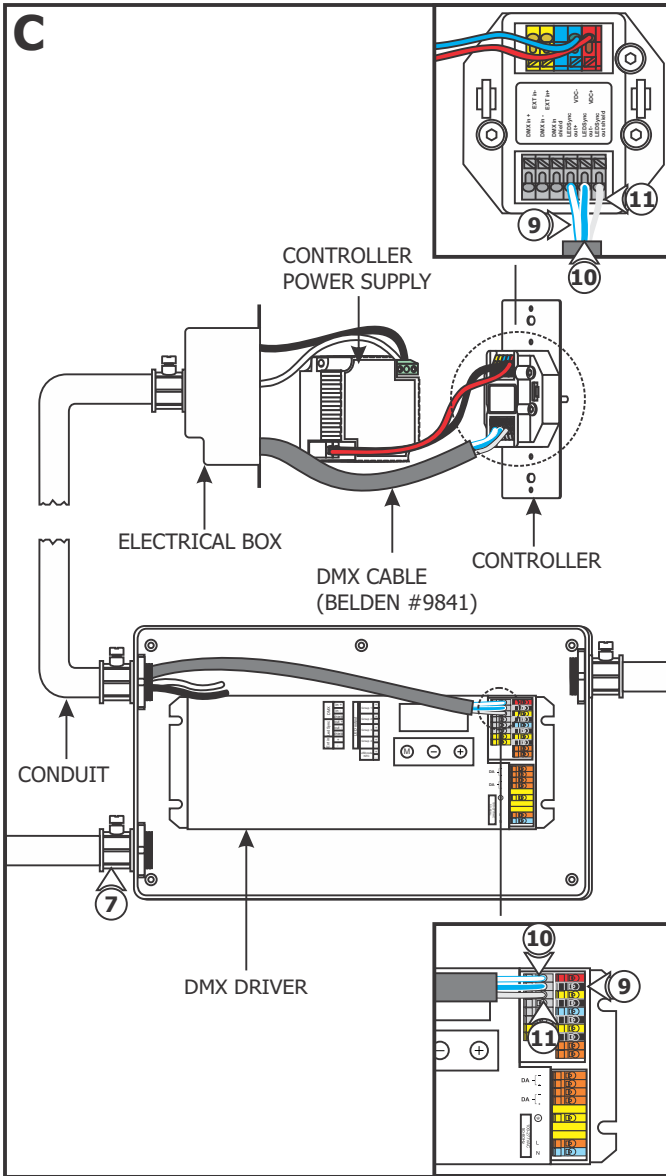
**1:** Loosen the six Phillips screws on front of the DMX driver to remove the cover.

**NOTE:** Use deep double gang boxes to fit the controller and controller power supply.

**NOTE:** Refer to the "Configuring Controller" on Pages 3 and 5 to properly operate the controller and program the DMX driver.

- 2:** Connect one end of a red wire to "VDC+" of the controller terminal and the other end of the red wire to the "+24VDC" of the power supply terminal.
- 3:** Connect one end of a black wire to "Ground" of the controller terminal and the other end to the "-24VDC" of the power supply terminal.
- 4:** Install a conduit from the controller electrical box to the DMX driver enclosure and run the black and white line voltage wires coming from the controller power supply to the DMX driver enclosure.
- 5:** Connect the white wire to "N" terminal of the controller power supply.
- 6:** Connect the black wire to "L" terminal of the controller power supply.
- 7:** Install conduits from the controller, to the main panel (line voltage), and to the SUN3 housing(s).
- 8:** Run proper DMX cable (**Belden #9841 recommended**) with three data wires from the controller to the power supply enclosure.





**9:** Connect one end of a data wire (blue with white stripes wire) to controller "LEDSYNC OUT -" terminal. Connect the other end into the DMX driver "DMX in -" terminal.

**10:** Connect one end of a data wire (white with blue stripes wire) to controller "LEDSYNC OUT+" terminal. Connect the other end into the DMX driver "DMX in+" terminal.

**11:** Connect one end of a data wire (bare shield wire) to controller "LEDSYNC SHIELD" terminal. Connect the other end into the DMX driver "DMX in shield" terminal.

**NOTE:** Do not sure the DMX terminals on the controller.

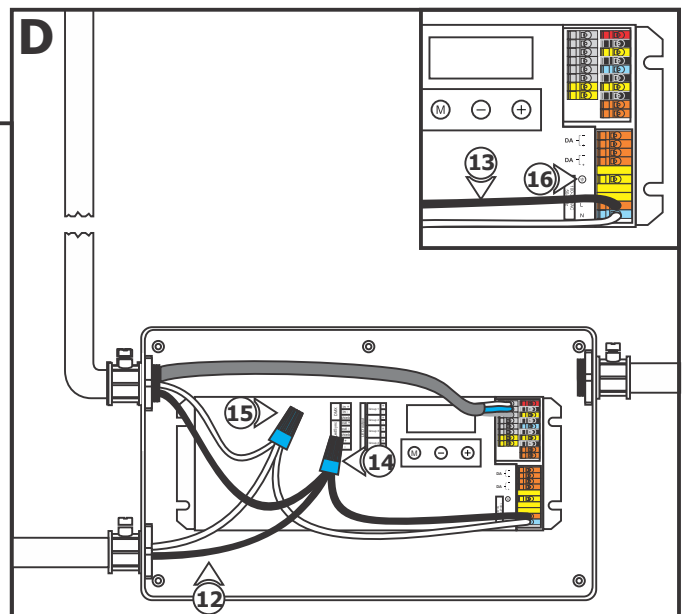
**12:** Run the line voltage power wires into the DMX driver enclosure.

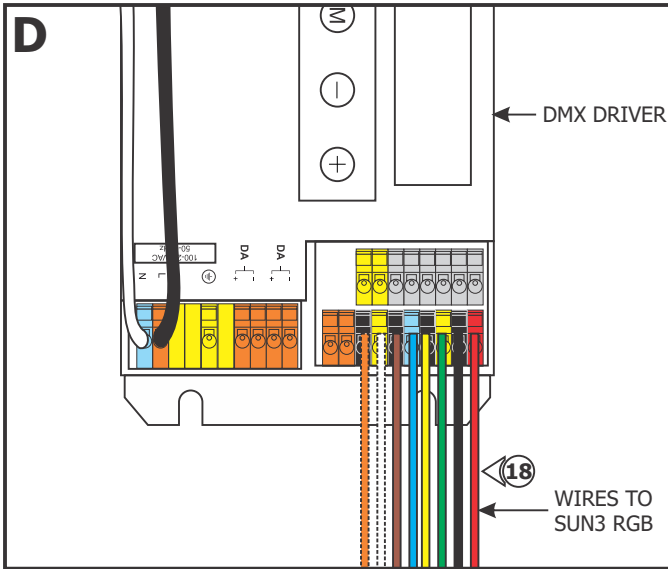
**13:** Connect 6" of #18AWG black & white pigtail wires to the line & neutral DMX driver terminals.

**14:** Connect the black DMX driver pigtail wire to the black wire coming from the controller and to the hot wire with a wire nut.

**15:** Connect the white DMX driver pigtail wire to the white wire coming from the controller and to the neutral wire with a wire nut.

**16:** Make sure the DMX driver is grounded in accordance with local electrical codes, using the earth ground terminal on the DMX driver.





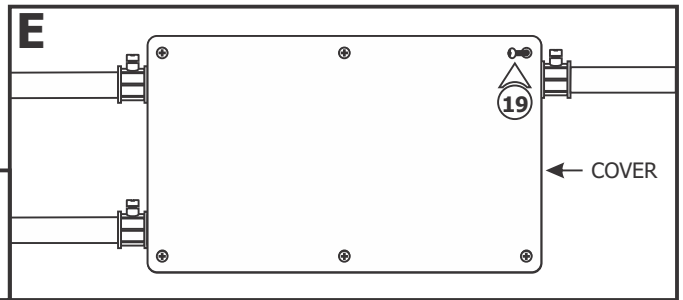
**NOTE:** The DMX Driver terminals accept maximum #18AWG wire. Use 6" pigtails of each color connecting to the DMX driver before choosing the proper gage wires connecting the driver to each fixture.

**NOTE:** Follow steps 1 through 11 on "Install the Sun3 Ceiling Housing" first, before following the remaining steps below.

**17:** Run the proper pig tail wire colors (red, black, green, yellow, blue, brown, white, & orange) into the appropriate DMX terminals.

**18:** Connect the proper gage color wires to each pig tailed wire going to the Sun3 RGB fixture. Refer to the wiring diagram on Page 5 for reference.

**NOTE:** Do not exceed the maximum wattage and distance of the DMX driver. Max 10 Sun3 RGB fixtures can be connected to the DMX driver.



**19:** Replace the DMX driver cover and secure it by tightening the six Phillips screws.

**20:** Follow the steps in "Install the Drywall & Trim."

## Operation Guide for CDP Controller

### Selecting Modes

Configure your CDP Controller by setting the DIP switches on the front:



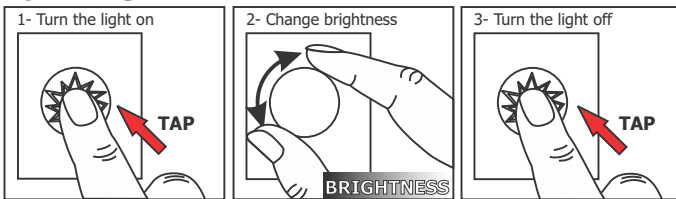
COLOR MODE



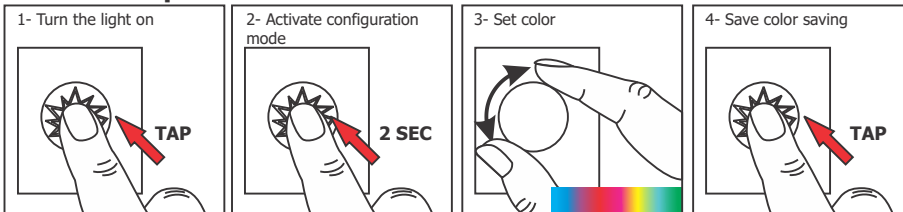
CHASE MODE

**NOTE:** The DIP switches must remain accessible after installation. When making changes in the DIP switch settings, disconnect and reconnect the power supply to activate new settings.

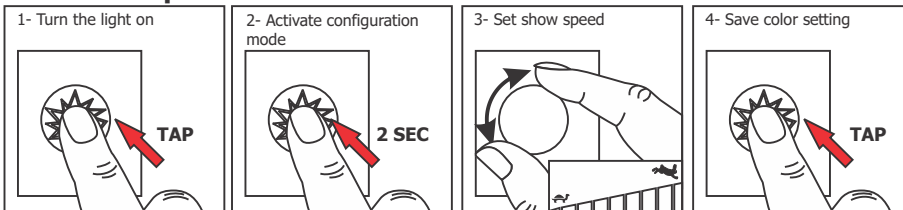
### Operating Controller



### Advanced Operation for Color Mode



### Advanced Operation for Chase Mode



# Programming Guide for DMX Driver

## Pressing **M**

- Shows the current mode or the next menu item; use the M button to browse menus and settings without making any changes.
- Saves a changed value.
- Turns off the display at the last menu item.

## Pressing **+** or **-**

- Changes a value (which is only saved when M is pressed).

Accidentally changed a value but haven't confirmed it yet by pressing M? By refraining from pressing the buttons for at least 8 seconds, the display will turn itself off without changing the value.

If you are in a menu and want to change to another menu, refrain from pressing the buttons for at least 8 seconds so the display turns off, and subsequently press the button combination for the menu you want to change to.

**1:** Set mode of operation: color or show mode for standalone operation, DMX or DALI mode for networked operation:  
Press **M** for 5 sec.

**2:** Set LED output current (if applicable\*) and LED group configuration:

Press **M + +**

- The value increases by 50mA. Set the output current to **700mA**.
- Set the LED groups to **1-1L RGB**.
- To automatically configure the POWERdrive's LED outputs using LEDcode:  
Get your configuration code from [www.ledcode.com](http://www.ledcode.com)
- Enter the configuration code - your LEDcode - in the LEDcode menu:  
Press **M + -**

**3:** Configure or view the operation mode you have set (Color, Show, DMX, DALI):

Press **M**

**4: Optional:** Do a test run of the connected LEDs:

Press **M + - + +**

Hard or soft lock the configuration:

Press **M + +** for 5 seconds.

Reset for factory defaults:

Press **M + - + +** for 5 seconds.

For more information or to see the driver's various menus, visit [www.eldoled.com](http://www.eldoled.com).

# Wiring Diagram

