



VANISHING SCOPE LED

LED 12VAC



DESIGNED BY GREGORY KAY | ASSEMBLED IN AMERICA | US PATENT PENDING

REV 05.01.20



VR-FJ12

Vanishing Point .5" Opening Plaster-In, Remote Power supply (Order separately)



V2P-FJ12

Vanishing Point 2" Flush Canopy to dry wall, with ELV power supply in J-Box



V2MR-FJ12

Vanishing Point 2" Flush Canopy for Millwork Ceiling, with ELV power supply in J-Box

DESCRIPTION

The Vanishing Scope LED offers four distinct mounting options for Drywall and Millwork, allowing for the most minimal and refined architecture in almost any application. The Scope LED fixture tilts 90° vertically. The Cool-to-the-Touch Rotating Lens enables Adjustment of the Beam Angle from a 20° spot to a 50° flood. Four finishes to choose from. Remote Power Supply option available for easy accessibility and the ability to feed up to 30 fixtures. Patent Pending.

DRYWALL APPLICATIONS (PLASTER-IN)

VR - Remote Power Supply has NO visible canopy line, just the small (1/2") point of connection where the fast jack disappears into the ceiling. You may feed up to 30 Scope LED fixtures with a 12V remote power supply (Order Separately).

V2P - ELV power supply fits within the junction box. The plaster-in and paint plate allows for the slightest outline of the 2.0" round canopy.

MILLWORK APPLICATIONS:

V2MR - Connection point at ceiling 2.0" canopy sits flush in Millwork ceilings for a clean look; remote power option may feed up to thirty 8 watt LED fixtures. Available in satin nickel or bronze.

V2MP - Connection point at ceiling 2.0" canopy sits flush in Millwork ceilings with included ELV power supply that fits inside J-BOX. Available in satin nickel or bronze.

FINISHES



Antique Bronze
BZ



Satin Nickel
SN



White
WH

PHYSICAL

Construction	Machined from Billet Aluminum, perforated Plaster-In plate
Mounting Options	Fast Jack Monopoint Connection (VR / V2P / V2MP / V2MR)
Lens	The cool-to-the-touch rotating lens allows adjustment of the beam angle from 20° spot to 50° flood while the fixture is illumination
Fixture Tilt	90°
Fixture Rotation	360°
Average LED Life	60,000 hrs at normal use
Warranty	5 Years Pro-rated

SCOPE LUMEN PERFORMANCE @3000K

Lumen Flux	360 Lumens
Lumens Per Watt	38
Total Wattage	9.3W
CRI	92+

*See complete TM30 data below

ELECTRICAL

Remote Power VR, V2MR	120-12VAC Remote Power Supply, Class 2 at 60 watts up to 15ft away or UL2108 up to 300 watts with transformer up to 40 ft. away. May use up to 30 Scope fixtures on a 300 watt transformer.
Power in Canopy V2P, V2MP	120-12VAC up to 50-Watts ELV power supply fits within the included J-BOX
Location	Suitable for damp or dry location, interior use only
Approvals	ETL, with 60 watt Transformer
Power Supply	Requires 12VAC-compatible power source (order separately)
Dimming	Dimmable to 1%, percent of flicker <25%. Triac and ELV dimming standard. Compatible with Lutron Diva, Skylark, and Legrand ELV dimmers (Dimmers sold separately).

System	Type	Fixture	Stem Height	Color Temperature	Finish
VR	FJ12	SCO	1	30K	WH

VR	Vanishing Point 0.5" Connector In Drywall, No Outline of Canopy at connection point, Remote Power Supply (sold separately)
V2P	Vanishing Point 2.0", Slight Outline of 2" Flush of White Canopy, With Power Supply Included in J-Box
V2MR	Vanishing Point 2" Mill-work Flush-Mount Canopy, Remote Power Supply (sold separately)
V2MP	Vanishing 2" Mill-work Flush-Mount Canopy, With Power Supply Included in J-Box

FJ12 Fast Jack 12VAC

SCO Scope

1 1 1" (2.5cm)

30K 3000K

BZ Antique Bronze
SN Satin Nickel
WH* White
*White Not Available in Mill-Work

PROJECT	FIXTURE TYPE	DATE
---------	--------------	------



VANISHING SCOPE LED

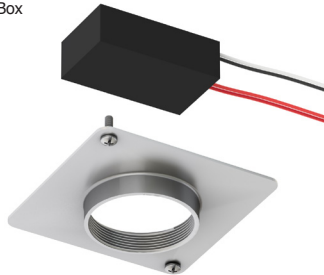
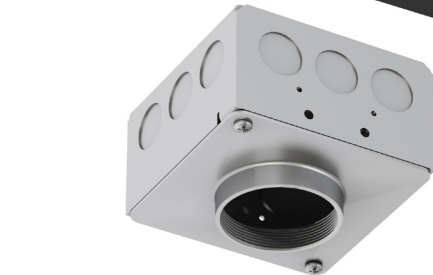
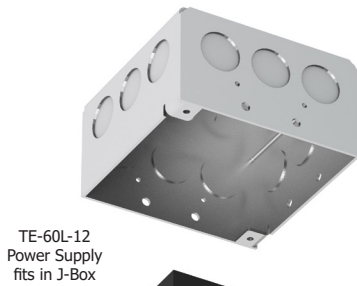
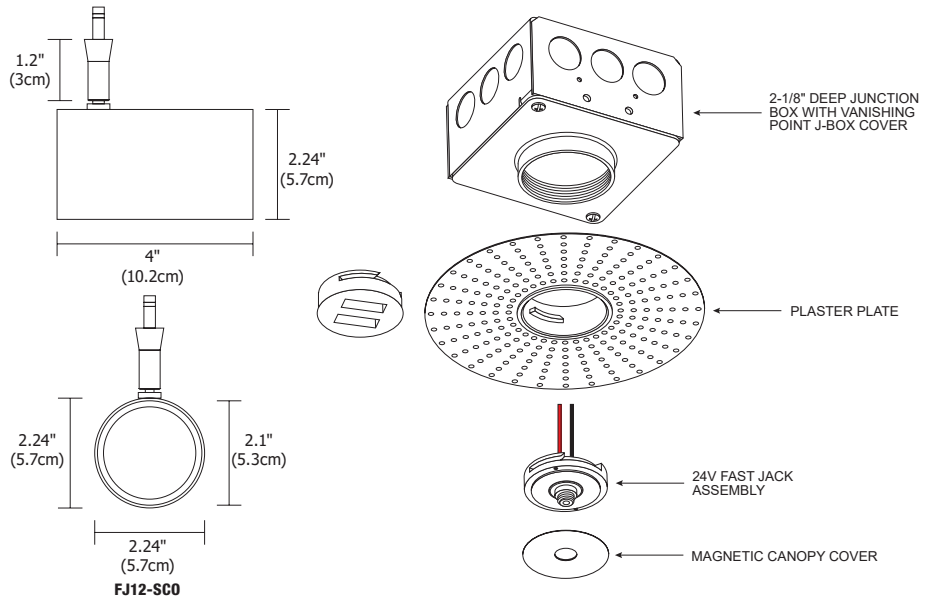
LED 12VAC

V2P, V2MP Power Supply in Canopy (Included):
Class 2, Up to 50W when used in IC, 60W when non-IC. ELV Power Supply

VR, V2MR Remote Power Supply (Sold Separately):
150/300W Magnetic Low Voltage

DIMMING
ELV or Triac

Warranty / Labels:
Prorated 5 year warranty. Assembled in America
ETL (Conforms to UL1598 and CSA 22.2 #250.0)

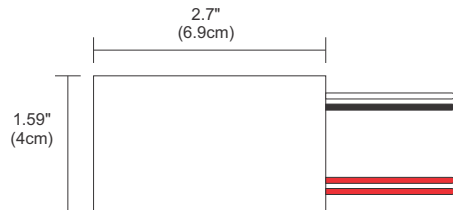
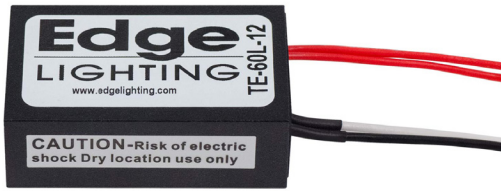


VR-FJ12
Vanishing Point Flush to dry wall, plaster in and paint, with Remote Power (sold separately)

V2P-FJ12
Vanishing Point 2" Flush Canopy to dry wall plaster in and paint, with ELV power supply in J-Box

V2MP-FJ12
Vanishing Point 2" Flush Canopy for Millwork with Power

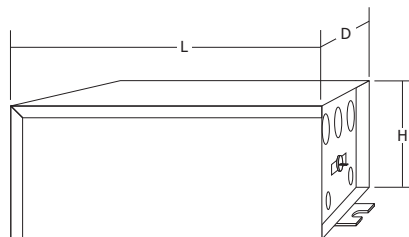
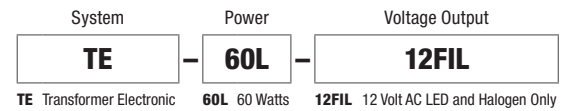
PROJECT	FIXTURE TYPE	DATE
---------	--------------	------



REMOTE 60W 12VAC POWER SUPPLY

TE-60L-12 60 Watt. Up to 50W when used in IC, 60W when non-IC. ELV 12VAC Electronic Transformer converts 120 volt line voltage to 12 volts and features built-in short-circuit protection. The solid, lightweight remote power supply fits inside a standard electrical junction box behind a power feed canopy. Must be in an accessible location or inside an electrical box. Class 2 wiring with no conduit. Must be with in 15ft of lamp, max six 8 watt fixtures.

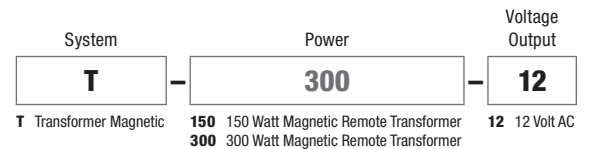
- No load technology, works with LED AC loads
- Isolated output power per NEC and UL safety requirements
- UL recognized/listed Class 2 power supply, meets UL 2108 requirements
- Auto-reset; Short circuit, Overload and Thermal protection
- Soft start
- Dimmable



Dimensions:
8.75"(L) x 4.4"(D) x 3.8"(H)
(22.2cm x 11.2cm x 9.7cm)

**REMOTE MAGNETIC TRANSFORMER
150W AND 300W 12VAC POWER SUPPLY (SOLD SEPARATELY)**

The 150 watt or 300 watt 12 Volt Remote Magnetic Transformer converts 120VAC line voltage into 12VAC low voltage power and are protected by fast-acting circuit breakers. The low voltage output powers the Vanishing Point System up to 300 watts using LED MR16 12V lamps, 9 watts max per connection. Power up to 30 Scope Vanishing Point fixtures using a single power supply at 300 Watts and 9 Watts per Lamp. Dimmable with Magnetic Low Voltage Dimmer sold separately.

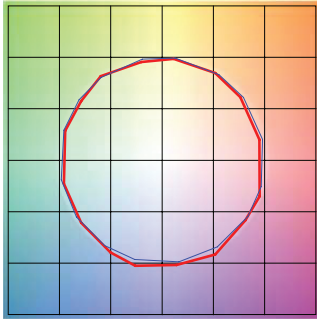


PROJECT	FIXTURE TYPE	DATE
---------	--------------	------

SCOPE LED FAST JACK FIXTURE HEAD TM30 DATA

LED 12VAC

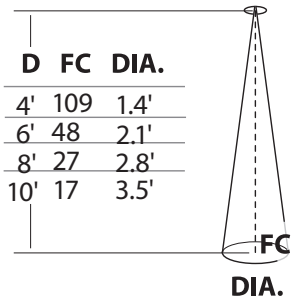
3000K | Rf: 88.1 | Rg: 99.7
Color Vector Graphic



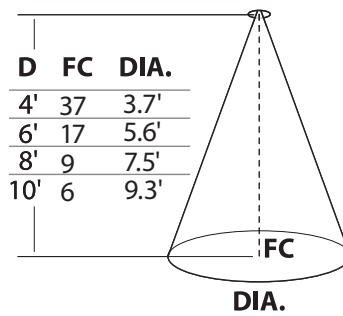
■ Test ■ Reference

HUE BIN	Rf	GRAPHIC SHIFTS %	
		CHROMA	HUE
1	92.5	-3.1%	0.3%
2	93.3	-2.3%	1.9%
3	90.9	-0.8%	3.9%
4	94.3	-1.1%	1.4%
5	92.5	-2.6%	1.5%
6	96.4	1.2%	-0.3%
7	92.6	-2.5%	-0.0%
8	96.9	-1.4%	0.2%
9	92.3	-1.8%	4.3%
10	86.6	-0.7%	7.0%
11	86.5	2.4%	8.2%
12	89.8	5.9%	1.7%
13	93.9	2.6%	-2.7%
14	89.4	5.1%	-5.8%
15	90.1	-0.1%	-4.7%
16	86.5	0.3%	-9.7%

20° Scope



50° Scope



PROJECT	FIXTURE TYPE	DATE
---------	--------------	------