

SCUDO SARACENO / art. G 055 SA / glass

assembly instructions / suspended

LED | 1 x MAX 15W | E26 | 110-120V | 50-60 Hz



ATTENTION: do not use abrasive products to clean this lamp but only a damp cloth.

Our creations may show slight imperfections due to the special handwork required on each piece. Variations are one of the features which make each of our products an original and unique item.

WARNING: the safety is guaranteed only with appropriate use of these instructions, which must be kept for future reference. We recommend the installation by qualified personnel.

GENERAL:

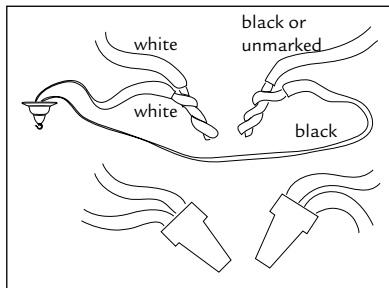
- Read all instructions and review diagrams beginning with the installation of the fixture.
- All electrical connections must be in accordance with local codes, ordinances or national codes. If you are unfamiliar with methods of electrical wiring, secure the services of a qualified licensed electrician.

BEFORE BEGINNING INSTALLATION:

- Turn off the electricity to the outlet box at the circuit breaker or fuse box.
- If you are replacing an existing fixture, remove the old fixture and expose the supply wiring.
- Remove the old cross bar.

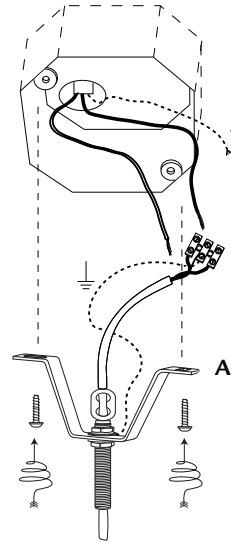
ELECTRICAL CONNECTIONS:

- While supporting the fixture, connect the white wire from the fixture to the white or marked wire of the supply circuit.
- Connect the black fixture to the black supply wire. Connect the ground wire - bare copper wire - to the ground conductor of the supply circuit. Secure with UL listed wire connectors suitable for the size, type and number of wires. Make sure that there are no loose strands of wire and that there are no loose connections.
- Spread the electrical wire connections apart and back into the outlet box.

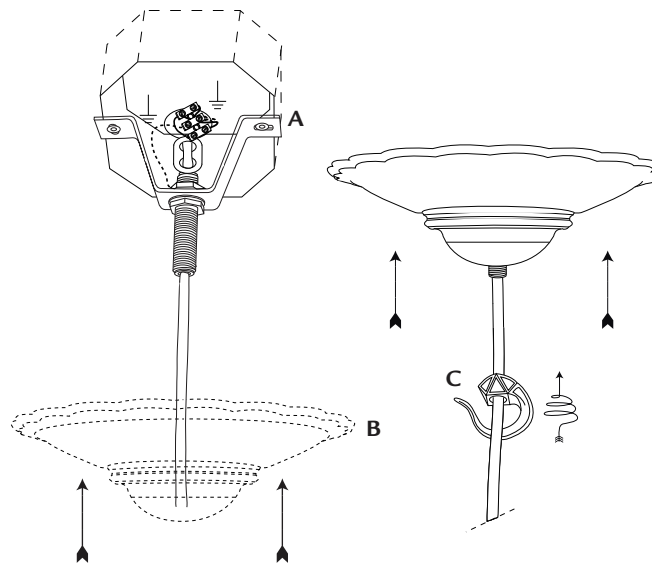


INSTALLING FIXTURE:

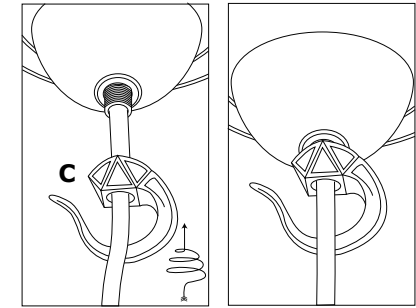
1. Before starting the installation, disconnect the power by turning off the circuit breaker or removing the fuse at the fuse box.
2. Attach the cross bar **A** to the outlet box using the outlet box screws.



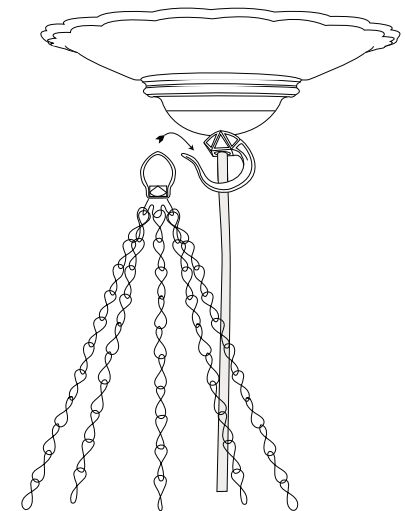
3. Make the electrical connections. Refer to the section titled Electrical Connections.
4. Place the canopy (element **B**) over the nipple.

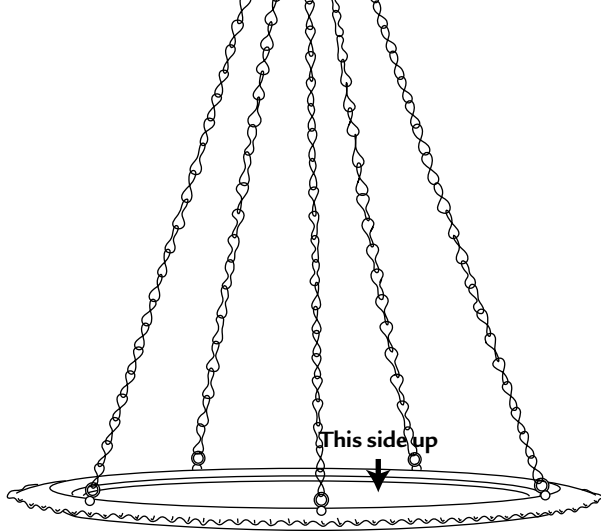


5. Screw the hook **C** onto the nipple and tighten securely.

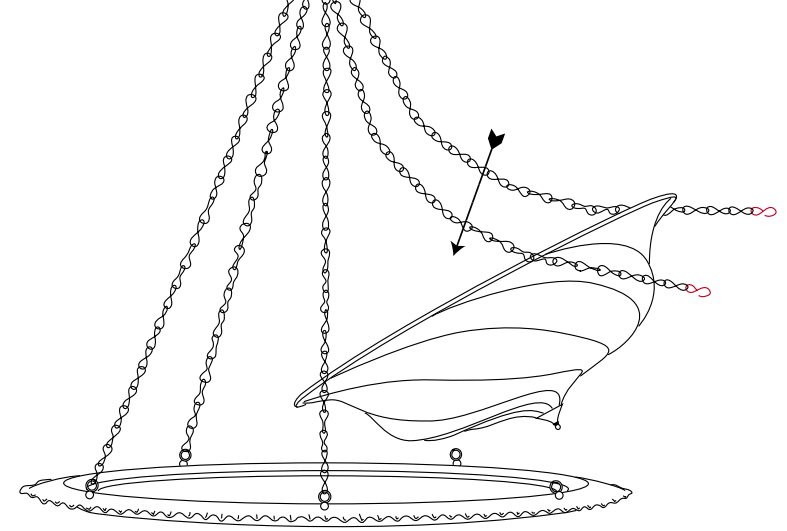


6. Install bulb. Do not exceed the maximum wattage for this fixture. Refer to the wattage warning label attached to the fixture for maximum allowable wattage.
7. You can now hang the metal disk.
8. Restore the electricity and test.



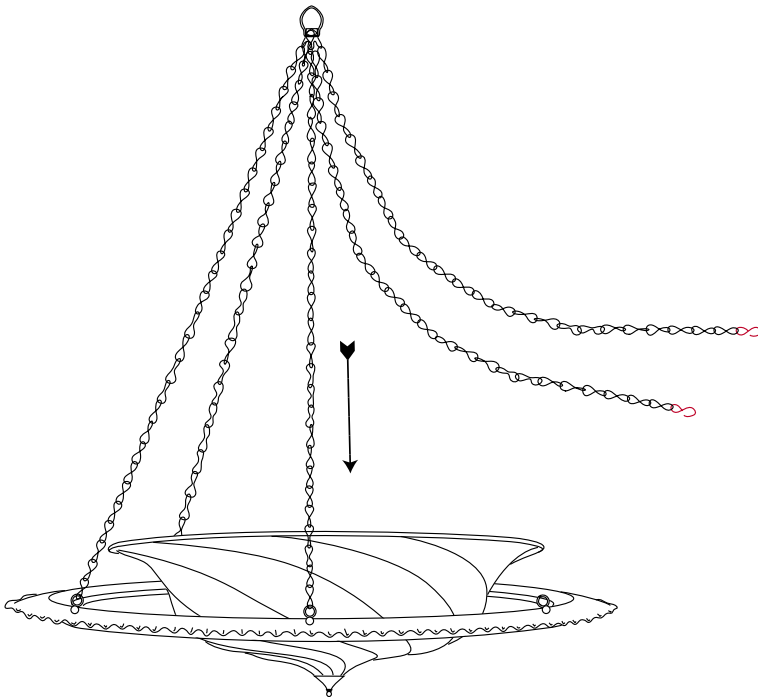


A

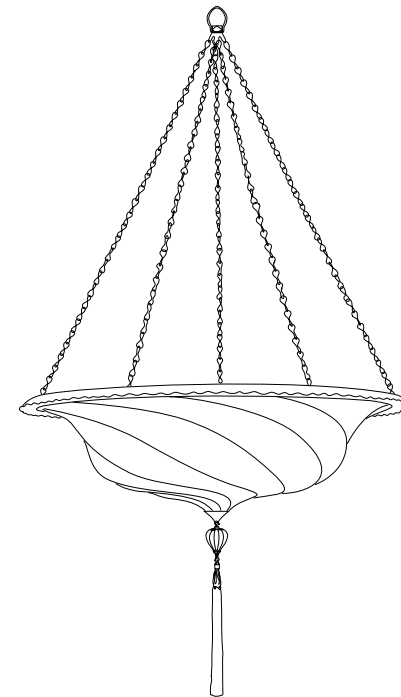


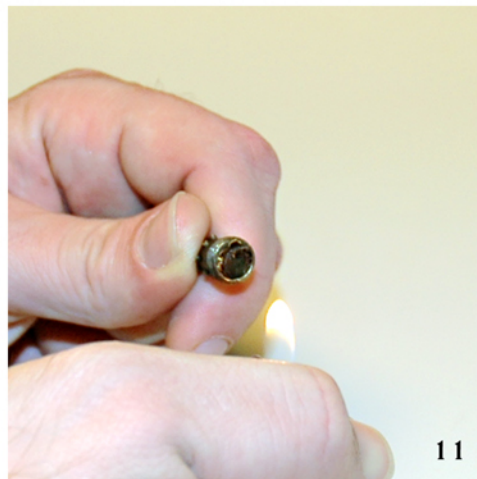
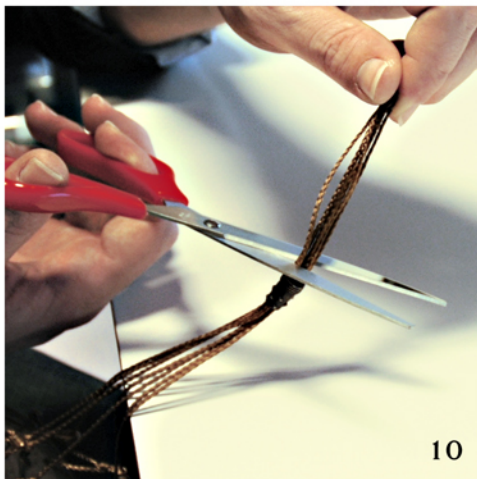
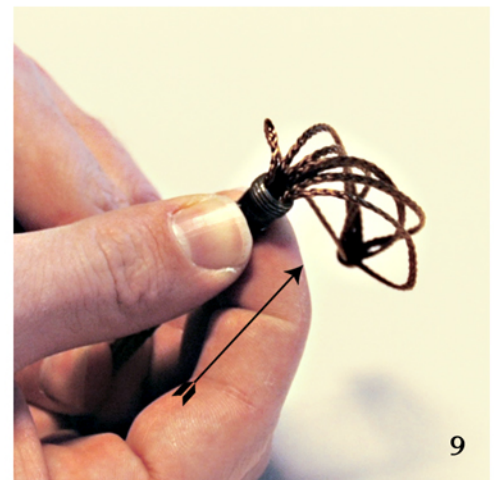
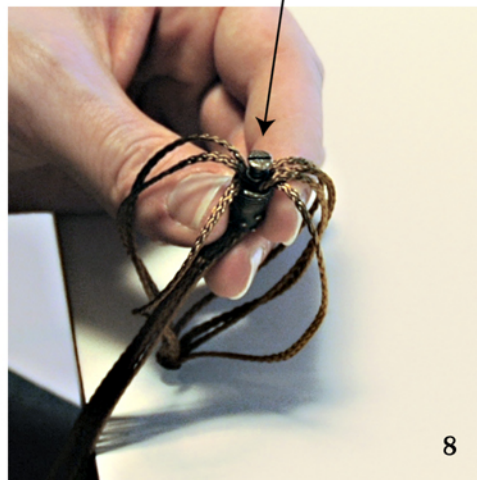
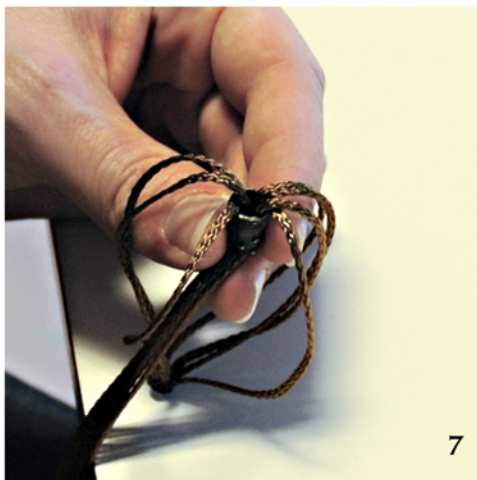
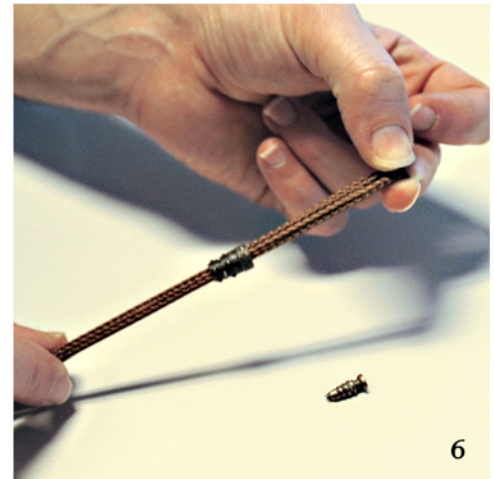
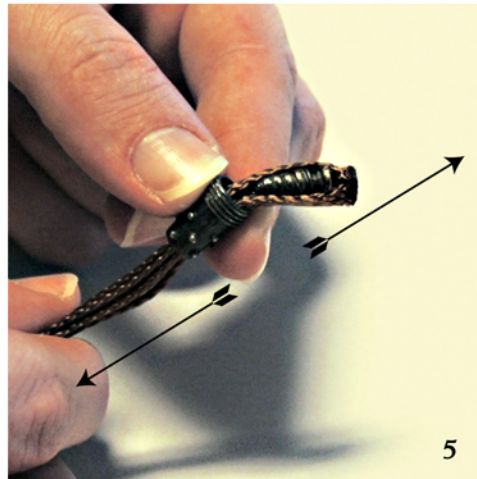
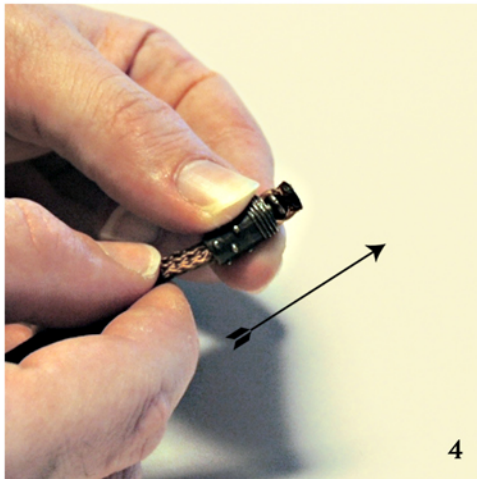
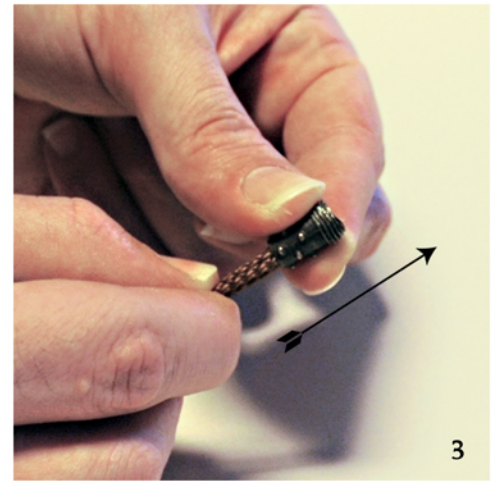
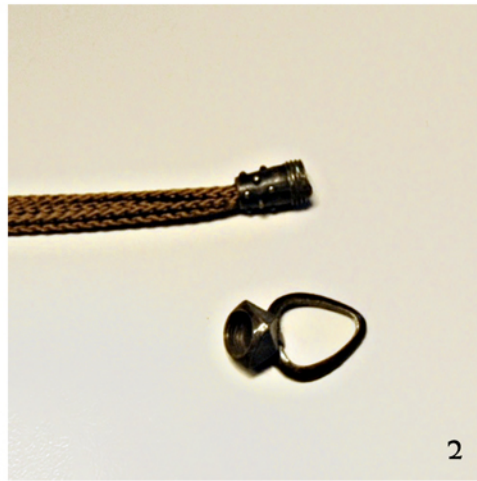
B. Insert the lampshade through the chains as shown in the picture.

C. Delicately push lampshade down until is firmly secured to the frame.



D. Please note: if the length of the chains is minimal you will find the chains dropped from the frame (as shown in the pictures).
After you insert the lamp you must hang up the chains and close the last ring with pliers.





You can unscrew the ring heating with a lighter the brass small threaded cylinder where the ring is screwed. Use pliers, not because it is hard to unscrew but because the brass is going to get quite hot.

STEP 1 – 2 - Unscrew the ring

STEP 3 – 4 - pull the cords up

STEP 5 - remove the screw

STEP 6 - pull down the cord holder to the required height

STEP 7 – 8 - insert the screw among the cords

STEP 9 - push up the cord holder

STEP 10 - cut the exceeding cords a few millimetres over the cords holder

STEP 11 - burn the excess and screw the ring again

That's the way to shorten the cords from up, but you can also shorten the cords from underneath. I explain: hang the lamp to the ceiling attachment. The hanging cords pass through the glass beads that are attached to the rim; right under the glass beads there's a little knot, then a little piece of cord, a flat disc and another knot. Decide how much you have to shorten the hanging cords. Start from one cord: with the aid of someone, hold the edge of the cord in correspondence of the flat disc and pull up the shade from the rim to the height that you need. Make a little knot right under the glass bead which is attached to the shade. Repeat this operation for all the hanging cords. You might need to adjust one or more cords once you have finished this operation in order to keep the lamp balanced and have all the cords in tension. If you want to be sure that the lamp is perfectly balanced, before adjusting the height, take a tape measure and mark with a black spot all the cords at the height that you want to obtain.

Once you have shorten the height, cut the exceeding cords right under the glass beads leaving about 2,5 cm / 1" cord. Insert from underneath the flat discs and make a little knot right under them.

Once you have finished this operation, you should shorten the electrical cord accordingly. The socket should be outside the shade and the light bulb at no less than 10 cm / 4" from the silk.