



IC LED OUTDOOR PERFORMANCE STEP LIGHT

LED IC115LEDHSG, 838LED

Project: _____

Fixture Type: _____

Location: _____

Contact/Phone: _____

IP65 

PRODUCT DESCRIPTION

The Performance LED step light is rated for use in outdoor or indoor wall mount applications including concrete pour, brick masonry or drywall • May be used as LED retrofit kit for existing Juno PL115 outdoor rated step lights installed in application • Recessed housing is IC rated and can be completely covered with insulation • Back housing ships separately from power module trim for rough-in purposes • Designed to provide 50,000 hours of life • 5 year warranty on LED components.

ENVIRONMENTALLY FRIENDLY, ENERGY EFFICIENT

- No harmful ultraviolet or infrared wavelengths
- No lead or mercury

PRODUCT SPECIFICATIONS

Housing Die cast aluminum housing painted white for durability • Gasket for water tight seal in wet locations provides IP65 rating with 838LED trim • Cover plate provided to protect housing interior during rough-in • (2) 1/2" conduit compression fittings provided for wiring • (1) conduit fitting plug included • Two brackets supplied for nailing unit to studs.

Power Module Trim LED light engine and driver mounted directly to trim assembly for ease of wiring and installation into housing after rough-in.

LED Light Engine: LED PCB utilizes 1 watt high lumen output LEDs binned to Energy Star standards • 3000K or 4100K color temperatures available.

LED Driver: Non-dimming driver accommodates input voltage of 120 volts AC at 50/60Hz • Power factor > 0.9 at 120V input • Driver is thermally protected and has integral overload and short circuit protection • Terminal connections provided as standard for easy removal.

Trim: Available in textured white, black, bronze or silver corrosion resistant paint on cast aluminum • Fastens to housing with two allen head screws • Matte textured diffuser supplied with all trims.

Life Rated for 50,000 hours at 70% lumen maintenance.

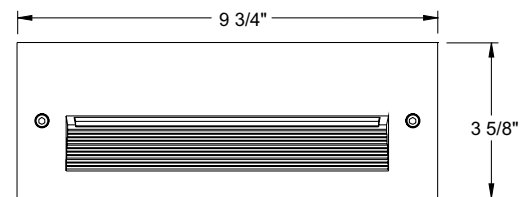
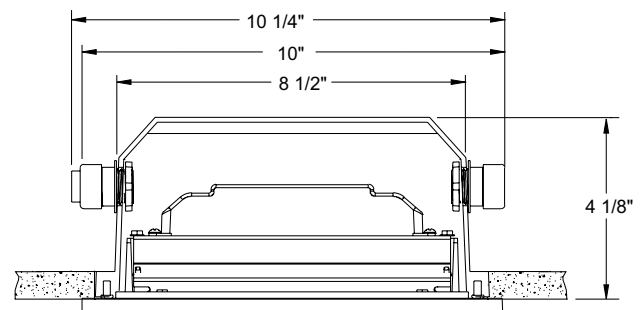
Labels UL listed for wet locations, concrete pour approved • UL and cUL Listed, RoHS compliant • UL Listed as LED conversion retrofit kit for Juno PL115 outdoor rated step light • IP65 rated.

Testing All reports are based on published industry procedures; field performance may differ from laboratory performance.

Product specifications subject to change without notice.



DIMENSIONS



9" X 3" WALL OPENING

ELECTRICAL DATA

Input Voltage	120V
Input Power	13.8W (+/-8%)
Input Current	0.12A
Frequency	50/60Hz
THD	≤ 10%
Minimum starting temp	-20°C (-4°F)

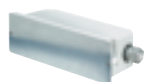
ORDERING INFORMATION: Housing and power module trim each ordered separately. For use as a retrofit, order power module trim only.

Example: **IC115LEDHSG**

Example: **838LED-13-41K-BL**

Back Housing

IC115LEDHSG



Power Module Trim

838LED



Wattage

13 13 Watts

Color Temperature

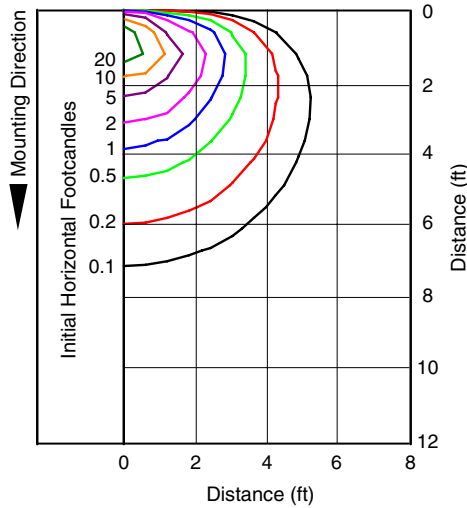
3K 3000K
41K 4100K

Finish

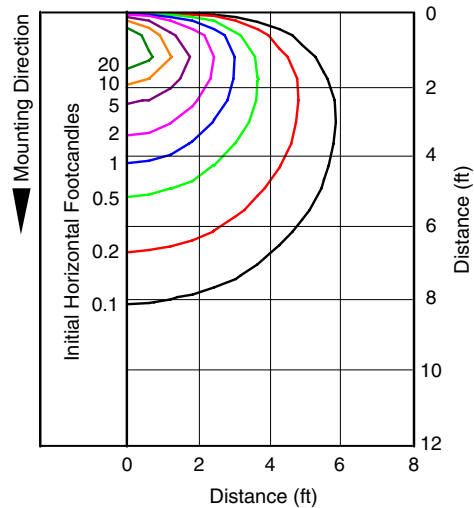
BL Black Textured
BZ Bronze Textured
SR Silver Textured
WH White Textured

IC LED OUTDOOR PERFORMANCE STEP LIGHT LED IC115LEDHSG, 838LED

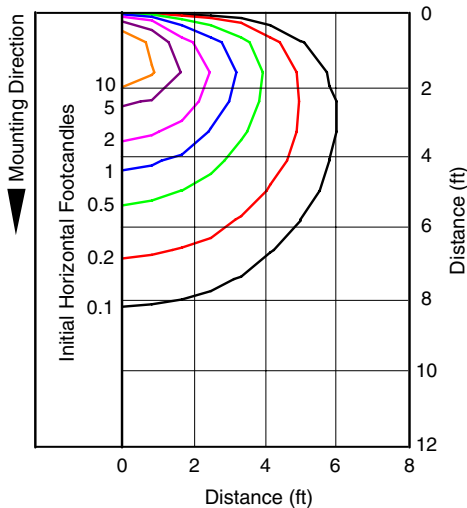
Catalog Number: IC115LEDHSG
838LED-13-41K-BL
Test Number: PT09102902
Total Lumens: 182 lms
Mounting Height: 1.50 ft



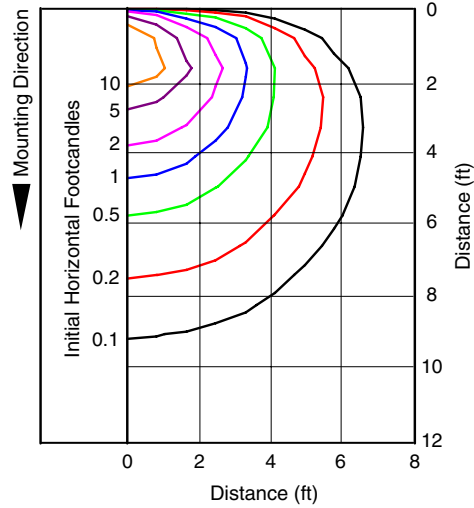
Catalog Number: IC115LEDHSG
838LED-13-41K-WH
Test Number: PT09102901
Total Lumens: 293 lms
Mounting Height: 1.50 ft



Catalog Number: IC115LEDHSG
838LED-13-41K-BL
Test Number: PT09102902
Total Lumens: 182 lms
Mounting Height: 2.00 ft



Catalog Number: IC115LEDHSG
838LED-13-41K-WH
Test Number: PT09102901
Total Lumens: 293 lms
Mounting Height: 2.00 ft



Multiplier: 3K - 0.95

