



TRAC-MASTER®

Avant Garde

FACET® SERIES

T850, T852, T853 and T858

Project: _____

Fixture Type: _____

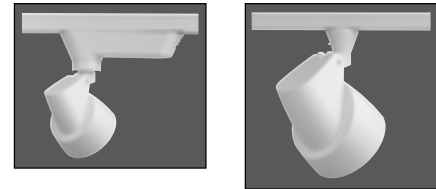
Location: _____

Contact/Phone: _____

PRODUCT DESCRIPTION

Facet's sweeping lines, arresting angles, and a brilliant lack of symmetry result in a totally unexpected design. Its socket housing morphs into a stem that is uniquely horizontal in nature. Concealed wiring and sleek trac adapter complete the ultra-clean appearance. Facet's sculpted form is as much a work of art as it is a trac fixture. The integral bayonet mount accessory holder in the MR16 version, and the optional bayonet mount accessory holder in the PAR30 version, accept up to two accessories simultaneously.

Facet uses high-quality, die-cast aluminum construction and is available in attractive white, black and silver finishes.



Low Voltage MR16

Construction Die cast aluminum housing.

Lamp 12V, 50W maximum MR16 GU5.3/GX5.3 bi-pin.

Socket Ceramic bi-pin.

Accessory Holder Integral to fixture design • Die cast aluminum construction • Precision bayonet mounting • Accommodates up to two accessories simultaneously • Clear glass lens included with fixture.

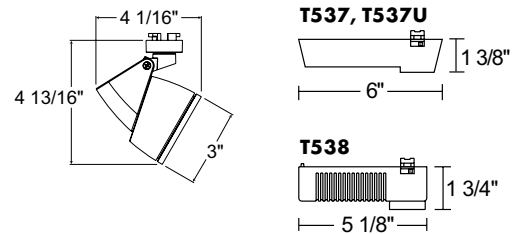
Transformer Must be ordered separately • Compatible with T537 or T538 12V electronic transformer for halogen lamps (D1.2.1) • Compatible with T537U universal 12V electronic transformer for LED or halogen lamps (D1.2.5) • Compatible with T539 12V electronic transformer for halogen lamps (D1.2.0) • Compatible with T542 or T543 12V magnetic transformer for LED or halogen lamps (D1.2.0).

Aiming 360° horizontal rotation • 90° vertical aiming capability.

Labels UL and C-UL Listed.

Product specifications subject to change without notice.

Catalog Number	Finish	Lamp
T850WH	White	50W MR16 max.
T850BL	Black	50W MR16 max.
T850SL	Silver	50W MR16 max.



ACCESSORIES

Cat. No.	Description	Cat. No.	Description	Cat. No.	Description
T741-6	Color Filters	T7477	Prismatic Spread Lens	T7478	Linear Spread Lens
T7401-18	Dichroic Filters	T7420	Diffusion Lens	T7421	Uniformity Lens
T7422	UV Filter	T7459BL	Hexcell Louver		

See specification sheet D1.2.2 for details.

Line Voltage PAR20

Construction Die cast aluminum housing.

Lamp 120V, 50W maximum PAR20 medium base.

Socket Medium base porcelain with nickel plated copper screw shell.

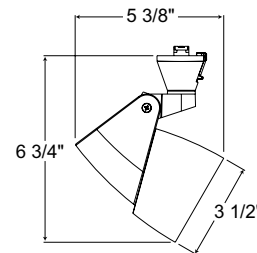
Adapter Unique, attractive conical-elliptical shaped trac adapter • Copper alloy contacts provide precise spring action – no arcing and will not take a set • True, positive electrical ground • Spring-loaded positive latch with embossed polarity arrow secures trac light to trac • “Pull-up” contact to up position for two-circuit application • Polarity indicator embossed on copper contact.

Aiming 360° horizontal rotation • 90° vertical aiming capability.

Labels UL and C-UL Listed.

Product specifications subject to change without notice.

Catalog Number	Finish	Lamp
T852WH	White	50W PAR20 max.
T852BL	Black	50W PAR20 max.
T852SL	Silver	50W PAR20 max.



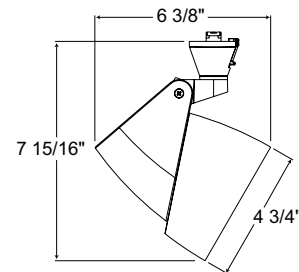
TRAC-MASTER®

Avant Garde

FACET® SERIES**T850, T852, T853 and T858****Line Voltage PAR30****Construction** Die cast aluminum housing.**Lamp** 120V, 75W maximum PAR30 medium base.**Socket** Medium base porcelain with nickel plated copper screw shell.**Adapter** Unique, attractive conical-elliptical shaped trac adpter • Copper alloy contacts provide precise spring action – no arcing and will not take a set • True, positive electrical ground • Spring-loaded positive latch with embossed polarity arrow secures trac light to trac • “Pull-up” contact to up position for two-circuit application • Polarity indicator embossed on copper contact.**Accessory Holder** Must be ordered separately • Die cast aluminum construction • Precision bayonet mounting • Accommodates up to two accessories simultaneously.**Aiming** 360° horizontal rotation • 90° vertical aiming capability.**Labels** UL and C-UL Listed.

Product specifications subject to change without notice.

Catalog Number	Finish	Lamp
T853WH	White	75W PAR30 max.
T853BL	Black	75W PAR30 max.
T853SL	Silver	75W PAR30 max.

**ACCESSORIES**

Cat. No.	Description	Cat. No.	Description
T853MC	Dual Accessory Holder (Specify Finish)	T5678	Linear Spread Lens
T561-6	Color Filters	T5621	Uniformity Lens
T569BL	Cube Cell Louver	T5622	UV Filter
T5677	Prismatic Spread Lens	T5618	Color Correction Filter, 2700K

See specification sheet [D1.2.2](#) for details.**Line Voltage PAR38****Construction** Die cast aluminum housing.**Lamp** 120V, 150W maximum PAR38 medium base.**Socket** Medium base porcelain with nickel plated copper screw shell.**Adapter** Unique, attractive conical-elliptical shaped trac adpter • Copper alloy contacts provide precise spring action – no arcing and will not take a set • True, positive electrical ground • Spring-loaded positive latch with embossed polarity arrow secures trac light to trac • “Pull-up” contact to up position for two-circuit application • Polarity indicator embossed on copper contact.**Aiming** 360° horizontal rotation • 90° vertical aiming capability.**Labels** UL and C-UL Listed.

Product specifications subject to change without notice.

Catalog Number	Finish	Lamp
T858WH	White	150W PAR38 max.
T858BL	Black	150W PAR38 max.
T858SL	Silver	150W PAR38 max.

