



# TRAC-MASTER®

Low Voltage

## INTEGRAL MAGNETIC TRANSFORMER

T340, T338 and T350

Project: \_\_\_\_\_

Fixture Type: \_\_\_\_\_

Location: \_\_\_\_\_

Contact/Phone: \_\_\_\_\_

### PRODUCT DESCRIPTION

Low Voltage fixtures offer precise control and energy efficiency for accent lighting and display applications.

**Construction** Drawn steel housing with die-formed steel yoke.

**Socket** Ceramic bi-pin with integral heat shield.

**Aiming** 90° vertical aiming capability and 358° rotation • One locking knob provided.

**Transformer** Integral 12V 50VA magnetic transformer.

**Adapter** Copper alloy contacts provide precise spring action - no arcing and will not take a set • True, positive electrical ground • On/off switch included • Patented embossed polarity arrows on bottom of adapter • Spring-loaded positive latch with embossed polarity arrows secures trac light to trac • "Pull-up" contact to up position for two-circuit application.

**Labels** UL listed, CSA certified.

Product specifications subject to change without notice.



### Low Voltage MR16

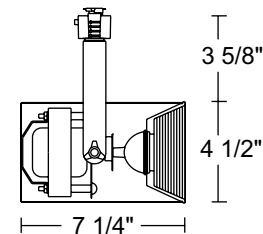
Catalog Number	Description	Finish	Baffle	Lamp
T340WH	Cylinder	White	Black	50W MR16 max.
T340BL	Cylinder	Black	Black	50W MR16 max.

#### ACCESSORIES

Cat. No.	Description	Cat. No.	Description	Cat. No.	Description
T72BL	Black Barn Doors	T570BL	Black Accessory Holder	T571-6	Color Filters
T5777	Prismatic Spread Lens	T5778	Linear Spread Lens	T5721	Uniformity Lens
T5722	UV Filter	T5718	Dichroic Lens	T579BL	Cube Cell Louver
T557	Prismatic Spread Lens	T559	Linear Spread Lens	T5501-18	Dichroic Filters
T551-5	Color Filters	T5520	Diffusion Lens	T5521	Uniformity Lens
T5522	UV Filter	T5559BL	Hexcell Louver		

See specification sheet [D1.2.2](#) for details.

T340 can accept one 1 3/4" filter, lens or louver in place of clear glass supplied with MR16 fixtures; in addition, can also accept one 4 11/16" filter, lens or louver when combined with accessory holder or barn doors.



### Low Voltage MR16

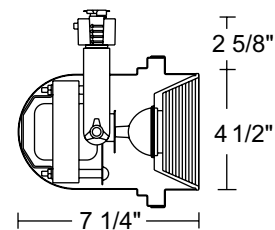
Catalog Number	Description	Finish	Baffle	Lamp
T338WH	Studio I	White	Black	50W MR16 max.

#### ACCESSORIES

Cat. No.	Description	Cat. No.	Description	Cat. No.	Description
T72BL	Black Barn Doors	T570BL	Black Accessory Holder	T571-6	Color Filters
T5777	Prismatic Spread Lens	T5778	Linear Spread Lens	T5721	Uniformity Lens
T5722	UV Filter	T5718	Dichroic Lens	T579BL	Cube Cell Louver
T557	Prismatic Spread Lens	T559	Linear Spread Lens	T5501-18	Dichroic Filters
T551-5	Color Filters	T5520	Diffusion Lens	T5521	Uniformity Lens
T5522	UV Filter	T5559BL	Hexcell Louver		

See specification sheet [D1.2.2](#) for details.

T338 can accept one 1 3/4" filter, lens or louver in place of clear glass supplied with MR16 fixtures; in addition, can also accept one 4 11/16" filter, lens or louver when combined with accessory holder or barn doors.



# TRAC-MASTER®

Low Voltage

## INTEGRAL MAGNETIC TRANSFORMER

### T340, T338 and T350

#### Low Voltage MR16

Catalog Number	Description	Finish	Baffle	Lamp
T350WH	Cast Rectangle	White	Black	75W MR16 max.
T350BL	Cast Rectangle	Black	Black	75W MR16 max.

#### ACCESSORIES

Cat. No.	Description	Cat. No.	Description	Cat. No.	Description
T557	Prismatic Spread Lens	T559	Linear Spread Lens	T5501-18	Dichroic Filters
T551-5	Color Filters	T5520	Diffusion Lens	T5521	Uniformity Lens
T5522	UV Filter	T5559BL	Hexcell Louver		

See specification sheet [D1.2.2](#) for details.

