



# TRAC-MASTER®

Avant Garde

**CAST 16®**

**T350 and T447**

Project: \_\_\_\_\_

Fixture Type: \_\_\_\_\_

Location: \_\_\_\_\_

Contact/Phone: \_\_\_\_\_

## PRODUCT DESCRIPTION

The Cast 16 Series has a distinctive rectangular or cube design with subtle, rounded corners and integral miniature black baffles. These trac lights produce a controlled optical beam that is ideal for pin spotting and other display lighting applications.

**Lamp** 12V, 75W maximum MR16 GU5.3/GX5.3 bi-pin.

**Socket** Ceramic bi-pin with integral heat shield.

**Construction** Cast aluminum housing.

**Adapter** Copper alloy contacts provide precise spring action - no arcing and will not take a set • True, positive electrical ground • On/off switch included • Patented embossed polarity arrows on bottom of adapter • Spring-loaded positive latch with embossed polarity arrows secures trac light to trac • "Pull-up" contact to up position for two-circuit application.

**Labels** UL listed, CSA certified.

Product specifications subject to change without notice.



## Low Voltage MR16

**Transformer** 12V 50W PAR20 max. integral magnetic.

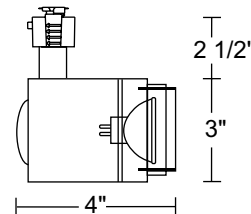
**Aiming** 90° vertical aiming capability and 321° rotation.

Catalog Number	Style	Finish	Baffle	Lamp
<b>T350WH</b>	Cast Rectangle	White	Black	75W MR16 max.
<b>T350BL</b>	Cast Rectangle	Black	Black	75W MR16 max.

### ACCESSORIES

Cat. No.	Description	Cat. No.	Description	Cat. No.	Description
<b>T551-5</b>	Color Filters	<b>T557</b>	Prismatic Spread Lens	<b>T559</b>	Linear Spread Lens
<b>T5501-18</b>	Dichroic Lenses	<b>T5520</b>	Diffuse Spread Lens	<b>T5521</b>	Uniformity Lens
<b>T5522</b>	UV Filter Lens	<b>T5559BL</b>	Hexcell Louver		

See specification sheet [D1.2.2](#) for details.



## Low Voltage MR16

**Transformer** Must be ordered separately • Compatible with T537 or T538 12V electronic transformer for halogen lamps ([D1.2.1](#)) • Compatible with T537U universal 12V electronic transformer for LED or halogen lamps ([D1.2.5](#)) • Compatible with T539 12V electronic transformer for halogen lamps ([D1.2.0](#)) • Compatible with T542 or T543 12V magnetic transformer for LED or halogen lamps ([D1.2.0](#)).

**Aiming** 90° vertical aiming capability and 306° rotation.

Catalog Number	Style	Finish	Baffle	Lamp
<b>T447WH</b>	Cast Cube	White	Black	75W MR16 max.
<b>T447BL</b>	Cast Cube	Black	Black	75W MR16 max.

### ACCESSORIES

Cat. No.	Description	Cat. No.	Description	Cat. No.	Description
<b>T551-5</b>	Color Filters	<b>T557</b>	Prismatic Spread Lens	<b>T559</b>	Linear Spread Lens
<b>T5501-18</b>	Dichroic Lenses	<b>T5520</b>	Diffuse Spread Lens	<b>T5521</b>	Uniformity Lens
<b>T5522</b>	UV Filter Lens	<b>T5559BL</b>	Hexcell Louver		

See specification sheet [D1.2.2](#) for details.

