



TRAC-MASTER®

Classics

STUDIO I

T393, T395 and T397

Project: _____

Fixture Type: _____

Location: _____

Contact/Phone: _____

PRODUCT DESCRIPTION

The Studio I in white with black phenolic baffles and striking details will enhance any traditional environment.

Construction Drawn steel housing with steel yoke.

Aiming 90° vertical aiming capability and 358° rotation • One locking knob provided.

Adapter Copper alloy contacts provide precise spring action - no arcing and will not take a set • True, positive electrical ground • On/off switch included

- Patented embossed polarity arrows on bottom of adapter
- Spring-loaded positive latch with embossed polarity arrows secures trac light to trac
- "Pull-up" contact to up position for two-circuit application.

Labels UL listed, CSA certified.

Product specifications subject to change without notice.



Line Voltage R20

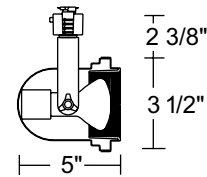
Catalog Number	Finish	Lamp
T393WH	White	30-50W R20/35-50W PAR20

ACCESSORIES

Cat. No.	Description	Cat. No.	Description	Cat. No.	Description
T71BL	Black Barn Doors†	T560BL	Black Accessory Holder	T561-6	Color Filters
T569BL	Cube Cell Louver	T5677	Prismatic Spread Lens	T5678	Linear Spread Lens
T5621	Uniformity Lens	T5622	UV Filter	T5618	Color Correction Filter

See specification sheet [D1.2.2](#) for details.

† Barn Doors accept Color Filters, Lenses and Louvers.



Line Voltage BR30/PAR30L

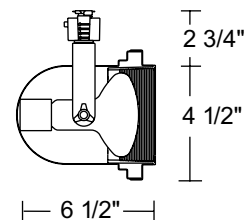
Catalog Number	Finish	Lamp
T395WH	White	60-75W BR30/50-75W PAR30L

ACCESSORIES

Cat. No.	Description	Cat. No.	Description	Cat. No.	Description
T72BL	Black Barn Doors†	T570BL	Black Accessory Holder	T571-6	Color Filters
T579BL	Cube Cell Louver	T5777	Prismatic Spread Lens	T5778	Linear Spread Lens
T5721	Uniformity Lens	T5722	UV Filter	T5718	Color Correction Filter

See specification sheet [D1.2.2](#) for details.

† Barn Doors accept Color Filters, Lenses and Louvers.



Line Voltage BR40/PAR38

Catalog Number	Finish	Lamp
T397WH	White	45-150W PAR38 or 65-120W BR40

ACCESSORIES

Cat. No.	Description	Cat. No.	Description	Cat. No.	Description
T73BL	Black Barn Doors†	T73WH	White Barn Doors†	T580BL	Black Accessory Holder
T581-6	Color Filters	T589BL	Cube Cell Louver		

See specification sheet [D1.2.2](#) for details.

† Barn Doors accept Color Filters, Lenses and Louvers.

