



# TRAC-LITES

Project: \_\_\_\_\_

## 120V PAR16/MR16 GU10 SERIES

Fixture Type: \_\_\_\_\_

**R711, R712, R713, R714, R715**

Location: \_\_\_\_\_

**R716, R717 and R718**

Contact/Phone: \_\_\_\_\_

### PRODUCT DESCRIPTION

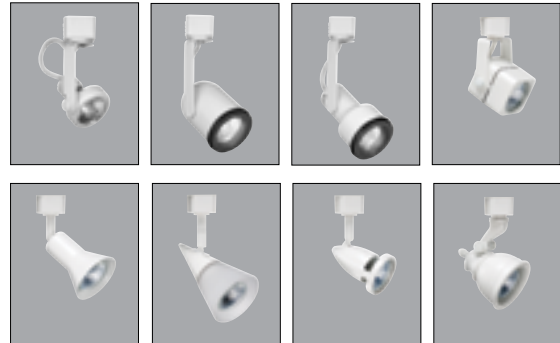
**Lampholder** Ceramic base twist-and-lock GU10 socket with nickel plated contacts.

**Aiming** 90° vertical aiming capability and 358° rotation.

**Adapter** Copper alloy contacts provide precise spring action • True, positive electrical ground • On/off switch included • Patented embossed polarity arrows on bottom of adapter • Spring-loaded locking latch with embossed polarity arrows secures trac light to trac • Compatible with both Trac-Lites and Trac-Master trac • "Pull-up" contact to up position for use on Trac-Master two-circuit trac.

**Labels** UL/CUL listed.

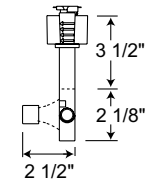
Product specifications subject to change without notice.



### Line Voltage GU10 Open Back Spotlight

**Construction** Drawn steel housing with die-formed steel yoke.

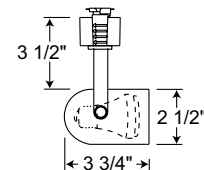
Catalog Number	Finish	Lamp
R711WH	White	120V, 35-50W PAR16/MR16 GU10
R711BL	Black	120V, 35-50W PAR16/MR16 GU10



### Line Voltage GU10 Round Back Cylinder

**Construction** Drawn steel housing with die-formed steel yoke.

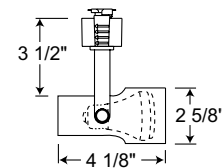
Catalog Number	Finish	Lamp
R712WH	White with Black Bezel	120V, 35-50W PAR16/MR16 GU10
R712BL	Black with Black Bezel	120V, 35-50W PAR16/MR16 GU10



### Line Voltage GU10 Step Cylinder

**Construction** Drawn steel housing with die-formed steel yoke.

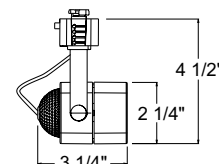
Catalog Number	Finish	Lamp
R713WH	White with Black Bezel	120V, 35-50W PAR16/MR16 GU10
R713BL	Black with Black Bezel	120V, 35-50W PAR16/MR16 GU10



### Line Voltage GU10 Cast Cube

**Construction** Drawn steel housing with die-formed steel yoke.

Catalog Number	Finish	Lamp
R714WH	White	120V, 35-50W PAR16/MR16 GU10
R714BL	Black	120V, 35-50W PAR16/MR16 GU10
R714SC	Satin Chrome	120V, 35-50W PAR16/MR16 GU10
R714BZ	Painted Bronze	120V, 35-50W PAR16/MR16 GU10



# TRAC-LITES

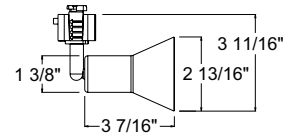
## 120V PAR16/MR16 GU10 SERIES

R711, R712, R713, R714, R715  
R716, R717 and R718

### Line Voltage GU10 Flare

**Construction** Drawn steel housing with machined steel stem.

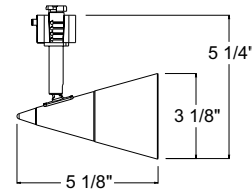
Catalog Number	Finish	Lamp
R715WH	White	120V, 35-50W PAR16/MR16 GU10
R715BL	Black	120V, 35-50W PAR16/MR16 GU10
R715SC	Satin Chrome	120V, 35-50W PAR16/MR16 GU10
R715BZ	Painted Bronze	120V, 35-50W PAR16/MR16 GU10



### Line Voltage GU10 Glass Cone

**Construction** Machined aluminum rear housing with machined steel stem  
• Semi-opaque conical front glass accent in complementary colors.

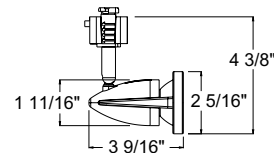
Catalog Number	Housing Finish	Glass Color	Lamp
R716WH	White	Opal Frost	120V, 35-50W PAR16/MR16 GU10
R716BL	Black	Opal Frost	120V, 35-50W PAR16/MR16 GU10
R716SC	Satin Chrome	Opal Frost	120V, 35-50W PAR16/MR16 GU10
R716BZ	Painted Bronze	Amber Frost	120V, 35-50W PAR16/MR16 GU10



### Line Voltage GU10 Odyssey

**Construction** Die cast aluminum housing with machined steel stem.

Catalog Number	Finish	Lamp
R717WH	White	120V, 35-50W PAR16/MR16 GU10
R717BL	Black	120V, 35-50W PAR16/MR16 GU10
R717SC	Satin Chrome	120V, 35-50W PAR16/MR16 GU10
R717BZ	Painted Bronze	120V, 35-50W PAR16/MR16 GU10



### Line Voltage GU10 Bell

**Construction** Die cast aluminum housing and swivel arm • Deep lamp regression and spun aluminum step baffle to reduce glare.

Catalog Number	Finish	Lamp
R718WH	White	120V, 35-50W PAR16/MR16 GU10
R718BL	Black	120V, 35-50W PAR16/MR16 GU10
R718SC	Satin Chrome	120V, 35-50W PAR16/MR16 GU10
R718BZ	Painted Bronze	120V, 35-50W PAR16/MR16 GU10

