



# Torsion

MODERN FAN COMPANY  
Customer Service  
M-F 8am - 4pm (PST)

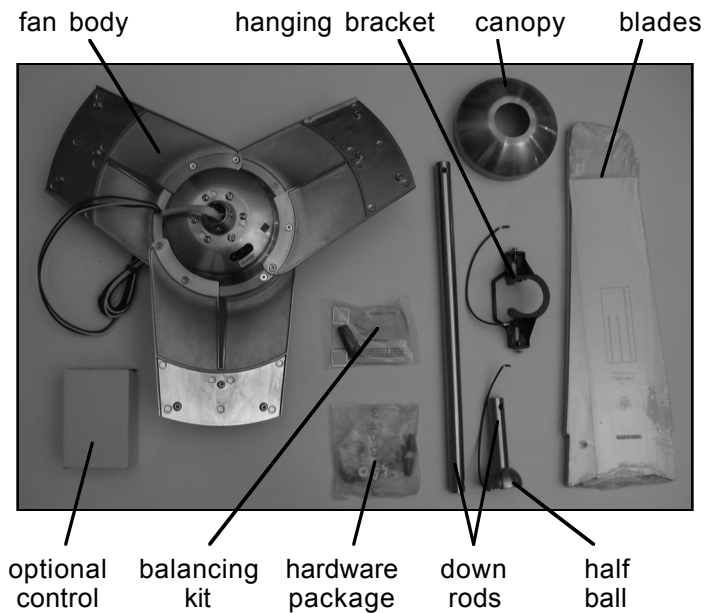
(ph) 888.588.3267  
www.modernfan.com

## Torsion Fan- Installation instructions

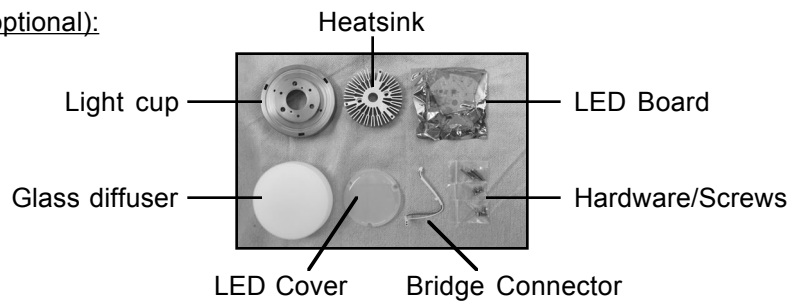
Should you have any questions or difficulty installing your new fan, please contact Modern Fan Co. customer service immediately.

**Note:** Power supply must be turned off prior to any contact with electrical wires. It is recommended that a licensed electrician be hired to install your ceiling fan.

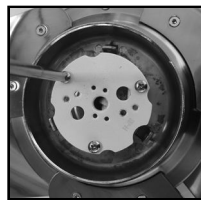
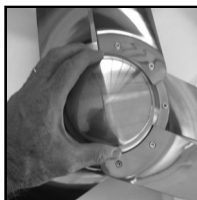
(1) Remove and identify contents of carton.



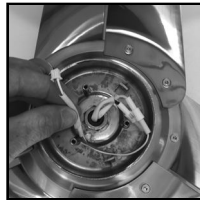
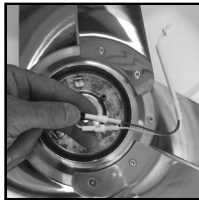
LED Light Kit Parts (optional):



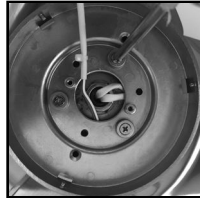
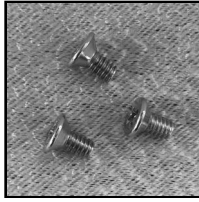
(2) If installing optional #271 LED Light Kit, carefully place the fan on the packing foam (bottom side up) and follow the steps below. Otherwise, proceed to next step.



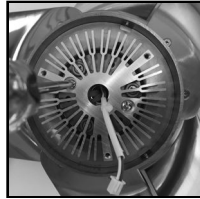
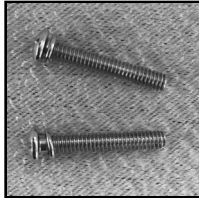
Remove bottom cap (rotate to unthread) and remove white plate held by three screws shown here.



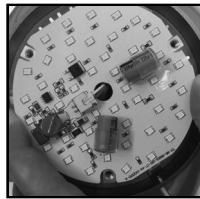
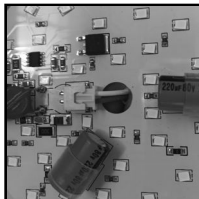
Join ends of bridge connector wires with wire leads from fan. Position wires so that connectors are flat and to side of three posts inside connection cavity.



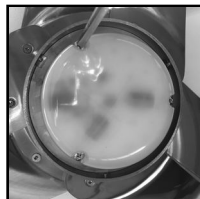
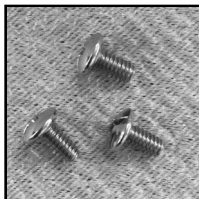
Place light cup over wire connectors so that the three posts are seated in holes on back of light cup and two pin connector passes through center hole. Use three countersink screws to fasten light cup in place.



Route bridge connector through center of heatsink and place heatsink inside light cup so that fastening holes are aligned over two fastening posts. Using the long panhead screws, secure heatsink in place with screw heads recessed into milled side of heatsink.



Feed bridge connector through center hole of LED board and carefully insert into two pin connector. Gently push excess wire back into light cup and place LED board flat on heatsink with cutouts positioned over holes on heatsink.



Align LED cover with fastening holes positioned over cutouts in LED board and screw holes in heatsink. Use short panhead screws to secure LED cover and LED board in place on heatsink.

**(3)** Carefully place fan facing down on packing foam (avoid damage to light if installed). Using blade screws and washers from hardware package, secure each of three blades to rotor arms.



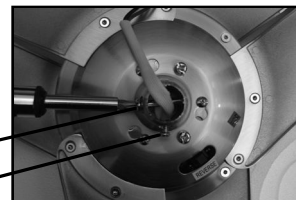
**(4)** Remove stopper pin and half ball from small down rod by loosening set screw on half ball. Set parts aside for reinstallation in step **(8)**.

stopper pin  
set screw



**(5)** Remove the stopper screw and loosen the set screw on the fan collar. Set the stopper screw aside for step **(6)**.

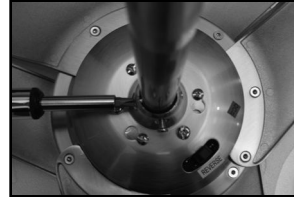
stopper screw  
set screw



---

(6) Run fan wires through selected down rod. Reinstall stopper screw from step (4) and firmly tighten set screw on fan collar against down rod.

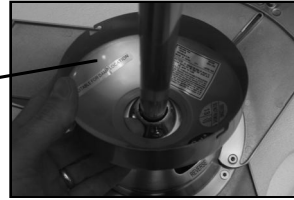
**Note:** If ceiling height allows, using a longer down rod will increase airflow and efficiency.



---

(7) Slide fan canopy over down rod and carefully rest on top of fan body.

canopy

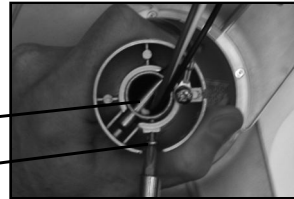


---

(8) Reinstall half ball from step (4) on end of down rod. Be sure that stopper pin is inserted through down rod and seated in half ball. Tighten set screw against down rod.

stopper pin

set screw



---

(9) Using machine screws from hardware package or existing screws in junction box, securely attach hanging bracket to ceiling junction box.



---

(10) Lift fan to ceiling and set half ball in the hanging bracket so that the ridge on the edge of the hanging bracket is seated in the slotted channel in the half ball.

channel and ridge



---

(11) With fan safely suspended by bracket, make wire connections with wire nuts included in hardware package as described in the **Control Installation Instructions**. If using optional #003, #004 or #005 controls, the receiving unit should be placed inside the arms of the hanging bracket and connected at this time. Install optional wall control as described in the control installation instructions (not applicable if using a handheld remote only).

---

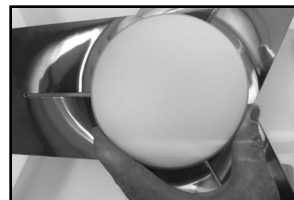
(12) Remove set screws on the sides of the hanging bracket. Lift canopy to ceiling and align slots on sides with set screw holes on hanging bracket. Re-install and tighten set screws to hold canopy in place.

set screw



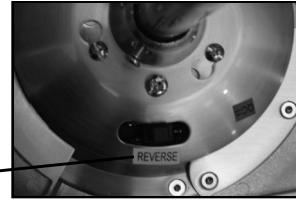
---

(13) If optional LED is installed, position glass diffuser inside light cup and rotate until secure.



---

**(14)** Your fan is reversible for summer and winter operation. The reverse switch is located on the top of the fan body. When reading the REVERSE label, the LEFT position is for summer and the RIGHT position is for winter.



reverse switch

---

**(15)** The motor and blade arm assembly of your fan have been dynamically balanced prior to shipment. In addition, the blades have been matched to the nearest gram to ensure a well balanced ceiling fan. Furthermore, a blade balancing kit has been included with your fan. Please refer to the instructions packaged with the balancing kit should your fan require additional balancing.

---



709 Washington Street • Ashland, OR 97520 • (tel) 888.588.3267 • (e) [info@modernfan.com](mailto:info@modernfan.com)

[www.modernfan.com](http://www.modernfan.com)