

ControlIT™: Lighting Control  
Setup Manual for PRISM™  
Smart LED RGBW Retrofit  
Downlight



Manual for iPhone and iPad Users (System Requirements: iOS 8.0+)

**NORA** | *NSPEC*  
LIGHTING®

# **NORA** *NSPEC*

## LIGHTING®

### TABLE OF CONTENTS

<b>1. Overview</b>	<b><u>2</u></b>
<b>2. Getting Started</b>	<b><u>3</u></b>
2.1 Download the ControlLIT: Lighting Control App	
2.2 Creating a Username and Password	
<b>3. Pairing Fixtures to Your Account for the First Time</b>	<b><u>4</u></b>
<b>4. Renaming and Controlling Individual Fixtures</b>	<b><u>5</u></b>
4.1 Renaming Individual Fixtures	
4.2 Controlling Individual Fixtures	
<b>5. Creating Zones</b>	<b><u>8</u></b>
5.1 Editing Zones	
5.2 Adding the Zone Control Remote	
<b>6. Creating Scenes</b>	<b><u>13</u></b>
6.1 Editing a Scene	
6.2 Deleting a Scene	
<b>7. Setting Up Timers</b>	<b><u>16</u></b>
<b>8. Programming the Master Control Remote (handheld &amp; decora)</b>	<b><u>19</u></b>
<b>9. Using Music Mode and Party Mode</b>	<b><u>20</u></b>
<b>10. Restore Fixtures to Factory Settings</b>	<b><u>21</u></b>

## 1. Overview

The Nora Lighting ControlLIT: Lighting Control app for iOS and Android enables the control of the PRISM Smart RGBW LED Retrofit downlight by Nora Lighting. It is designed for use by all end-users who are using these fixtures in any residential or commercial space. This guide is intended for users who are using an iOS device.

The app is currently available in the iTunes App Store for use with iOS 8.0+ and will be available in the Google Play store for use on Android on 2/5/2018.

The ControlLIT App allows users to control their PRISM downlights and program their optional PRISM remote controls. In the app, users are able to:

- Control individual fixtures or groups of fixtures
- Set up Zones, Scenes, Timers
- Control Brightness, Color Temperature, and Color

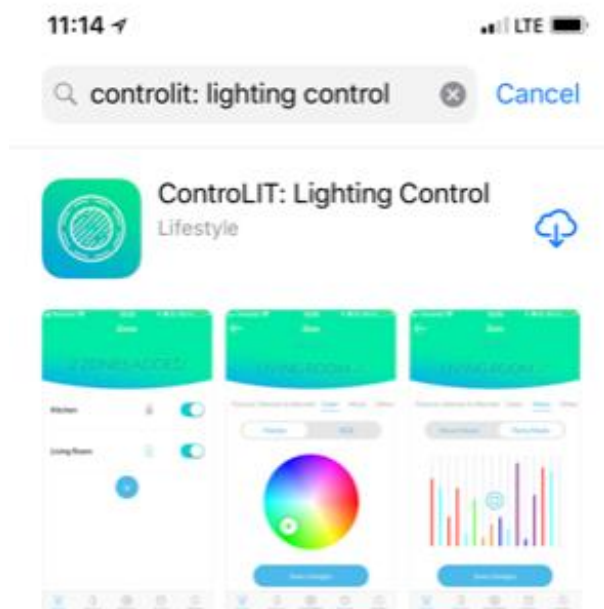
After downloading and launching the app, users will create an account that enables the lamps to be secured such that others cannot control them unless they use the same username and password.

## 2. GETTING STARTED

### 2.1 Download the ControlLIT: Lighting Control App

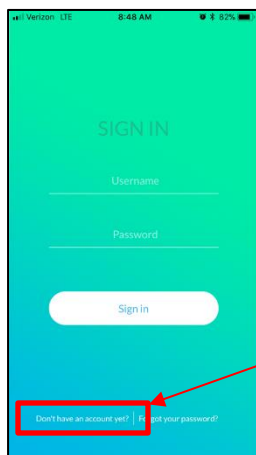
After you have installed your PRISM downlights, download the latest version of the Nora Lighting ControlLIT: Lighting Control app from the App Store and launch the app.

You may use part of the app name or the entire app name and the ControlLIT: Lighting Control app will appear in search results.

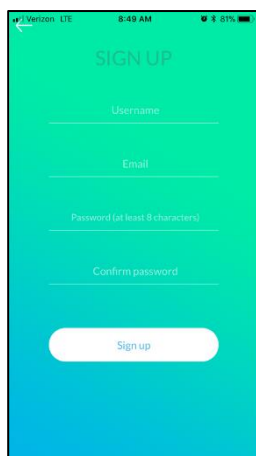



## 2.2 Creating a Username and Password

Creating a username and password is required to use the ControlLIT app. It allows users to secure their lighting fixtures so they cannot be controlled by another person who has the app on their smart device. **REMINDER:** If multiple users need access to the same light fixtures, they should use the same username and password. Think of this as the shared WIFI username and password you use to access internet in your home or business.



To create a username and password first launch the ControlLIT app on your smart device. After it has opened, click on the link “Don’t have an account yet?”.

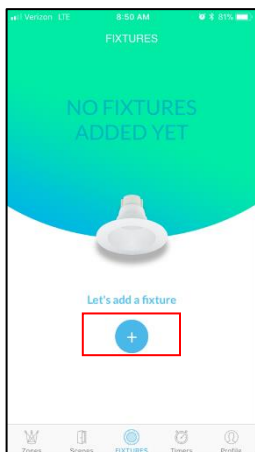



You will be prompted to create a username and password of your choice. An email address is also collected for you to reset your password should you forget it. When you have populated all the fields, press the  button.

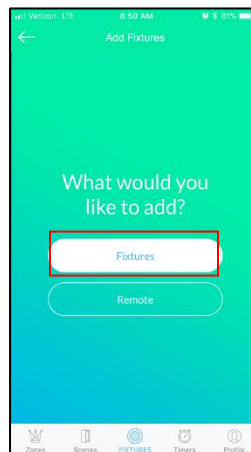
**Note:** It is possible to create multiple usernames tied to the same email account, if required. This would most likely apply to people in a multi-location application, such as an apartment building or multi-location restaurant. In these applications, there may be a single manager or management team that is responsible for programming the fixtures and managing accounts. They are able to create multiple usernames, such as a unique username per unit in an apartment building. This would allow for each unit to be controlled individually. Each username would need to go through the entire setup process outlined in the subsequent pages.

### 3. Pairing Fixtures to Your Account for the First Time (Required)

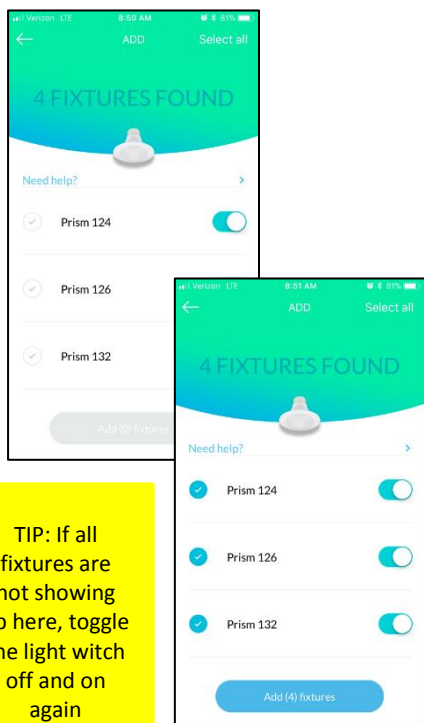
**⚠️** Before beginning this step make sure the wall switch of the fixtures you want to pair is on the “On” position. If other fixtures are within range and controlled on a different wall switch, but you don’t want to add those to your account, turn the wall switch controlling those lights in the “Off” position to make your pairing process easier. **⚠️**




**STEP 1** - You will be directed to the “Fixtures” screen after logging in. Since no fixtures have been paired before, you will see the screen above. To begin the discovery and linking process click 





**STEP 2** – Select “Fixture” since we are adding a fixture. This will prompt the app to scan for discoverable fixtures. If you are adding an optional remote, you’d select remote. This will be covered later.

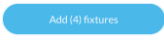


**TIP:** If all fixtures are not showing up here, toggle the light witch off and on again

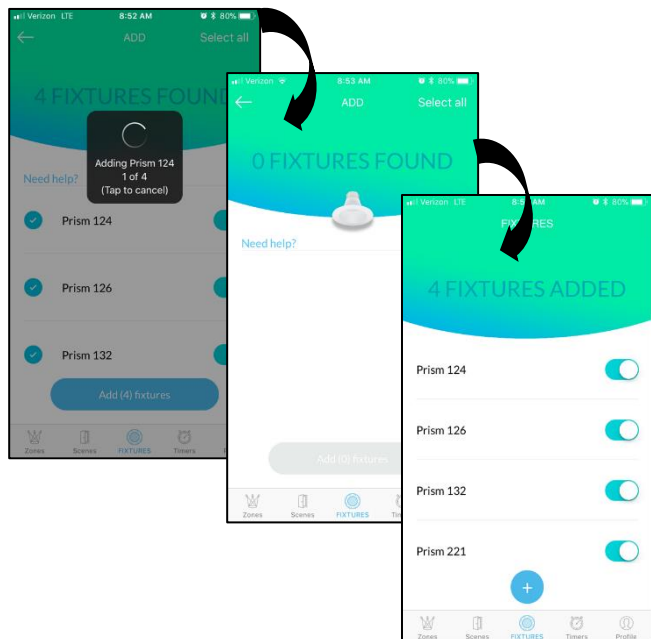
**STEP 3** – The available fixtures appear on the screen. They will all have a default name Prism XXX (can be changed after adding to your account) and will all be in the “ON” position (  ). The top will show how many fixtures have been discovered by the app. If there are more fixtures present than what are being discovered by the app, see the troubleshooting guide.

In most cases, you will be selecting all the fixtures shown, which is all the fixtures within range. In the event that you only want to add some, but not all, fixtures to your account, you can turn them On and Off individually to identify which fixture is which and only select those you would like to add. Tapping  will turn the fixture off (  ).

When you are ready to add your fixtures, you can tap on each fixture individually or tap “Select All” in the upper right corner of your screen to select all fixtures. You will notice the circle with the check mark to the left of the fixture name change color to signify it has been selected (see images to left).

When you have selected all of your fixtures, tap  .

Depending on the number of fixtures you are adding, it may take several minutes for the fixtures to be added.



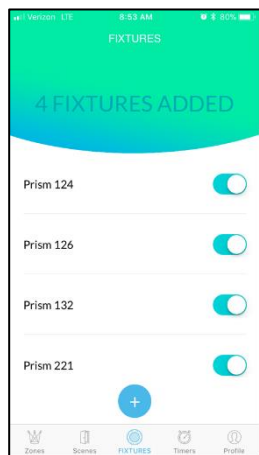
The app cannot be used while fixtures are being added. Once the fixtures are successfully added, and assuming you added all fixtures to your account, there will be no available fixtures on the "Add" screen.

Tap the ← on the upper left of the screen to see the fixtures that were added to your account.


## 4. Renaming and Controlling Individual Fixtures

### 4.1 Renaming the Fixtures

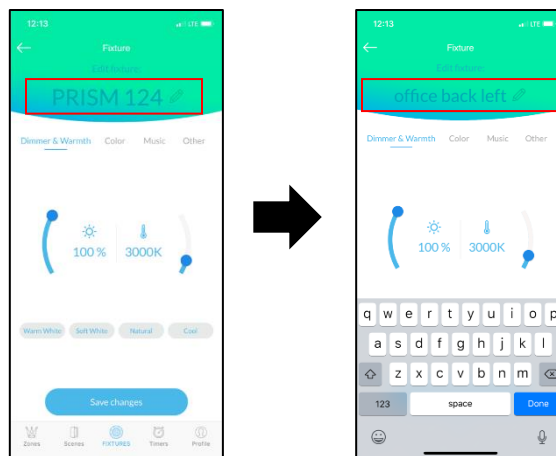
*(Tip: This step is required, but it is recommended. Renaming fixtures makes setting up zones and controlling single lights much easier.)*



**Step 1:** On the Fixtures screen, tap on the fixture you would like to rename. A screen will open that controls only that individual fixture.

**TIP:** Tap the  button to turn a fixture off/on to locate which fixture you are renaming/controlling.

**Step 2:** On the individual Fixture screen, tap the name of the fixture to enter edit mode. Rename the fixture then tap "Done" and finally the "Save changes" button to save the changes.



## 4.2 Controlling Individual Fixtures

### 4.2.1 Controlling Individual Fixtures – White Light

Through the app, and only the app, you may control individual lighting fixtures. Users can adjust CCT, control brightness, and set RGB color on individual fixtures. After you have set the fixture to the desired settings, tap “Save Changes.” As a default, the app will always open to the Dimmer & Warmth screen.

Control Mode:

- **Dimmer & Warmth** = CCT control and brightness
- **Color** = RGB Color Selection & RGB Dimming
- **Music** = Music mode & Party Mode
- **Other** = Additional features

Blue, underlined text indicates which control mode is selected.

**Virtual Dimmer:** Slide the button up and down to control brightness level. Lowest level is 5%.

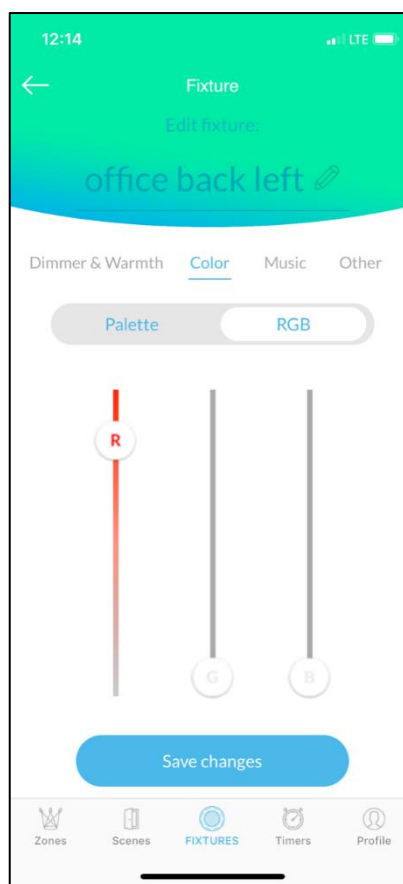
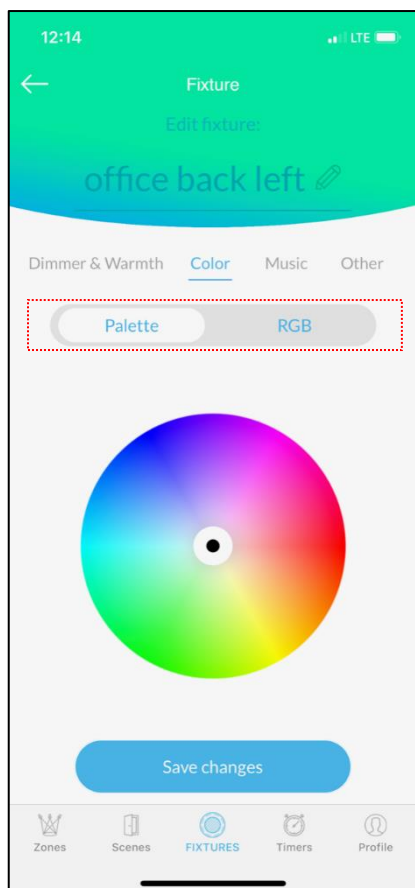
**Color Temperature of Light** (only for white light):

- Warm White = 2700K
- Soft White = 3000K
- Natural = 3500K
- Cool = 4000K

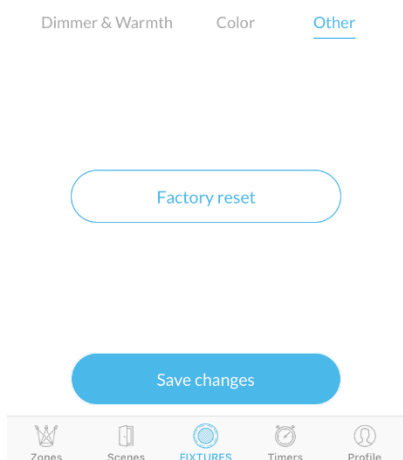
Tap the preset color or slide the button to select the CCT.

### 4.2.2 Controlling Individual Fixtures – RGB Colors of Light

Tap “Color” from the Control Mode panel to switch to RGB controls. This will take your fixtures out of White light and into RGB colors. Colors are chosen by sliding the dial along the rainbow (Palette Mode). For static R,G, B colors & Dimming of these colors, tap the RGB button and select the color you would like to set and dim on.



### 4.2.3 Controlling Individual Fixtures – Delete a Fixture From Your Account/Restore to Factory Settings



Deleting a fixture from an account is the same as restoring it to factory settings. When deleted/reset, the fixture becomes discoverable to others and can no longer be controlled through your account unless you re-add it.

To delete/restore a fixture, tap “Other” on the Control Mode, then tap



. Finish by tapping “Save Changes”.



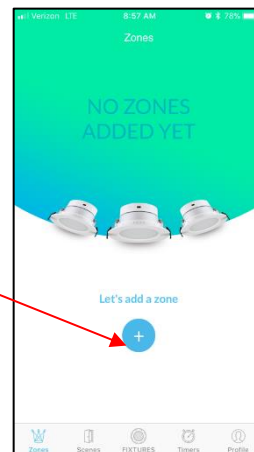
## 5. Creating Zones (optional)

Zones allow you to control multiple fixtures at the same time. Zones recommended for fixtures in a single room, which will usually be controlled together. For example, a home that has Prism fixtures installed in the living room, dining room, and den, three zones can be created, one for each room. There is a maximum of 8 zones per username.



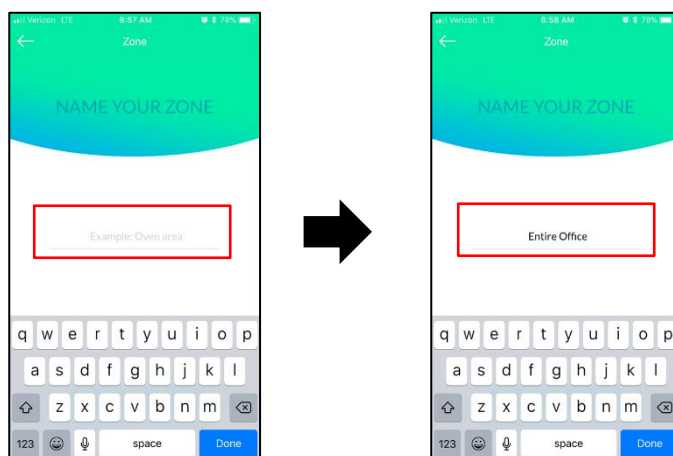
**Step 1:** Tap the Zones icon on the bottom of your screen.



On the Zones screen, tap the + icon to enter the Zone Set Up Mode.

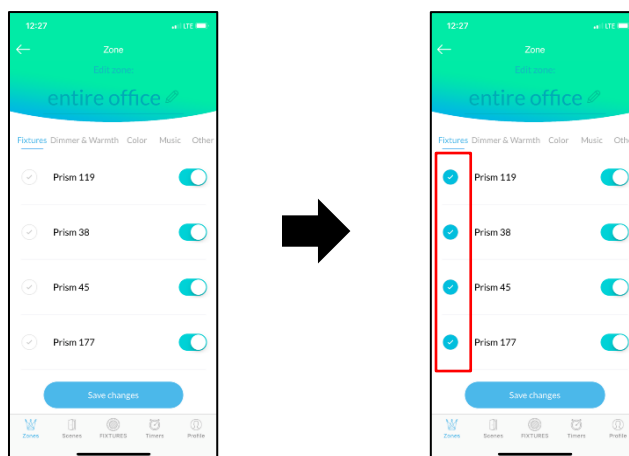


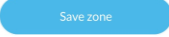
**STEP 2 –** Name your zone by typing in the name of your choice. When you are done typing, tap “Done”

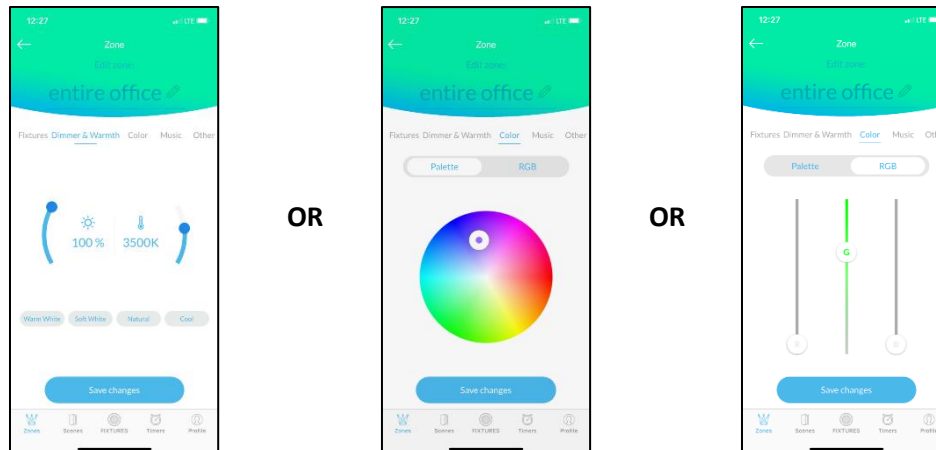
Done



**STEP 3** – Select the fixtures you would like included in this zone. Tip: Fixtures can be turned on/off to ensure the right ones are being added using . Tap the checkmark to the left of the fixture name to select it to be added to the zone. After you have selected all of the fixtures you wish to add to the zone, tap Next .



**STEP 4** – Set the CCT and Brightness or Color. Make your selections the same way you would control an individual fixture. Tap “Dimmer & Warmth” to control the CCT and brightness or “Color” to select an RGB color or RGB dimming. After the lighting has been set for the zone, tap “Save Zone.” .



## 5.1 Editing a Zone

After a zone has been created, it can be edited. Users can Add and Remove fixtures from zones and adjust the CCT, Brightness, and Color as desired. Always tap “Save Changes” when you have set your zone as desired.

**Tap to control CCT level and Brightness**

**Tap to control RGB color**

**Tap “Music” to access music and party mode.**

**Tap “Other” to view other options:**

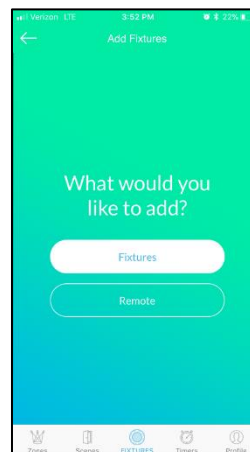
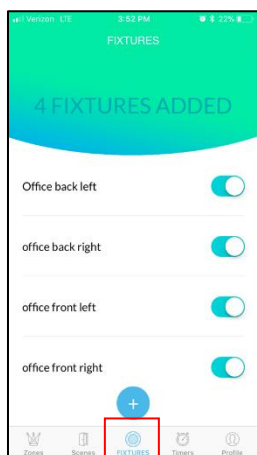
- Assign this zone to a remote button
- Delete the zone


**Add/Remove fixtures from zone. Tap to select or deselect. Underlined blue text indicates that mode is selected.**


(Continued on next page)


## 5.2 Adding the Zone Remote (optional)

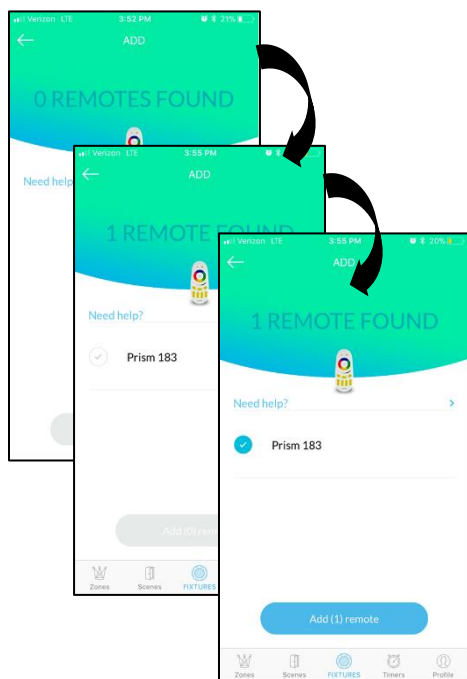
Optional Zone Control remotes, purchased separately, must be programmed via the app. Each Zone Control remote can control On/Off, Dimming and CCT for up to four zones. Zone Control remotes do not control RGB. To program the Zone Control remote, you must first add the remote to your account via the app. Once the remote is added, you can assign zones to buttons 1-4 of the remote.



**STEP 1** – Tap the fixtures  icon at the bottom of the screen to go to the Add Fixture screen. Then

tap  like you would if you were adding a fixture.

**STEP 2** – On the Add Fixture screen, tap “Remote” .



**STEP 3** – The screen will say “0 remotes found.” Pick up your remote and do the following:




**First:** Press and hold the top On button ( I ) and the Off button ( O ) of Zone 2 simultaneously until the red light flashes once. (see image on left)

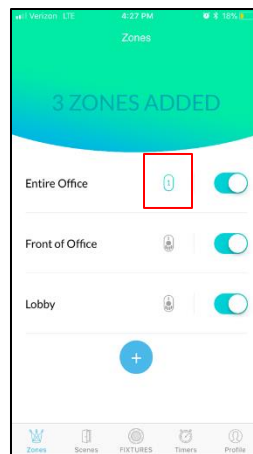
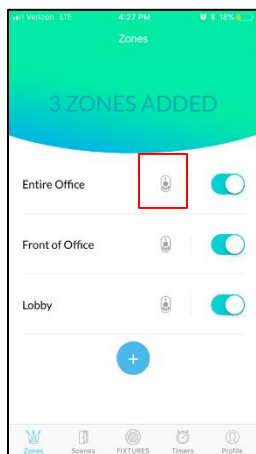


**Then:** Press and hold the top On button ( I ) and the On button ( I ) of Zone 3 simultaneously. The red light in the center will flash and turn off. Once the red light has flashed, release the buttons. (see image on left)

**Last:** Your phone will now show a remote with the default name Prism XXX. Tap the checkmark to select the remote and then tap “Add Remote”.



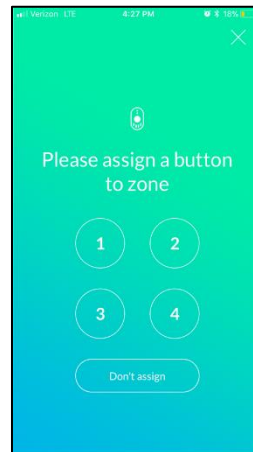
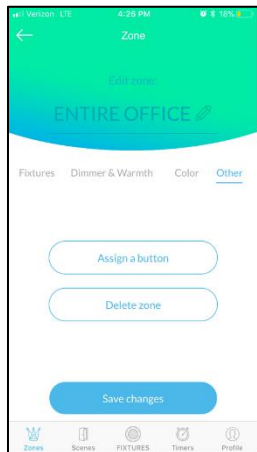
**Step 4:** Tap the Zones icon  at the bottom of the screen. The grey remote icon appearing to the right of a zone name, indicates that the zone is not yet programmed to work with the optional remote. Once a zone has been assigned to a zone on the remote, the icon will indicate which zone on the remote it is.

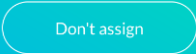


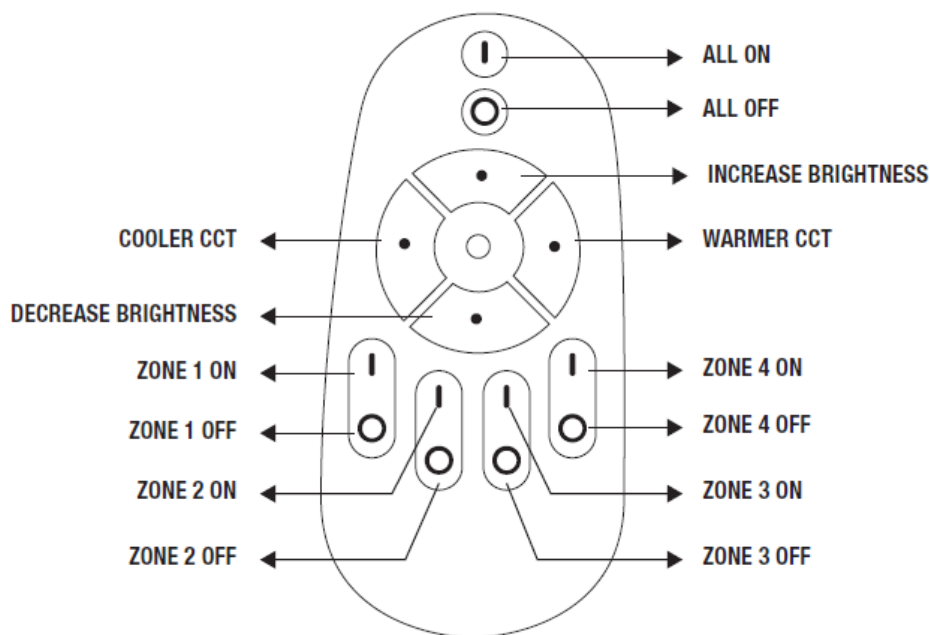
**Step 5:** Tap to select the zone that you wish to program to work with the remote. Once you are on the edit zone screen, tap “Other” then tap “Assign a button.”



**Step 6:** On the next screen, the numbers correspond to the zones on the remote. Select the number you would like that corresponds with the same remote button.



**NOTE:** If you want to keep a zone, but no longer want it assigned to the Zone Control Remote, follow steps 5 and 6 above. On the assign screen tap “Don’t Assign” .




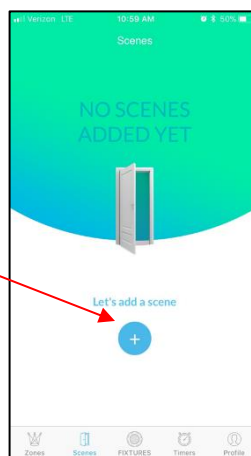
## 6. Creating Scenes (optional)


Scenes allow you to control multiple zones at the same time. For example, in a home that has Prism fixtures set in three zones - living room, dining room, and den – there may be times when you will want to control all zones together. Scenes allow you to do this. Repeat these steps for any scene you want to add. Please note that scenes can only be applied to zones and not individual fixtures.

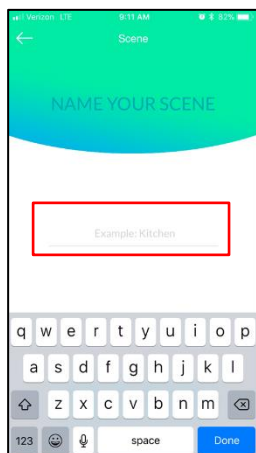



**Step 1:** Tap the Scenes **Scenes** icon on the bottom of your screen.

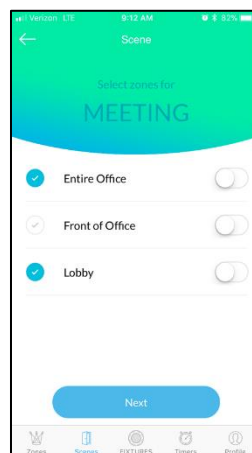
Then tap the + icon  to enter the Scene set up mode.

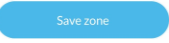


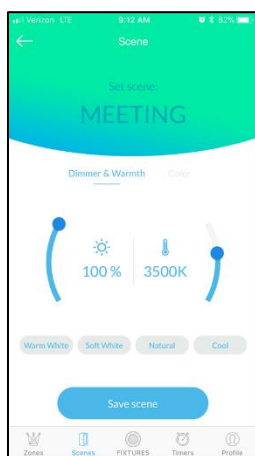
**STEP 2** – Name your scene by typing in the name of your choice. When you are done typing, tap “Done” 



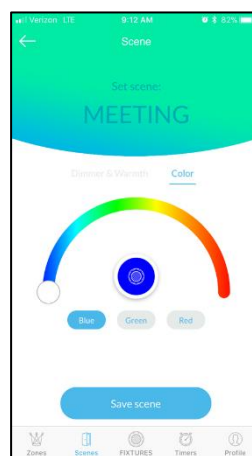
**STEP 3** – Select the scene you would like included in this scene. Tap the checkmark to the left of the scene name to select it to be added to the Scene. After you have selected your desired zones, tap Next . (Example below: The Entire Office and Lobby zones are added to Meeting scene. Front of Office zone is not included in this scene.)



**STEP 4** – Set the CCT and Brightness or Color for this scene. This will apply the same settings to all the zones in that scene. Make your selections the same way you would control an individual fixture. Tap “Dimmer & Warmth” to control the CCT and brightness or “Color” to select an RGB color. After the lighting for the scene is selected, tap “Save Scene” 



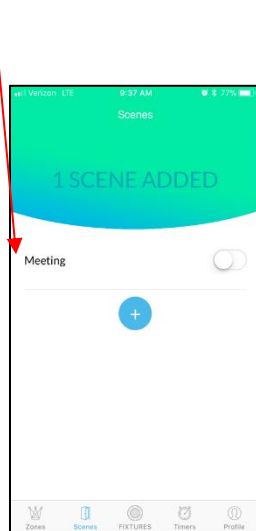
OR



## 6.1 Editing a scene

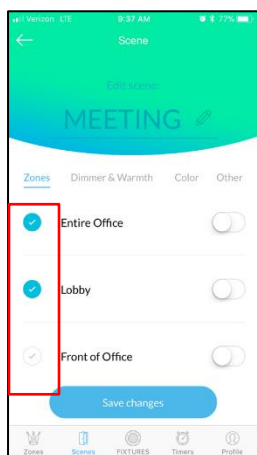
After a Scene has been created, it can be edited. Users can Add and Remove zones from scenes and adjust the CCT, Brightness, and Color as desired. Always tap “Save Changes” when you have set your scene as desired. To turn scenes on/off tap the switch to the right of the Scene name.

**Step 1:** On the Scenes screen, tap the name of the scene you would like to edit.

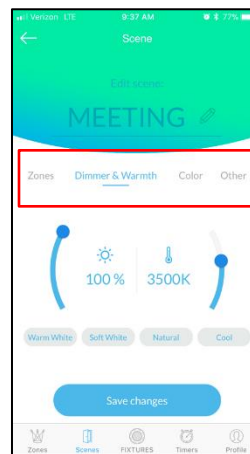


**STEP 2** – Add or remove Scenes from the scene by tapping to select or deselect zones. Zones in the scene will have a blue checkmark to the left of the

zone name.



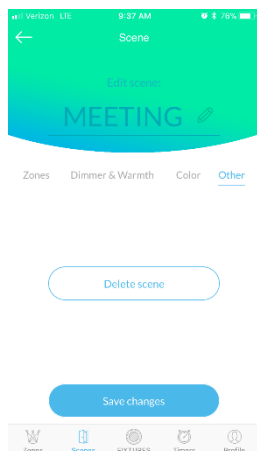
**STEP 3** – Tap “Dimmer & Warmth” or “Color” to adjust the brightness, CCT, or Color of the Scene. Always tap “Save Changes” when you are done editing the scene.





## 6.2 Deleting a Scene

Tap the “Other” tab and then tap “Delete Scene.”

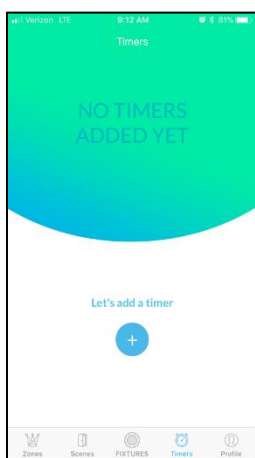




## 7. Setting Up Timers (optional)

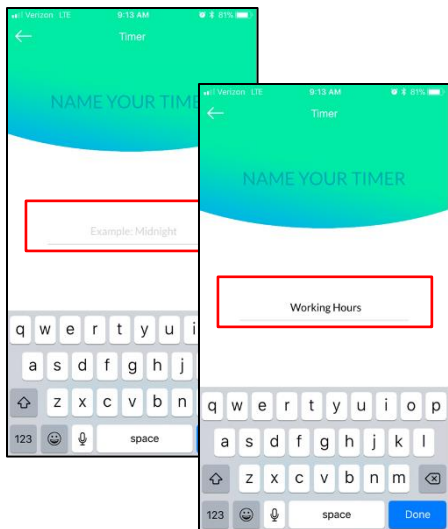
The timer allows the establishment of auto-on and auto-off settings for individual zones. Users may also select what day(s) of the week they want the timer to be applied to. When setting up timers, users are able to set the CCT and brightness level their lights will come on at.



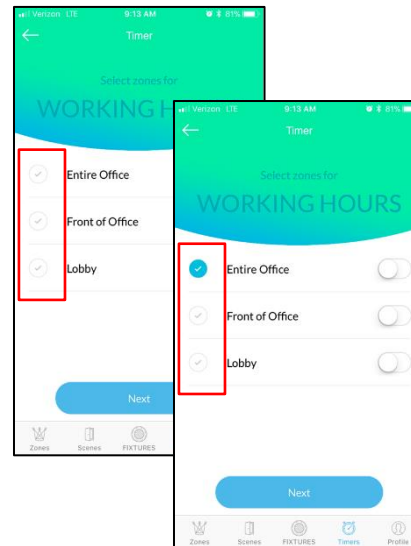
**Step 1:** Tap the Timers icon **Timers** on the bottom of your screen.




**STEP 2** – Tap  to add a new timer and then name your timer. This step is similar to naming Zones and Scenes. After you have typed in the timer name, tap Done 



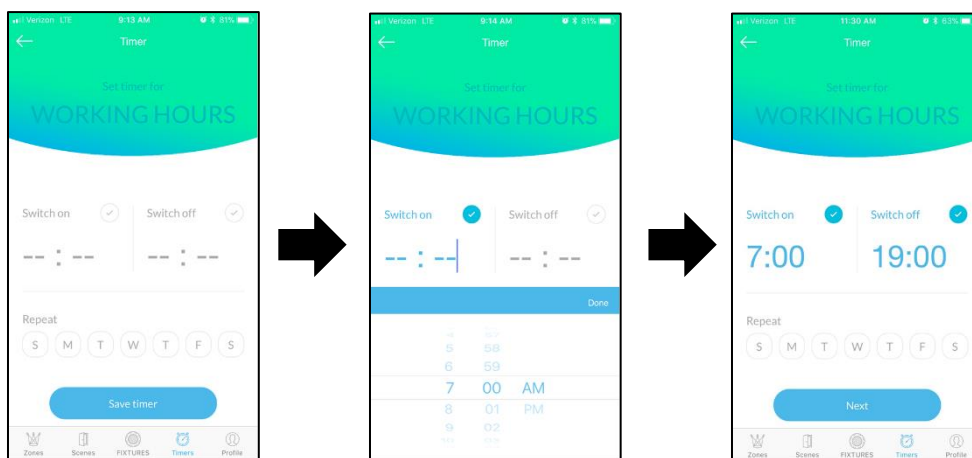
**STEP 3** – Select the Zone(s) that the timer will be applied to by tapping the circle with the checkmark. As always, if the checkmark is blue, it indicates that zone has been selected. Note: Timers cannot control individual fixtures. If you want to control just one fixture, then establish that fixture as its own zone.




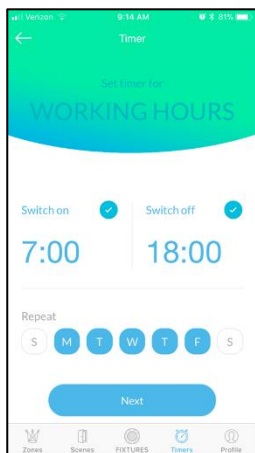
**Step 4:** Set the timer to your desired Settings. Users can establish both an “On” and “Off” time or select just one – On or Off.

To set an On time, tap the “Switch On” checkmark  so it is highlighted in blue. A time selection screen will open below it. Use this to set the time you would like your fixtures to come on, then tap Done when you are finished. If you are only setting an On time, continue to step 5 now.

If you are setting an Off time, repeat these steps again, but tap the “Switch Off” checkmark.



**STEP 5** – Once you have established your On and/or Off time, set the frequency for this alarm by tapping the day of the week. Highlighted days are the days which the timer is being applied to. For example, the Working Hours timer will turn on the lights at 7AM every Monday – Friday and turn them off at 6 PM every Monday – Friday. Users can set any day/frequency they desire. Once the frequency is set, tap next 




**STEP 3:** If you set an On time, select the brightness and CCT level you would like your lights to turn On to. Adjust these the same way you would make adjustments in fixtures, Zones, and Scenes. Users can only establish a White light setting for the timer. Tap “Save Timer”  when you have established the proper setting.

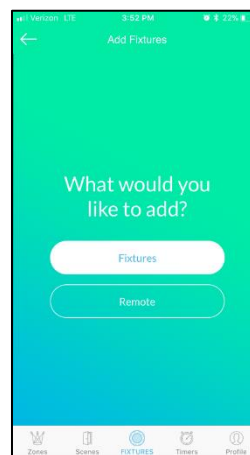
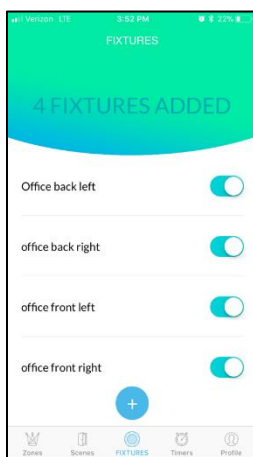



## 8. Programming the Master Control Remote (Optional) – Handheld and Decora

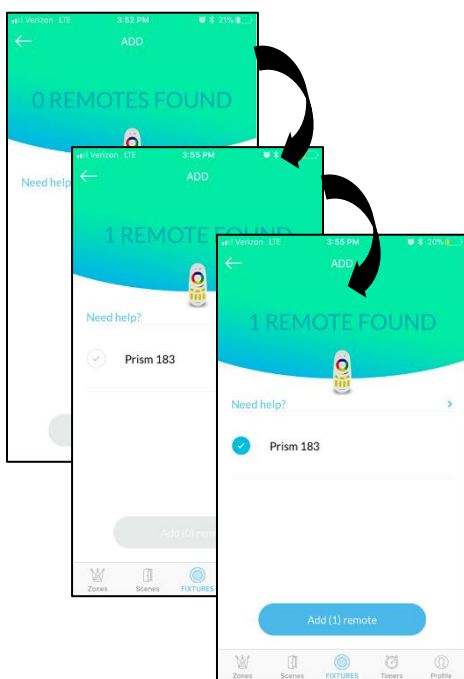
If users have purchased the optional Master Control remote and are using the ControlLIT app, they will have to pair their remote to their ControlLIT account. The Master Control will control all fixtures within range. With the Master remote, users can control the On/Off, brightness, CCT, and RGB color of all fixtures. **NOTE:** The Master Control remote will work out of the box with all Prism downlights that are not paired with any ControlLIT account. Once either your remote or fixtures are paired with a ControlLIT account, the remote will only control fixtures on that same account.

**STEP 1** – Tap the fixtures  icon at the bottom of your screen to go to the Add Fixture page. Then

tap  like you would if you were adding a fixture



**STEP 2** – On the next screen, tap “Remote”  because we are adding a remote.



**STEP 3** – You will notice the screen saying “0 remotes found.” Pick up your remote and do the following:



- 1) Handheld remote:** Press and hold the top On button ( I ) and the Off button ( O ) of G (see image on left) simultaneously until the red light flashes once.

**Decora remote:**



- 2) Handheld remote:** Press and hold the top On button ( I ) and the On button ( I ) of B (see image on left) simultaneously. The red light in the center will flash and turn off. Once it has flashed, release the buttons

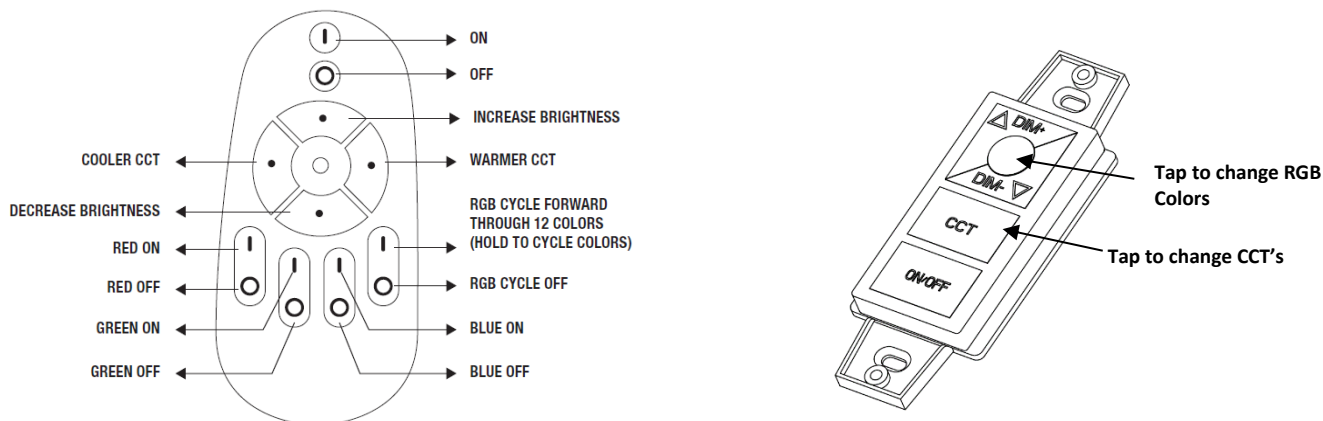
**Decora remote:** Press and hold the CCT and On/Off buttons simultaneously. You will notice a red light blinking. Release after you see the blinking.

- 3) Both remotes:** Look at your phone and you will see a remote now showing with the default name Prism XXX. Tap the checkmark to select the remote and then tap “Add Remote”

Congratulations! You successfully paired your Master Control with your Prism downlights and can control your lights via the app or the remote control.

### 8.1 Handheld Master Control Remote versus Decora Controller

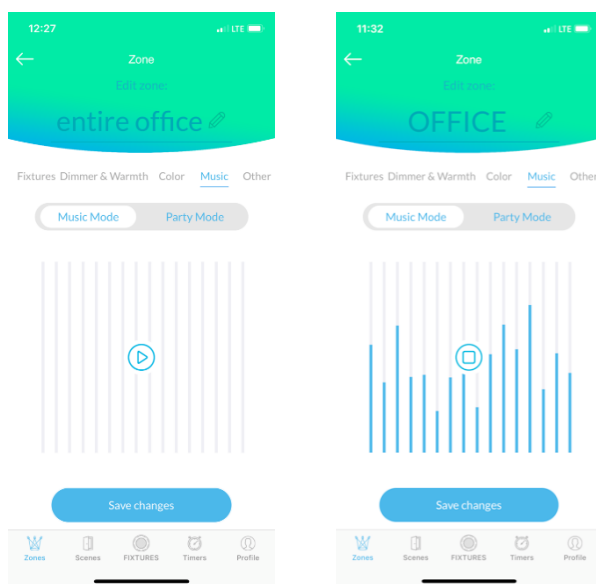
The Handheld master controller and decora controller have only one major difference – RGB dimming is available in the Handheld master control, but not on the decora controller. To dim RGB colors on the handheld remote, hold the “O” button of R, G, or B and you will notice the fixtures dim.





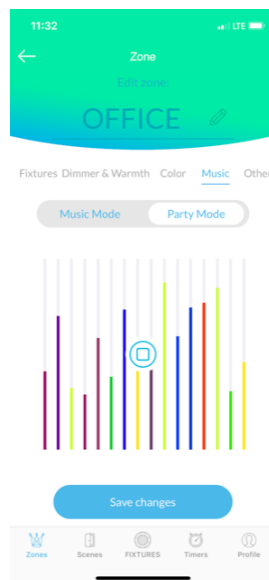
## 9. Using Music Mode & Party Mode

Users can enjoy two fun party features in the ControLIT App. Music mode utilizes the microphone of the device controlling the app to have the lights change with the beat of music/sound. Party mode will change the colors of the light every second irrespective of music/sound that is playing. Music & Party mode functionality is available on an individual fixture level, for zones, and in scenes mode. Steps followed are the same:

**Music Mode:** Tap the “Music” header in the app. It will default to Music Mode, but if Music Mode is greyed out, tap “Music Mode”. Tap the icon and grant access to your phones microphone for the feature to work. When sound is being received, you will notice bars moving up and down. Turn off music mode by tapping . You do not need to keep the App open on your screen for music mode to work.



**Party Mode:** Tap the “Music” header in the app. Then tap “Party Mode”. Tap the  icon to activate party mode. You will notice colored bars showing it is activated. Turn off Party Mode by tapping . You do not need to keep the App open on your screen for Party Mode to work.



## 10. Restore Fixtures to Factory Settings

Prism downlights can be restored to factory settings through the app itself or through an on/off sequence via the wall switch. Users should reset fixtures when they are unpairing them from their ControlLIT account or deleting them from their account. Some reasons why light fixtures should be reset:

- You want to pair the fixtures with a different account than the one you are currently using
- You are moving from the house/office/apartment/etc. and a new tenant will move in
- You moved into a new space and the previous tenant forgot to reset their fixtures to factory settings
- Fixtures have become unresponsive – you can troubleshoot by resetting them

To restore fixtures to factory settings when you can login to the ControlLIT account the fixtures are paired with, fixtures can be restored to factory settings via the app or via the wall switch. **Section 4.2.3** contains the steps for doing a factory reset through the app.

To restore fixtures to factory settings when you can no longer access the ControlLIT account that the fixtures were paired with, a hard reset must be done via the wall switch as described here:

1. Start with the fixtures in the Off position
2. Turn the fixture On and leave on for one second
3. Turn the fixture Off and leave off for 6 seconds
4. Turn the fixture On and leave on for one second
5. Turn the fixture Off and leave off for 6 seconds
6. Turn the fixture On and leave on for one second
7. Turn the fixture Off and leave off for 6 seconds
8. Turn the fixture On and leave on for 6 seconds
9. Turn the fixture Off and leave off for 6 seconds  
Turn the fixture On and leave on for 6 seconds  
Turn the fixture Off and leave off for 6 seconds then turn on