

MAGNETA Wall Sconce

oxygen

120v : **3-528-xxx**

277v : **37-528-xxx**

FIXTURE TYPE _____

LOCATION _____

PROJECT _____

DATE _____



-14 Polished Chrome



-24 Satin Nickel



-40 Aged Brass

Diffusers:

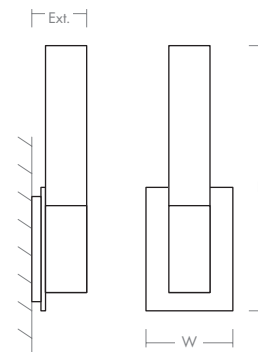
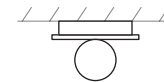


-1 White Opal Glass



Matte White Acrylic

- LIGHT SOURCE** 1 x 11.9W LED, 3000K, CRI 90
- LUMINAIRE POWER** 15.2W at 120V
- RATED LIFE** 60000 hr RL
- OPTIONAL COLOR TEMPERATURES** 2700K, 3500K, 4000K
- LUMEN OUTPUT** Delivered: (-1) Glass: 690 lm (LM-79)
Acrylic: 735 lm (LM-79)
- INPUT VOLTAGE** 120V or 277V
- DRIVER OUTPUT** 350mA, 12W
- DIMMING** 0-10v & Phase (ELV) Dimming - 50/60Hz 100% to 10% Dimming
- CONSTRUCTION** Plated Steel and Acrylic /or Glass
- DIFFUSER/METAL FINISHES** (-114) White Opal Glass / Polished Chrome
(-124) White Opal Glass / Satin Nickel
(-140) White Opal Glass / Aged Brass
(-14) Matte White Acrylic / Polished Chrome
(-24) Matte White Acrylic / Satin Nickel
(-40) Matte White Acrylic / Aged Brass
- MOUNTING** 4" Octagonal J-Box, 2"x 3" J-Box
- STANDARDS** ETL Dry/Damp listed, ADA compliant, Conforms to UL STD 1598, Certified CAN/CSA, STD C22.2 No 250.0.



DIMENSIONS

- W:** 4.75"
- H:** 14.36"
- Ext:** 3.00"
- M.C:** 11.00" From top of fixture

Order example for standard fixture:

3-528-124 (x- Voltage - xxx-Sequence # - x-Diffuser - xx-Finish)

3: 120v, 37: 277v

Order example for optional color temperatures: **3-528-27124**

27: 2700K, 35: 3500K, 40: 4000K

