



1718 W. Fullerton Chicago, IL 60614
 Ph: 773.770.1195 • Fax: 773.935.5613
 www.PureEdgeLighting.com • info@PureEdgeLighting.com
 © 2016 PureEdge Lighting. All Rights Reserved.

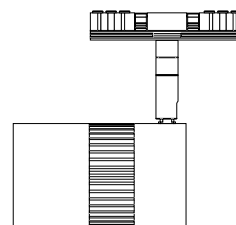
Installation Instructions for T24M Radiant Medium Track Head

T24M-RADM_

IMPORTANT INFORMATION

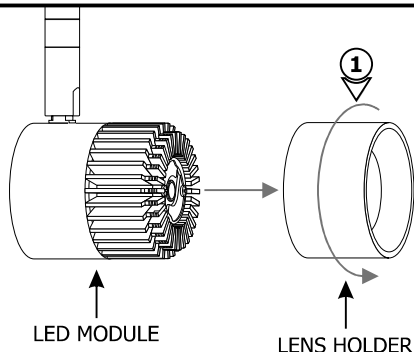
- This product is suitable for indoor locations.
- Ensure that power to the electrical box is **OFF** before beginning installation.
- These lighting fixtures must be used with PureEdge Lighting 24 volt magnetic track system only.
- This product is dimmable when the system is powered with PureEdge 0-10 volt, ELV and Universal power supplies.

SAVE THESE INSTRUCTIONS!



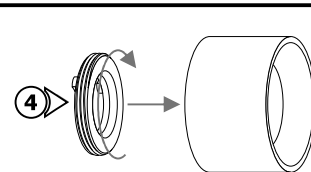
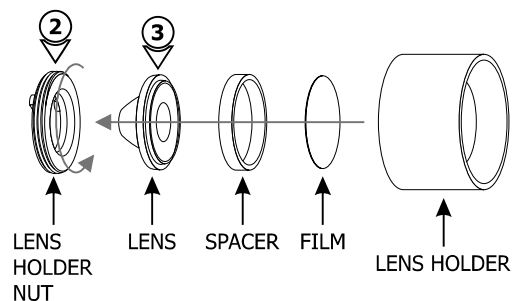
Section One: Replace the Lens

A



1: Unscrew the lens holder counter-clockwise and remove it from the LED module.

B

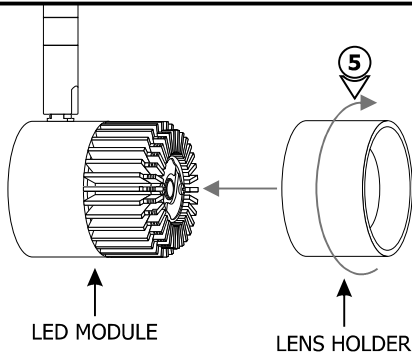


2: Unscrew the lens holder nut counter-clockwise and remove the lens, spacer and film.

3: Replace the lens. Place the spacer and film in front of the lens and into the lens holder.

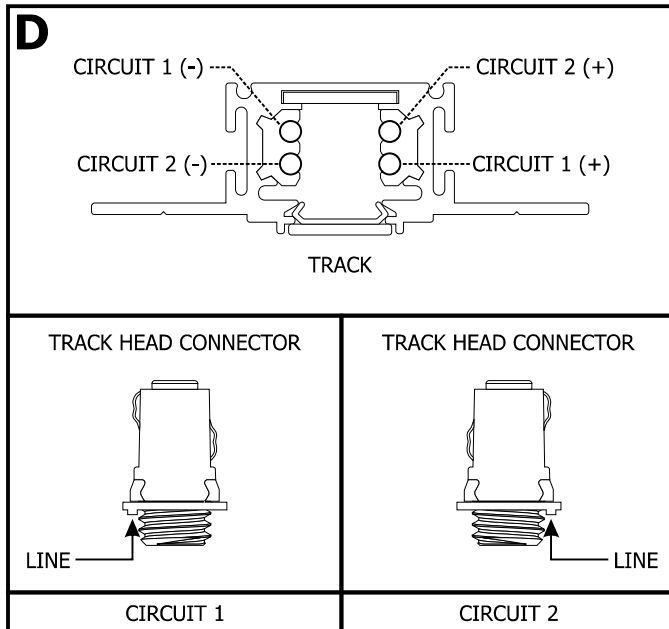
4: Screw the lens holder nut back into the lens holder clockwise to secure in place.

C



5: Screw the lens holder back clockwise to secure in place.

Section Two: Install the Track Head



1: Identify the line on the Track Head Connector Cover that denotes Circuit 1 or Circuit 2. Choose Circuit 1 or Circuit 2 to power the track head fixture by rotating the track head connector 180 degrees.

NOTE: Refer to the instructions provided with the track to install the system.

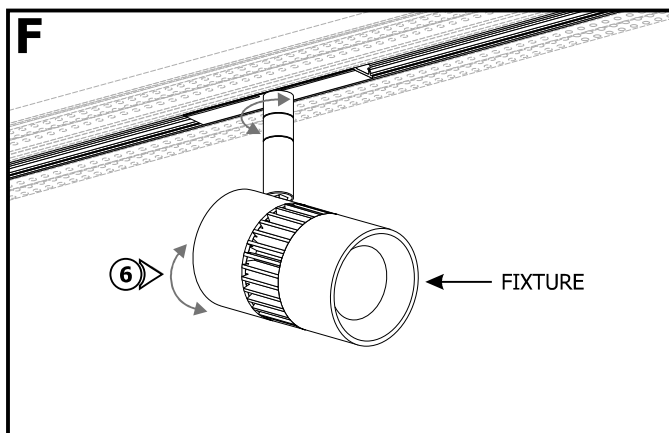
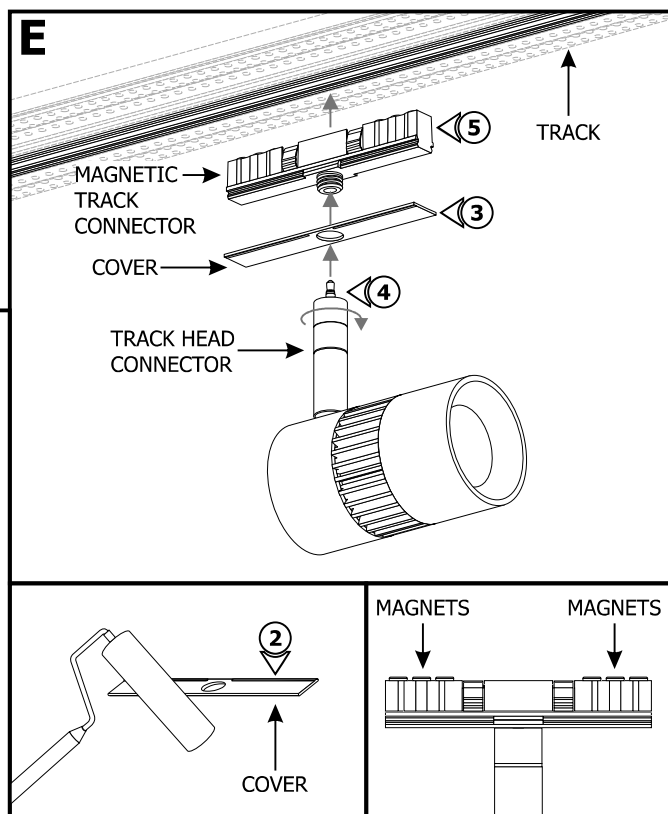
2: If necessary, unscrew the track head connector and remove the cover. Paint the cover to match the drywall paint.

3: Place the cover back onto the magnetic track connector.

4: Plug the track head connector into the magnetic track connector. Use fingers to tighten the connector and secure in place.

5: Insert the magnetic track connector into the track. The magnets on the back will keep the connector in place.

NOTE: DO NOT place the magnetic track connector over LED Soft Strip.



6: Adjust the fixture to the desired position by rotating the body vertically or horizontally.

7: Turn the power on.

NOTE: This fixture consumes **10** watts and contains integrated LED lamps which are rated for 50,000 hours.