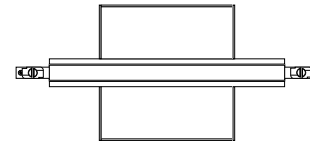




1718 W. Fullerton Chicago, IL 60614  
 Ph: 773,770,1195 • Fax: 773,935,5613  
 www.PureEdgeLighting.com • info@PureEdgeLighting.com  
 © 2016 PureEdge Lighting. All Rights Reserved.

## Installation Instructions for TS24M Track Surface Magnetic Two Circuit - Center Power Feed

TS24M-2C-CP- \_



### IMPORTANT INFORMATION

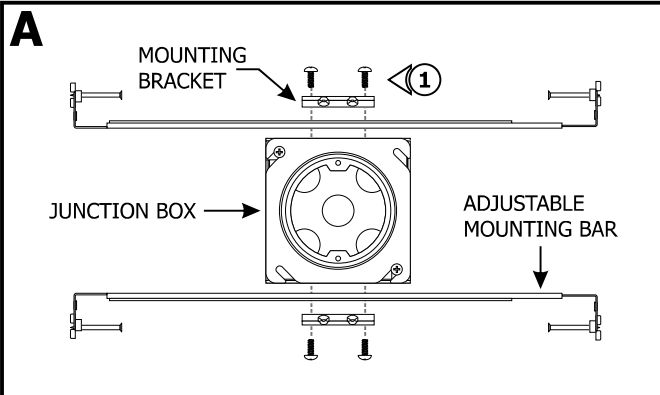
- Read all of these installation instructions before installing the track system and refer to them when additions to or changes in the track configuration are made.
- **DO NOT** install this track in damp or wet locations.
- **DO NOT** install any part of a track system less than 5 feet above the floor. **DO NOT** install any luminaire assembly closer than 6 inches from any curtain or similar combustible material.
- Disconnect the electrical power before adding to or changing the configuration of the track.
- Only install luminaires identified with Pure Edge Lighting track systems. **DO NOT** attempt to connect any power tools and equipments to the track system.
- **DO NOT** overload each branch of track connected to the Track Power Feed Connectors resulting in a risk of fire.
- The system is "ETL" listed for USA and Canada only when all the products used are supplied by Pure Edge Lighting.
- **DO NOT** field modify this component.

### GENERAL INFORMATION

- This instruction shows a typical installation.
- Before beginning any electrical work, ensure that the power to the electrical box is **OFF**.
- This product must be installed by a qualified electrician and in accordance with local electrical codes.

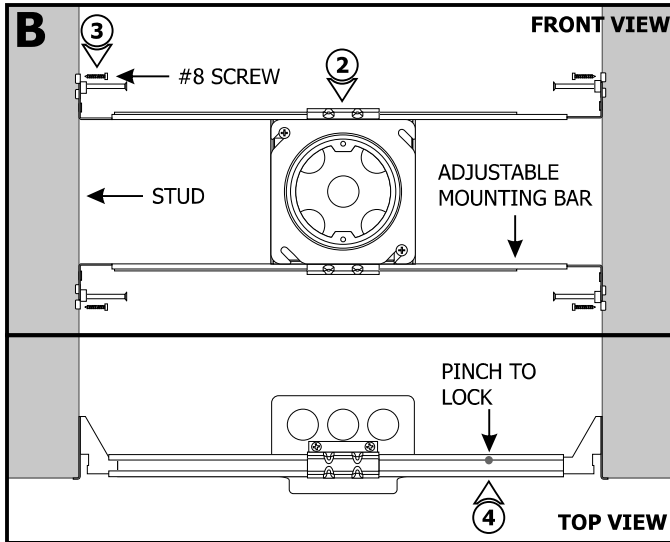
**SAVE THESE INSTRUCTIONS!**

## Section One: Install the Deep Junction Box



**NOTE:** Ensure that power to the junction box is **OFF** before beginning installation.

- 1:** Mount each adjustable mounting bar to one side of the junction box and secure them with the mounting brackets and two Phillips screws provided.

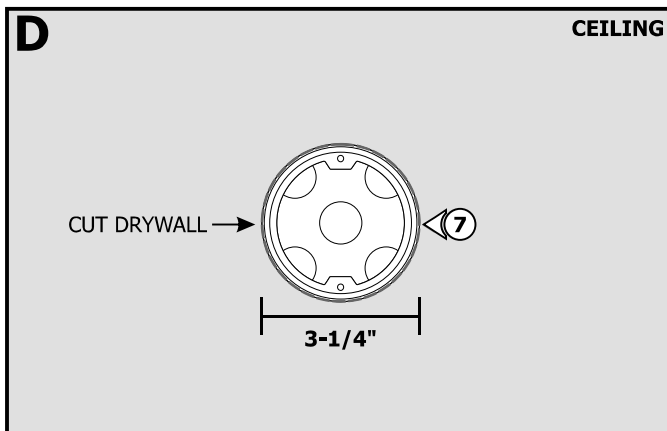
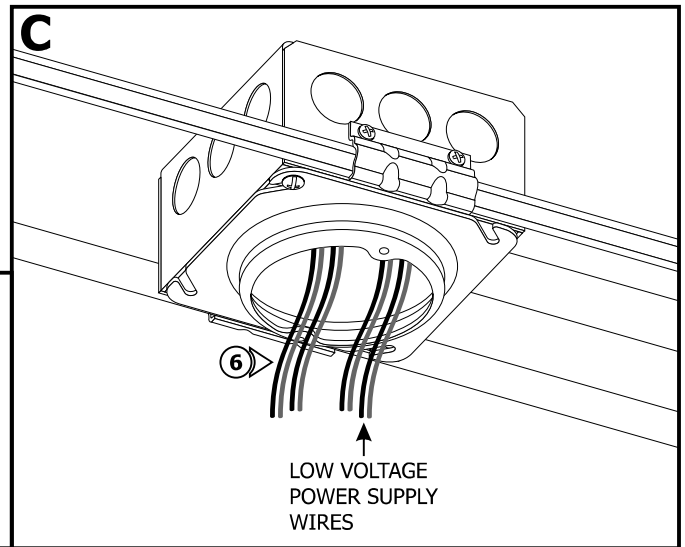


**NOTE:** Adjustable mounting bars mount to studs that are spaced 14.5" to 25" apart.

- 2: Select the location between the two studs for the junction box to be mounted.
- 3: Place the adjustable mounting bar tabs between the studs. Secure the adjustable bars to the studs with the #8 screws.
- 4: Pinch anywhere on the inner edge of the mounting bars to lock in place.

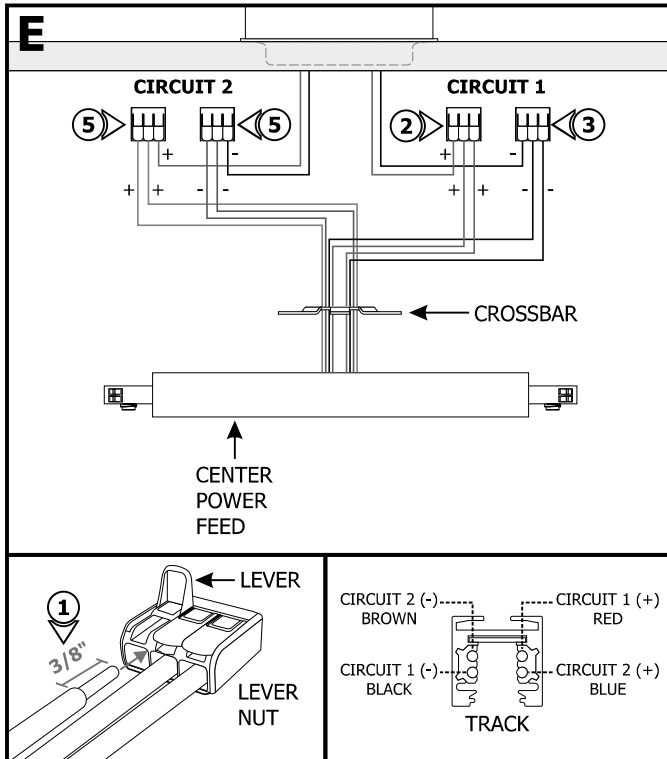
**NOTE:** Remote power supply wires must be present in the junction box. Refer to the instructions provided with the power supply.

- 5: Remove a knockout to install a conduit into the junction box. Install conduit(s) (if required by local electrical code).
- 6: Run the low-voltage 24V wires coming from the remote power supply to the junction box.



- 7: Use a circular saw to cut out the drywall section where the plaster ring is located.
- 8: Install the drywall. If necessary, plaster and finish the drywall.

## Section Two: Install the Center Power Feed



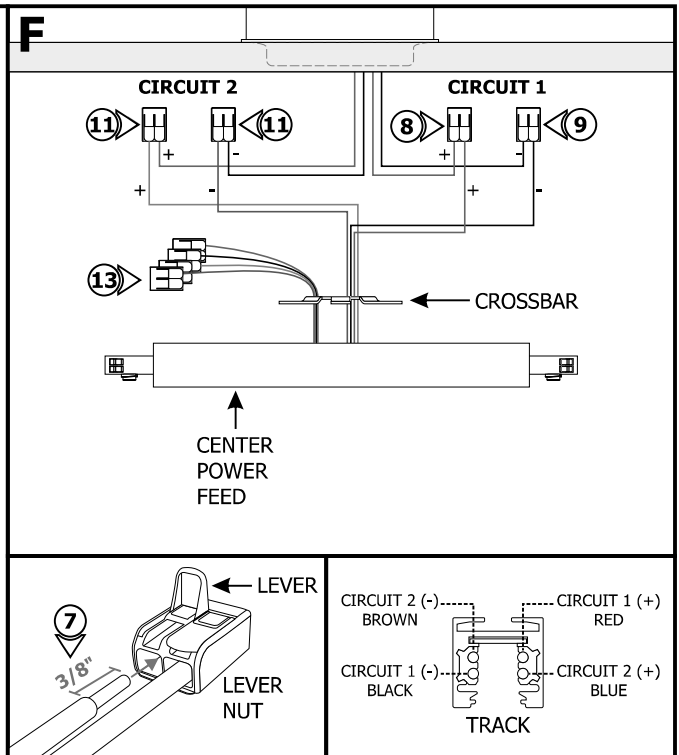
**NOTE:** Follow steps 1-6 for connecting the Center Power Feed as a single two circuit center feed. Omit steps 7-13.

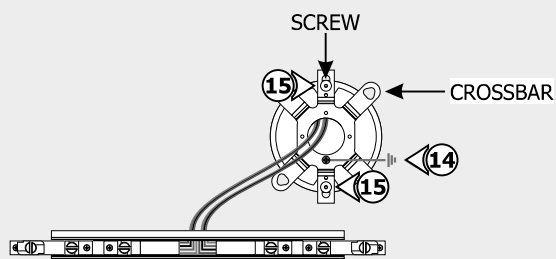
### Single Two Circuit Center Feed:

- 1:** Strip 3/8" off of the low voltage power supply wires.
- 2:** On the lever nut that the Circuit 1 POSITIVE red Power Feed Connector wires are connected, pull up the available lever and insert the low voltage +24VDC power supply wire. Push the lever down to connect and lock into place.
- 3:** On the lever nut that the Circuit 1 NEGATIVE black Power Feed Connector wires are connected, pull up the available lever and insert the low voltage -24VDC power supply wire. Push the lever down to connect and lock into place.
- 4:** Lightly tug on the wires to ensure they are secured in place.
- 5:** Repeat steps 1 through 4 to connect the Circuit 2 POSITIVE blue wires and NEGATIVE brown wires from both Power Feed Connectors to the +24VDC wire and -24VDC wire of the second power supply respectively.
- 6:** Place the lever nut connections inside the junction box.

### Dual Two Circuit Center Feed:

- 7:** Strip 3/8" off of the low voltage power supply wires.
- 8:** On the lever nut that the Circuit 1 POSITIVE red Power Feed Connector wire is connected, pull up the available lever and insert the low voltage +24VDC power supply wire. Push the lever down to connect and lock into place.
- 9:** On the lever nut that the Circuit 1 NEGATIVE black Power Feed Connector wire is connected, pull up the available lever and insert the low voltage -24VDC power supply wire. Push the lever down to connect and lock into place.
- 10:** Lightly tug on the wires to ensure they are secured in place.
- 11:** Repeat steps 7 through 10 to connect the Circuit 2 POSITIVE blue wire and NEGATIVE brown wire from the same Power Feed Connector to the +24VDC wire and -24VDC wire of the second power supply respectively.
- 12:** Place the lever nut connections inside the junction box.
- 13:** Repeat steps 7 through 12 to connect the remaining Power Feed Connector to the remaining power supplies.



**G**

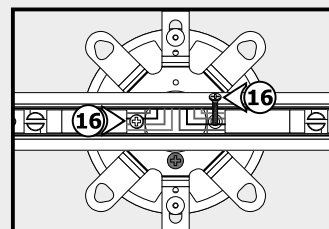
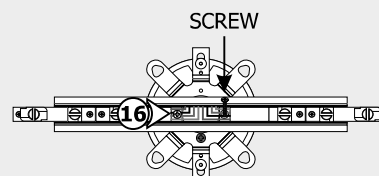
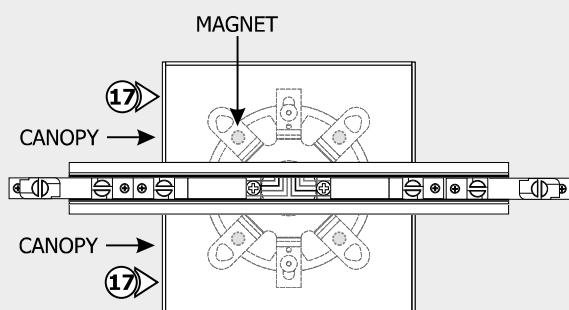
**14:** Make sure the crossbar is grounded in accordance to local electrical codes.

**15:** Mount the crossbar to the junction box with the two screws using a 2mm Allen wrench.

**NOTE:** The crossbar must be flush with the drywall. Do not overtighten.

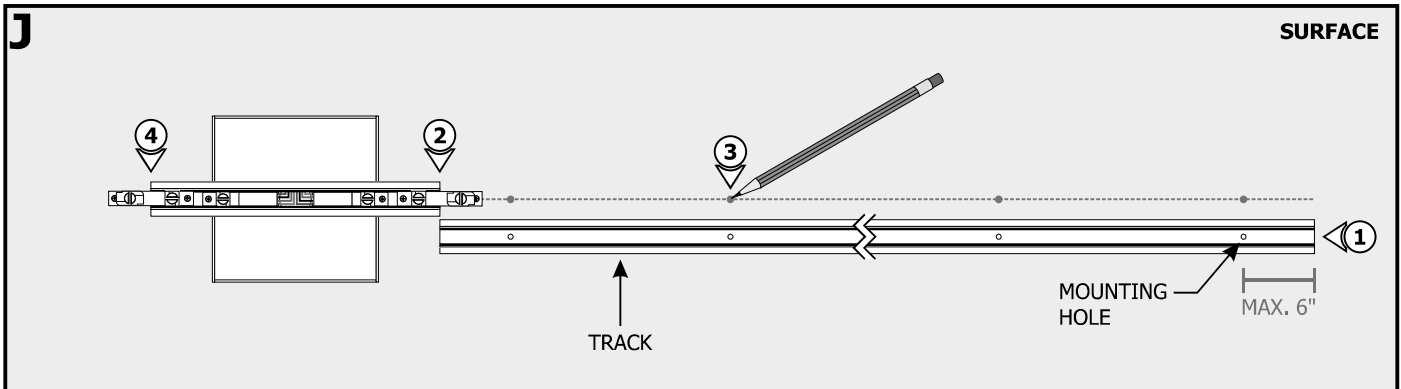
**16:** Secure the Center Power Feed to the crossbar with the two screws using a Phillips screw driver.

**NOTE:** The Center Power Feed must be flush with the drywall. Do not overtighten.

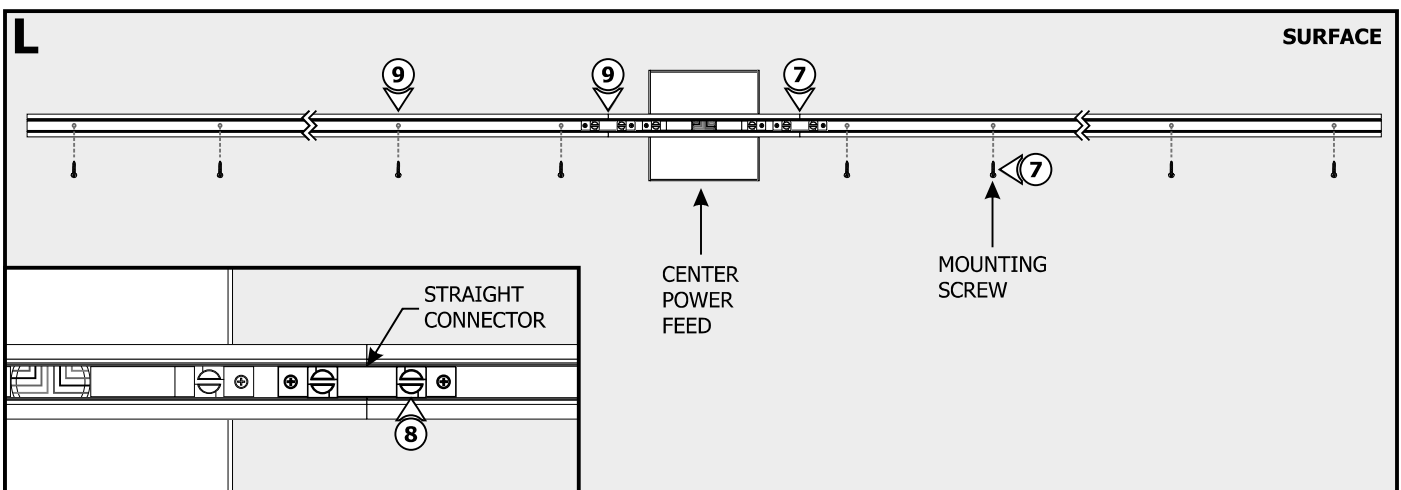
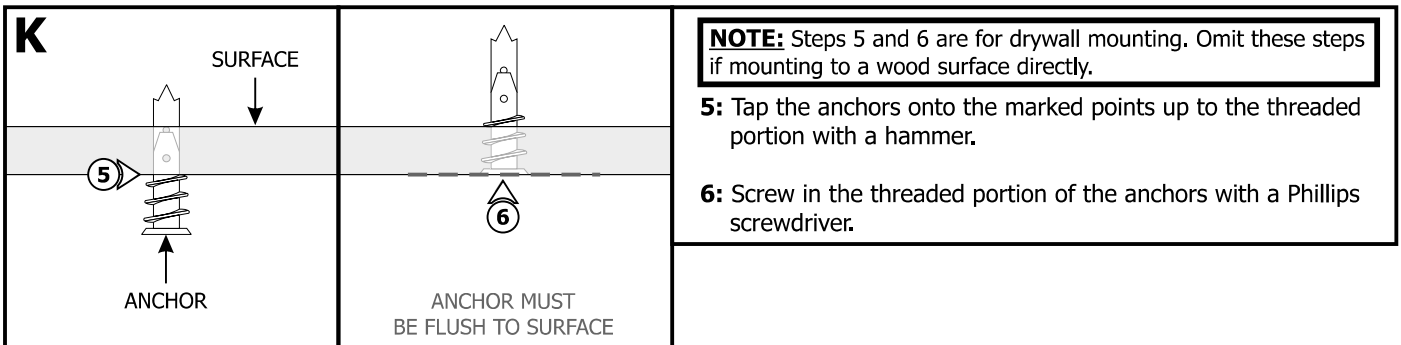
**H****I**

**17:** Place each canopy piece against the Center Power Feed and align the magnets on the back of the canopy pieces with the crossbar. The magnets on the back will secure the canopy in place.

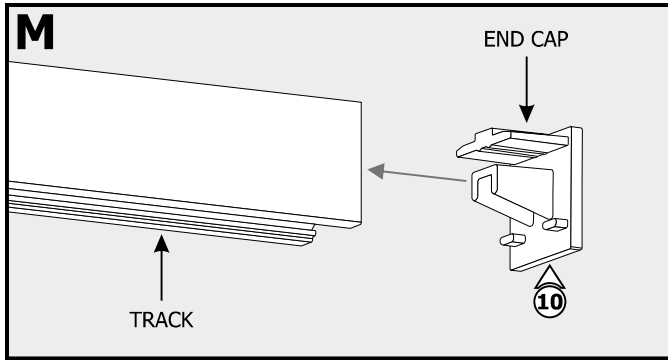
## Section Three: Install the Track



- 1:** Determine the desired length of the track. Measure and cut the track to desired length using a chop saw with high speed RPM. Clean the burrs at the end of the channel after drilling. Drill an additional mounting hole that is a maximum of 6" from the end of the track using a 11/64" drill bit.
- 2:** Align the end of the track with one end of the Center Power Feed.
- 3:** Mark the location of the track holes on the surface, ensure they are centered with the Center Power Feed.
- 4:** Repeat steps 1 through 3 for the other end of the Center Power Feed.

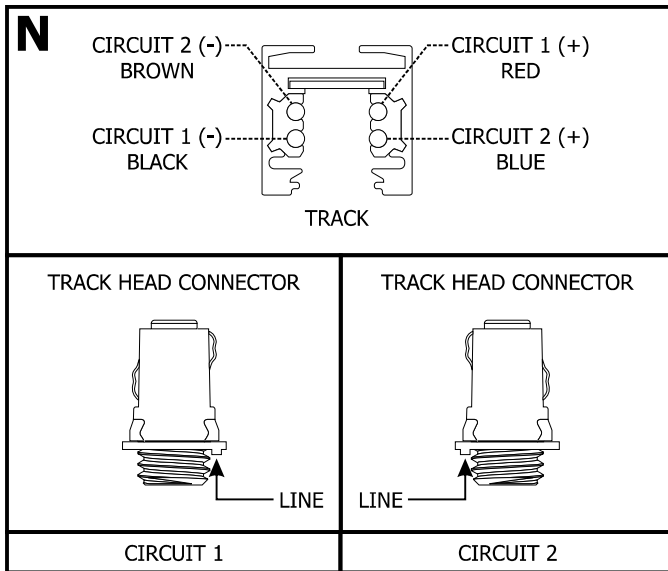


- 7:** Slide the track over the Straight Connector on the Center Power Feed. Secure the track to the anchors using the provided mounting screws.
- 8:** Tighten the slotted screw on the Straight Connector using a flat-head screwdriver to secure in place.
- 9:** Repeat steps 5 through 8 for the other end of the Center Power Feed.

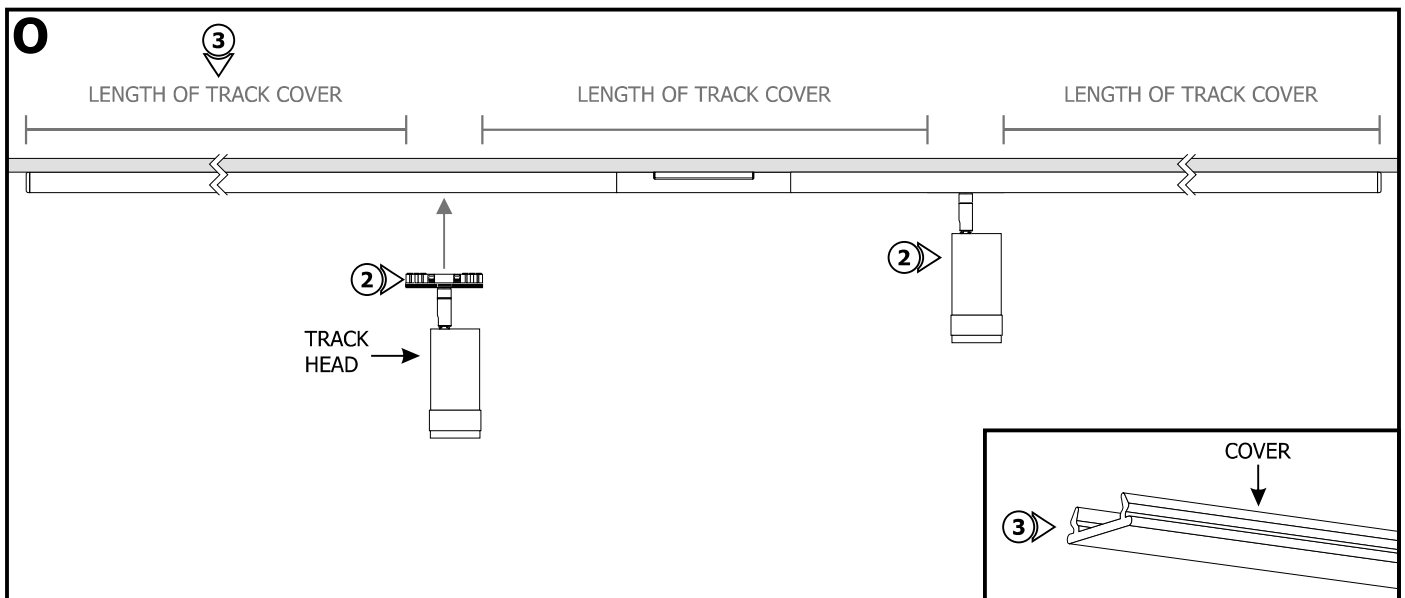


**10:** Push the end caps into the dead ends of the track.

## Section Four: Install Track Heads



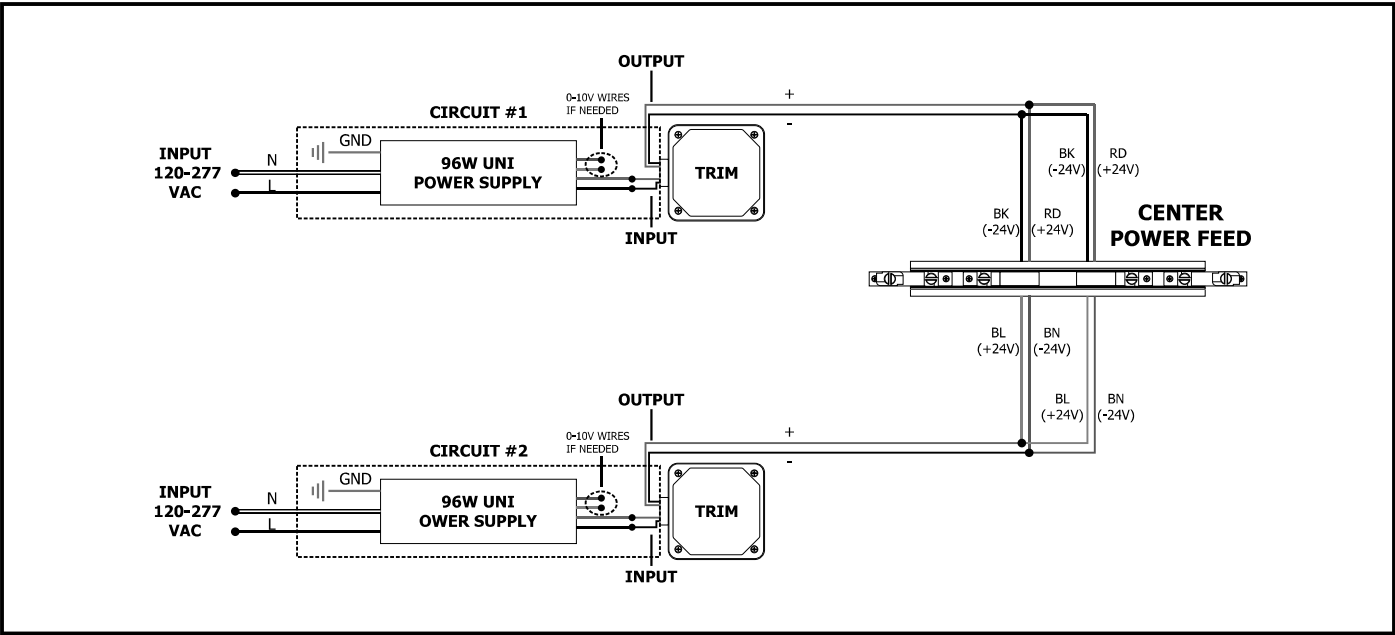
**1:** Identify the line on the Track Head Connector Cover that denotes Circuit 1 or Circuit 2. Choose Circuit 1 or Circuit 2 to power the track head fixture by rotating the track head connector 180 degrees.



**2:** Place the track head fixtures to the desired location (refer to the instructions provided with the track head fixture).

**3:** For a nice and uniform look, if desired, measure the distance among the track head fixtures or from the ends and cut the track cover to these lengths. Snap the covers onto the unused portions of the tracks.

# General Wiring Diagram for Single Two Circuit Center Feed



# General Wiring Diagram for Dual Two Circuit Center Feed

