

MINI STAR LINEAR LED OUTDOOR

24VDC 6 OR 9 WATTS PER FOOT IP66 DYNAMIC COLOR CHANGING SYSTEM

REV 09.01.21



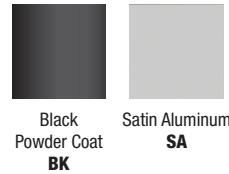
DESCRIPTION

Clean lines and a minimal profile combine to create the Mini Star Outdoor Linear LED fixture. The Mini Star is a simple yet technically advanced compact design which is aesthetic while able to deal with internal heat. Its special thermal convection design inside enables heat to be transferred rapidly and allows the fixture to be more compact than traditional light sources. This in combination with High Powered LEDs, make the Mini Star a premium light source. Can be Ceiling, floor, or wall mounted to provide a flood of light, and has wall washing functionality with its selection of lens: RGB has a 12°X53° Oval Beam Spread, and the RGB+W has 22° Round Beam or 24°X45° Oval Beam Spread options. The Mini Star Linear is manufactured with adjustable mounting clips that allow the fixture to be mounted in various outdoor applications. Link multiple fixtures to sync color effects. Single zone control not DMX addressable. Power and Control the Mini Star IP66 Rated fixture combines with a full touch controller and Universal (UNI) power supply (Sold Separately, See Pages 4 & 5). Controller is NOT outdoor rated, and shall be located at a remote indoor location. Multiple Mini Star RGB or RGB+W fixtures can be ganged together up to 100 watts before re-feeding.

ELECTRICAL

- Input Voltage: 24VDC, contains integrated DMX driver on board. All fixtures will function to a single address only
- Universal Power Supply (UNI) Remote Power Supply 120/277VAC-24VDC, Sold Separately.
SKU: **PSB-(60W or 96W)-UNI-24VDC-W**
- Class 2 Power Supply
- Power Consumption of 6 watts/ft for RGB, and 9 watts/ft for RGB+W
- LEDs/FT: 6 LEDs for RGB, and 6 LEDs for RGB + W
- Order in 4 Wattage/Length options, and gang multiple fixtures together, up to 100 watts before re-feeding
- Cable Connector: **OC-CFX-5CON-(12IN or 96IN)-W** (Sold Separately)
- Cord conductors can be ordered to gang multiple fixtures together for a watertight connection
- Dimming: DMX 512 Protocol Color Sync single zone non-addressable

FINISHES



FEATURES & BENEFITS

- 4 Wattage and 2 Length Options: 12W 24", and 24W 48" for RGB, and 18W 24", and 36W 48" for RGB+W (3000K)
- Controllable RGB (Red, Green, and Blue) LEDs, OR RGB+W (Red, Green and Blue, Plus White 3000K) LEDs
- Adjustable Mounting Clips: Innovative mounting clips are attached for Ground Level, Ceiling, or Wall mounting options, for Wall Grazing, Wall Washing, and general outdoor lighting applications
- Easy Installation: Push-In Water Tight Barrel Connectors
- Beam Spread: RGB has a 12°X53° Oval Spread, and the RGB+W has 22° Round Beam or 24°X45° Oval Beam Spread options.
- 2 Finish Options: Satin Aluminum or Black Powder Coated Finish

PHYSICAL

- Material: Low Copper Aluminum Die Casting with High Pure Aluminum Alloy Extrusion, High Weather Resistant Outdoor Powder Coated Finish, Tempered Optical Glass Diffuser 1.25" thick LED COB
- Sizes: **RGB - 12W24** (24" x 1.7" x 2"), and **24W48** (48" x 1.7" x 2")
RGB+W - 18W24 (24" x 1.7" x 2"), and **36W48** (48" x 1.7" x 2")
- Operating Temperature: -4°F to 113°F
- Average LED Life: 50,000 Hours

COMPLIANCE

- Class 2 Power Supply
- ETL Listed
- IP66 Wet Rated

WARRANTY

5 Year Pro-rated Warranty from Time of Purchase

System	Wattage & Length	Beam Spread	Color Temperature	Finish
MSLO-24V	18W24	22	RGBW	SA
MSLO-24V Mini Star Linear Outdoor 24VDC System	12W24 12 Watts, 24" (RGB Only) 18W24 18 Watts, 24" (RGB+W Only) 24W48 24 Watts, 48" (RGB Only) 36W48 36 Watts, 48" (RGB+W Only)	12X53 12°X53° Oval Beam Spread (RGB) 22 22° Beam Spread (RGB+W) 24X45 24°X45° Oval Beam Spread (RGB+W)	RGB Red, Green and Blue RGBW Red, Green, Blue and White (3000K)	BK Black Powder Coated SA Satin Aluminum

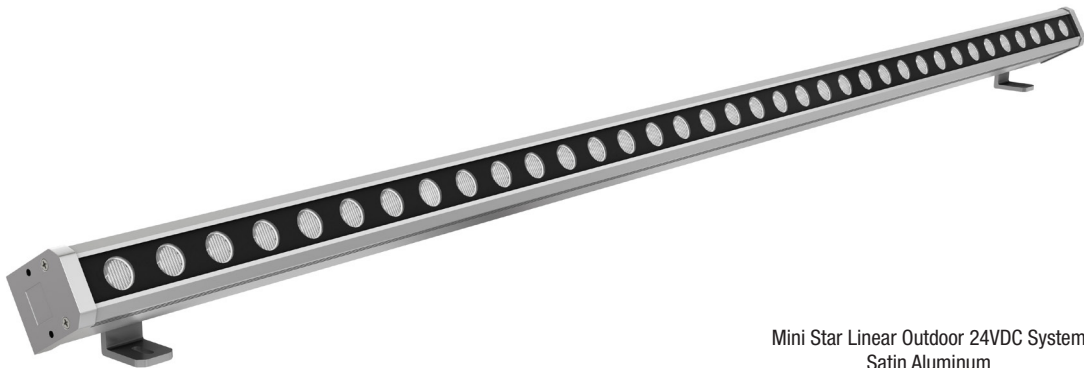
PROJECT	FIXTURE TYPE	DATE
---------	--------------	------

MINI STAR LINEAR LED OUTDOOR

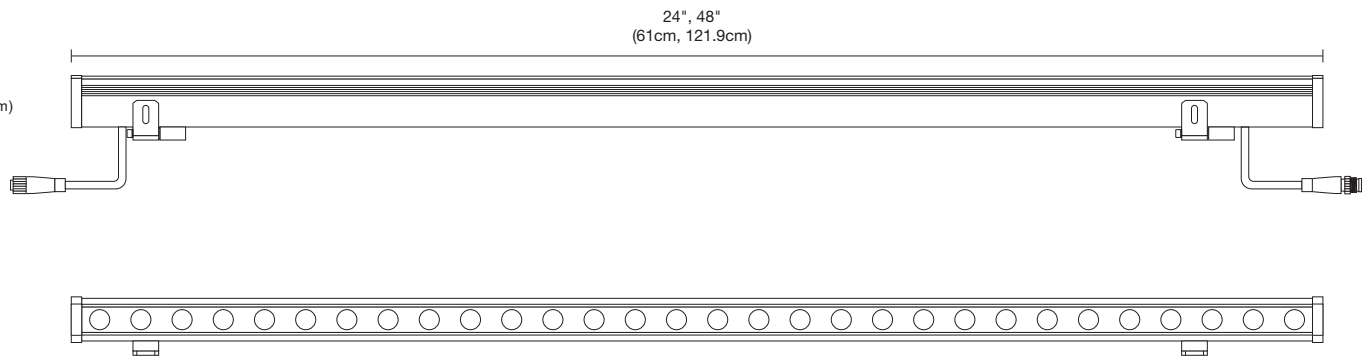
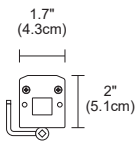
24VDC 6 OR 9 WATTS PER FOOT IP66 DYNAMIC COLOR CHANGING SYSTEM



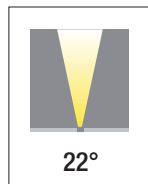
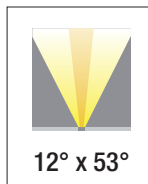
Mini Star Linear Outdoor 24VDC System
Black Powder Coated



Mini Star Linear Outdoor 24VDC System
Satin Aluminum



Nominal Beam Spread



PROJECT	FIXTURE TYPE	DATE
---------	--------------	------

MINI STAR LINEAR LED OUTDOOR

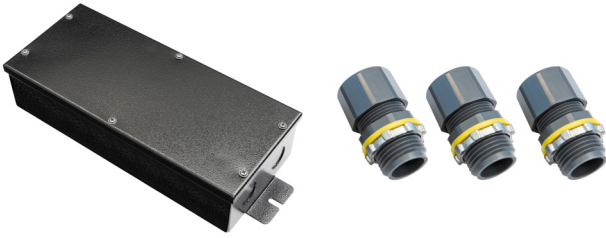
24VDC 6 OR 9 WATTS PER FOOT IP66 DYNAMIC COLOR CHANGING SYSTEM

REV 09.01.21

Components: Components for the Mini Star Linear Fixture

UNI POWER SUPPLY

Universal Power Supply: 120/277VAC-24VDC with Universal dimming ELV, Triac or 0-10V dimmers. 100-0% Flicker free dimming. Aluminum casing for optimal heat dissipation. Isolated output power per NEC and UL safety requirements. UL & ETL recognized/ listed, meets UL8750, 1310 requirement. Auto-reset; short circuit, overload and thermal protection. Class 2 power supply. Efficient, High power factor > 0.90. Efficiency > 84% Power Factor > 0.90. Case TC 90C° Max. Protection Input / Output Storage -30°C / +90°C Humidity 95% RH Max. Class 2 Power Supply Dimming ELV, Triac, 0-10V IP Rating IP20, IP67



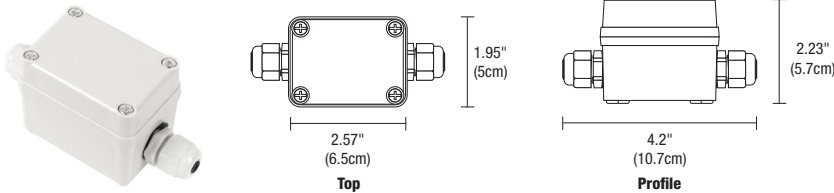
Con-1-2CORD-O Cord conductors included



Product	Wattage	Type	Voltage	Option
PSB	60W	UNI	24VDC	W
PSB Power Supply with Junction Box	60W 60 Watts 96W 96 Watts	UNI Uni Driver	24VDC 24VDC	W Wet Location

WET LOCATION JUNCTION BOX

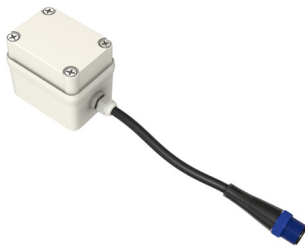
Wet-rated low voltage Splice Box with connectors.



Product	Type	Option
2RE	JBOX	W
2RE 2" Rectangle	JBOX Junction Box	W Wet Location

WET LOCATION JUNCTION BOX WITH 6" POWER CABLE

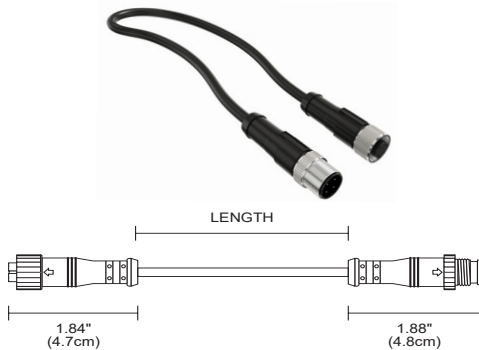
This watertight, multi-fixture Junction Box is especially designed for lighting in wet and damp locations. It is versatile, rugged and simple to install. The Junction Box comes standard with a 6" Flexible Cable providing easy, safe, and reliable connections for 24V low voltage luminaires. This box is approved for indoor and outdoor usage and complies with all the requirements of UL1241 and the National Electric Code.



Product	Canopy	Product	Size	Option
OC	2RE	5CON	6IN	W
OC Outdoor Cable	2RE 2" Rectangle	5CON 5 Pin Connector	6IN 6"	W Wet Location

WET LOCATION POWER/JUMPER CABLE

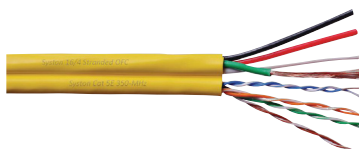
This Flexible Connector is designed to work with all of our Linear Outdoor Systems in outdoor damp and wet environments. This Flexible Connector is easy to install and configure, helping you create innovative lighting designs. Length 12" or 96",



Product	Type	Product	Size	Option
OC	CFX	5CON	12IN	W
OC Outdoor Cable	CFX Flexible Connector	5CON 5 Pin Connector	12IN 12" 96IN 96"	W Wet Location

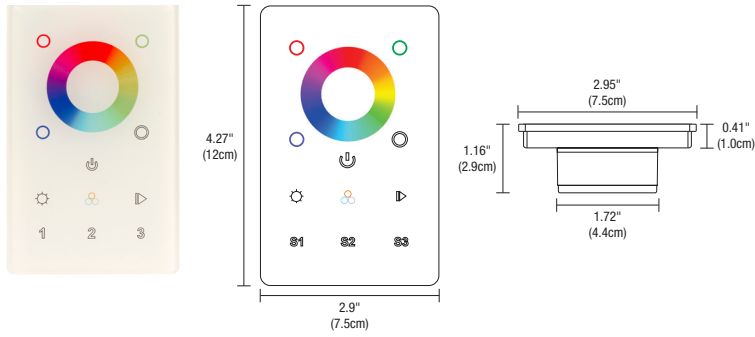
WET LOCATION CABLE PER FOOT

Our Wet Location, Cat5e 16 gauge 4 conductor cable is a durable and adaptable cable suitable for transmitting power, control, and switching to indoor and outdoor wet and damp environments (not for direct burial). Cable sold by the foot, simply specify the length (quantity) by the foot.



Product	Type
OC	CAT5-16-4
OC Outdoor Cable	CAT5-16-4 4 pair Cat5e with 4 16 gauge power wires

PROJECT	FIXTURE TYPE	DATE
---------	--------------	------



DESCRIPTION

Full touch controller offers fast and accurate color tone adjustment and independent brightness control. The 1 zone controller can adjust RGB and RGBW LEDs smoothly and accurately. Independent smooth dimming of each channel enables the controller to achieve millions of colors. For indoor applications only, and includes a Power Adapter to operate the controller.

APPLICATIONS

Indoor

POWER INPUT

120-277VAC

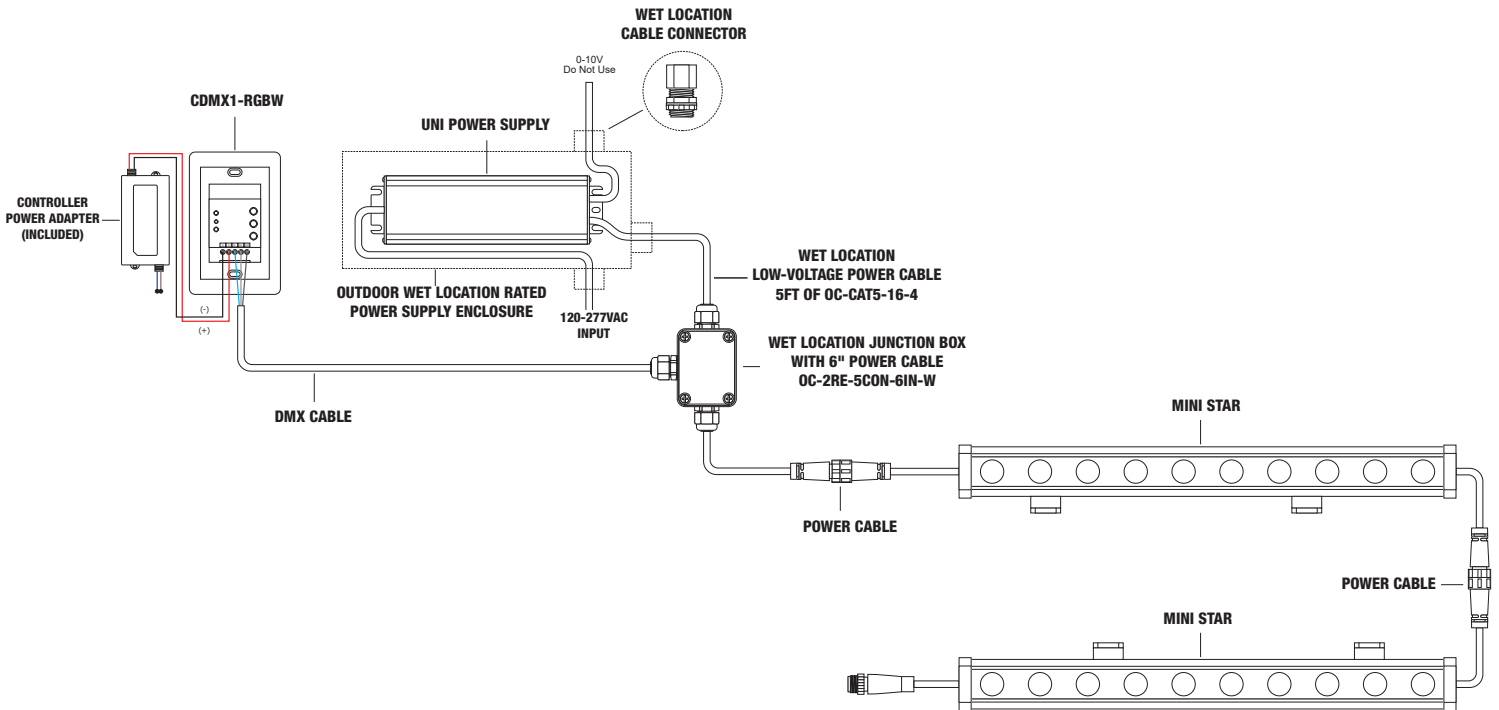
INSTALLATION

Fits in a single gang 2.5" deep junction box, not to be used with a multi gang box

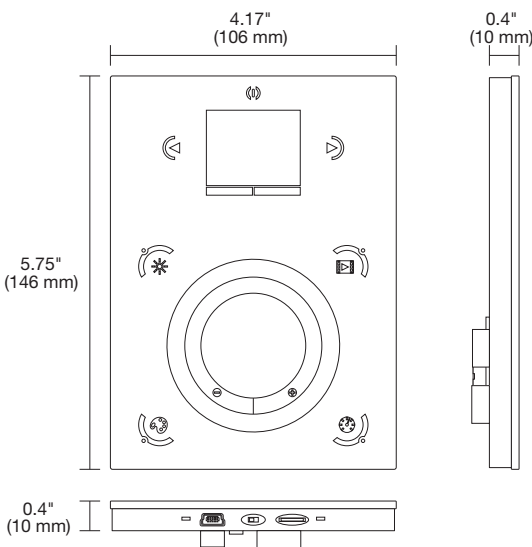
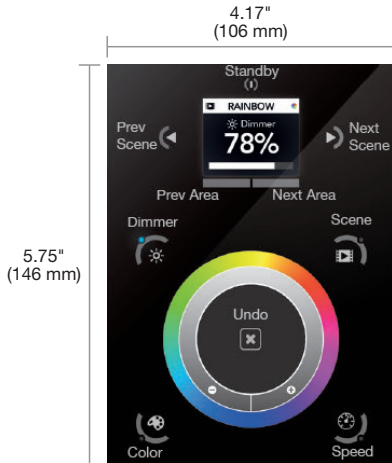
OUTPUT SIGNAL

USITT DMX 512 (1990)

Product	Type	Finish
CDMX1	RGBW	WH
CDMX1 DMX 1 Zone Touch Controller	RGBW RGB & RGBW	WH White



PROJECT		FIXTURE TYPE		DATE	
---------	--	--------------	--	------	--



DESCRIPTION

Full touch controller offers fast and accurate color tone adjustment and independent brightness control. The 10 zone controller can adjust RGB and RGBW LEDs smoothly and accurately. Independent smooth dimming of each channel enables the controller to achieve millions of colors. For indoor applications only, and includes a Power Adapter to operate the controller.

FEATURES AND BENEFITS

KEY FEATURES:

- Sleek glass design which sits 11mm from the wall
- Graphical color display to show selected environment
- Color/dimmer/speed palette
- Color temperature mixing
- Touch sensitive buttons. No mechanical parts
- Touch sensitive wheel allows for accurate color selection
- Multi-zone microSD memory
- Multi-room control with 500 scenes, 10 zones
- 1024 DMX channels. Control 340 RGB fixtures
- USB & Ethernet connectivity for programming and control
- RS232, Dry Contact Ports and an Infra Red input port
- Clock and calendar with Sunrise/Sunset triggering
- Network communication. Control lighting remotely
- Catalog of designs including black and white glass
- OEM customization of the color palette and logo
- Windows/Mac software to set dynamic colors/effects
- iPhone/iPad/Android remote and programming apps

APPLICATIONS

Indoor

POWER ADAPTER

9VDC 0.65A (included)

POWER INPUT

7VDC 0.6A

OUTPUT SIGNAL

DMX512 1,024 channels total

INPUT SIGNAL

Universal IR receiver (Sold Separately), RS232, Contact Closure, Live Computer Link, DMX512, WiFi

CONNECTIONS

USB, Ethernet, RS232, Clock, 8 dry contact ports, open drain output

MEMORY

microSD (32GB Max)

COMPUTER AND MOBILE DEVICE REQUIREMENTS

IPHONE/IPAD/ANDROID:

The controller may be used with any of the following apps: DMX Lightpad 3, Easy Remote and Arcolis may be downloaded from App Store or Google Play.

ESA PRO SOFTWARE (WINDOWS ONLY, TIMELINE AND MULTI-ZONE):

Windows ME, XP, Vista, 7 or 8 (32 bits and US 2.0, computer connection required for initial setup only.)

ESA2 SOFTWARE (WINDOWS/MAC, SINGLE ZONE):

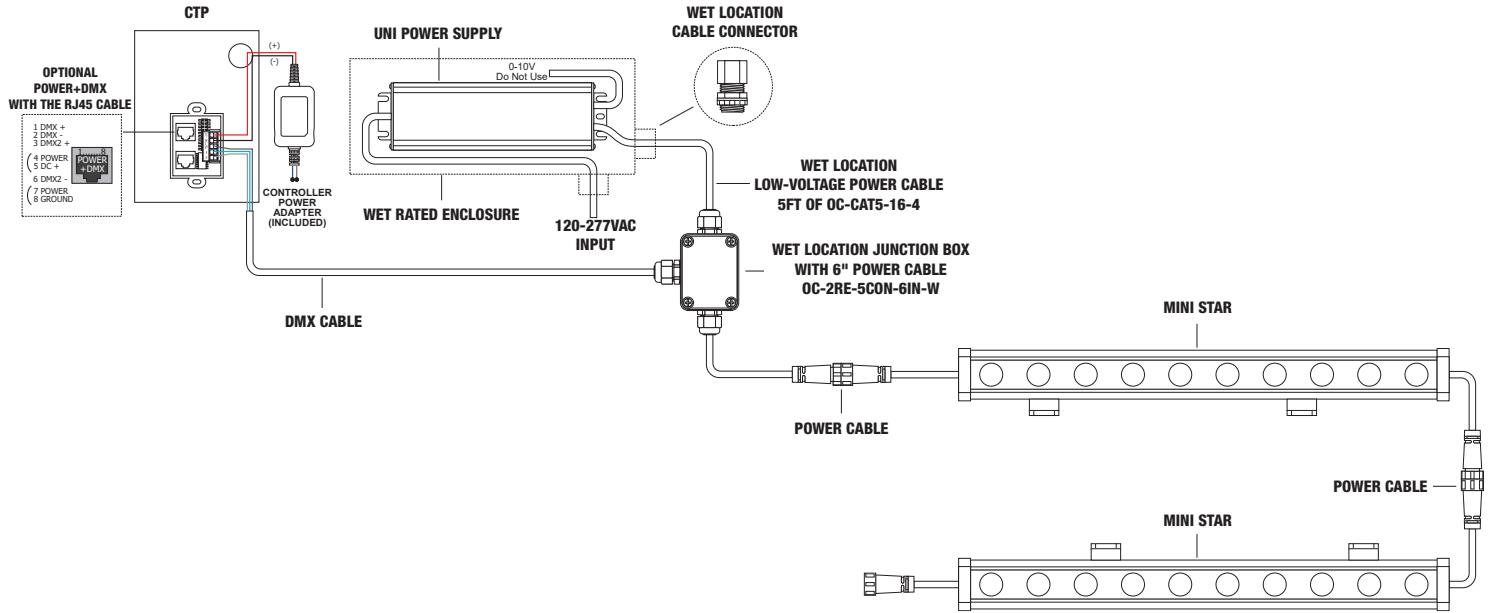
Windows ME, XP, Vista, 7 or 8

Mac OS X 10.7 (Lion), 10.8 (Mountain lion), 10.9 (Mavericks), 10.10 (Yosemite)

Product	Finish
CTP	BK
CTP Color Touch Screen Controller with Power Adapter	BK Black WH White

PROJECT	FIXTURE TYPE	DATE	
---------	--------------	------	--

RGB Wiring Diagram



PROJECT		FIXTURE TYPE		DATE	
---------	--	--------------	--	------	--