

OUTDOOR TRACK

DESIGNED BY GREGORY KAY | ASSEMBLED IN AMERICA | PATENT PENDING

REV 06.13.19



FEATURES & BENEFITS

- Offers the flexibility of 2-Circuit Track Lighting in an exterior environment
- Powder coat, marine-grade finish for use near the Ocean
- Uses 12VAC low voltage wiring without the need for conduit pipe
- Remote Power Supply, 12VAC up to 300 Watts or 40' before re-feeding
- Micro Surface Track Head rotates 360° and tilts 180°. Accepts 12V LED MR16 Lamp up to 8 Watts (PureEdge Lighting's SOL-Light is recommended) or 12V Halogen MR16 Lamp up to 50 Watts, sold separately. May be ordered with a machined Aluminum Snoot

FINISHES



APPLICATIONS

- Exterior or Wet Locations
- Patios, Backyards, marine-grade suitable for Ocean front applications, or Outside Restaurants and Bars

TRACK PARTS (SOLD SEPARATELY)

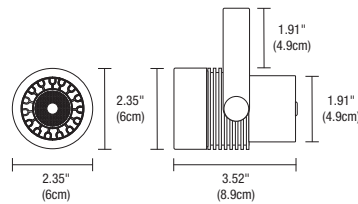
- Exterior Track
- 10 Gauge 3-Wire Cable
- Exterior Track Canopy Cover
- (2) Exterior Track End Caps (Included with Track)

TRANSFORMERS & COMPATIBLE DIMMERS (SOLD SEPARATELY)

- 300W (2x150W) Exterior Black Transformer
- Magnetic Low Voltage Dimmer

MICRO FIXTURE (LAMP SOLD SEPARATELY)

- **LED:** 12VAC MR16 7.5W SOL-Light Warm Dim 2700K or 3000K
- **Halogen:** 12VAC up to 50 Watts MR16



Product	Type	Finish
TX12	MICRO	BK
TX12 Track Exterior	MICRO Micro Track Head MICRO-SO Micro Track Head with Snoot	BK Black WH White

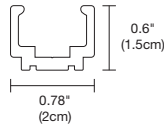
PROJECT	FIXTURE TYPE	DATE
---------	--------------	------

OUTDOOR TRACK

DESIGNED BY GREGORY KAY | ASSEMBLED IN AMERICA | PATENT PENDING

REV 06.13.19

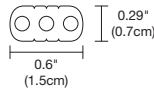
ACCESSORIES Exterior Track, order based on lighting design or as replacement parts



EXTERIOR TRACK

Exterior Track features an aluminum body with end caps (included). Available in 4' or 8' field cuttable lengths. Finishes available in Black or White. The Aluminum finish will not discolor from exposure to sunlight and weather.

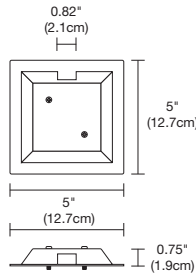
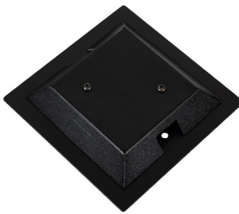
Product	Type	Nominal Size	Finish
TX12	SQ	4FT	BK
TX12 Track Exterior	SQ Square Track	4FT 4' 8FT 8'	BK Black WH White



10-GAUGE, 3-WIRE CABLE (PER FOOT)

Exterior Cable is a heavy-duty 10-Gauge, 3-Wire, 2-Circuit, allowing for longer runs at 12 volts with reduction of voltage-drop problems (sold separately). Use transformer booster tap if output falls below 10.4 volts. Order one extra foot per system, for power connections. UV stabilized and flame retardant. Can be installed above ground or buried. Insulation is self-sealing. Finishes available in Black or White. UL listed for wet locations. Order in 1" increments.

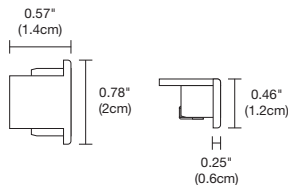
Product	Type	Finish
TX12	CB	BK
TX12 Track Exterior	CB Cable	BK Black WH White



EXTERIOR TRACK CANOPY COVER

Exterior Track Canopy Cover Box allows for a cleaner appearance at a corner or at a cable entry location. One end supplied open. Three knockouts also provided. Finishes available in Black or White.

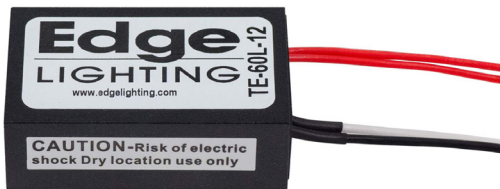
Product	Type	Finish
TX12	JBC-5SQ	BK
TX12 Track Exterior	JBC-5SQ J-Box Cover 5" Square Canopy Cover	BK Black WH White



EXTERIOR TRACK END CAPS (INCLUDED WITH TRACK)

Exterior Track End Caps provide a clean appearance at the end of a track run. Finishes available in Black or White. Two per track.

Product	Type	Finish
TX12	CA	BK
TX12 Track Exterior	CA End Cap	BK Black WH White

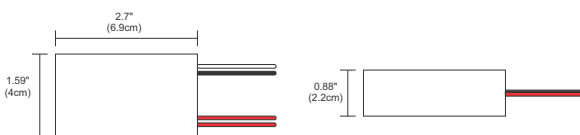


REMOTE 60W 12VAC POWER SUPPLY

TE-60L-12 60 Watt 12VAC Electronic Transformer converts 120 volt line voltage to 12 volts and features built-in short-circuit protection. The solid, lightweight remote power supply fits inside a standard electrical junction box behind a power feed canopy. Must be in accessible location or inside an electrical box. The single feed transformer is both 12 volt AC LED and halogen compatible.

- No load technology, works with both Halogen & LED AC loads
- Isolated output power per NEC and UL safety requirements
- UL recognized/listed Class 2 power supply, meet UL 2108 requirements
- Auto-reset; Short circuit, Overload and Thermal protection
- Soft start
- Dimmable

System	Power/Voltage Output
TE	60L-12
TE Transformer Electronic	60L-12 60 Watt 12 Volt LED and Halogen Only



PROJECT		FIXTURE TYPE		DATE	
---------	--	--------------	--	------	--

OUTDOOR TRANSFORMER

DESIGNED BY GREGORY KAY | ASSEMBLED IN AMERICA | PATENT PENDING

REV 06.13.19



DESCRIPTION

Magnetic Transformer total 300W, 2-Circuit, 2x150W with Booster Tap. Dimmable with any Magnetic Low Voltage Dimmer, by others as long as you cover dimmer's minimum load. The temperature is rated Class B (130°C). The load maximum operational temperature is 105°C. The enclosure is Black Powder Coated Steel, NEMA 3R rated. The wiring compartment has six knockout sized for 3/8" Screw Cable Connectors.

EXTERIOR APPLICATIONS

To avoid overheating the Power Supply, install it in a ventilated remote location where air flows. Maintain proper spacing among Power Supplies when multiple Power Supplies are installed in the same remote location.

POWER INPUT

120VAC, 60Hz

POWER OUTPUT

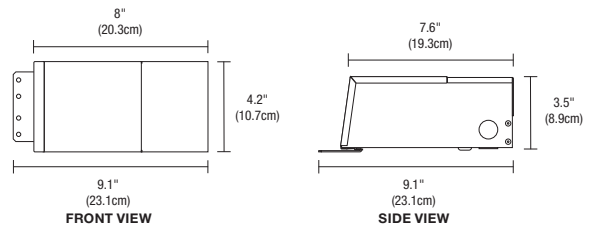
- **Without Load:** 12.4VAC
- **Fully Loaded:** 11.8VAC
- 2x150 Watts maximum
- Use Booster Tap when output voltage is under 10.4 Volts

DIMENSIONS

8" x 4.2" x 3.5"

DIMMER TYPE

Magnetic Low Voltage Dimmer, by others



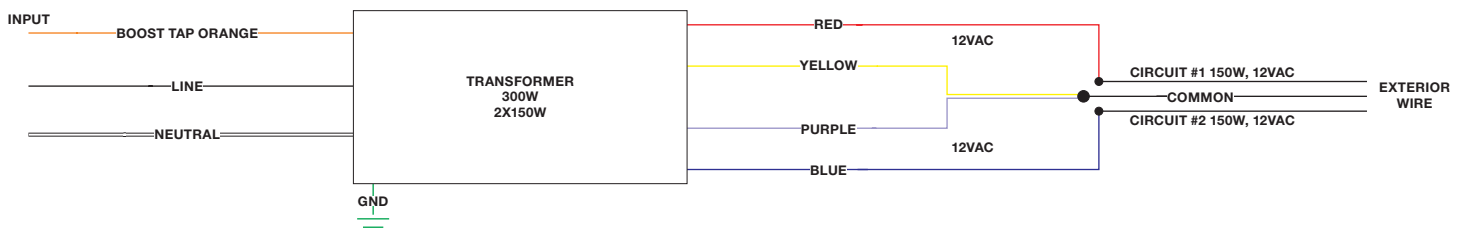
Product

EGP300P12AC

EGP300P12AC Exterior Transformer, two 150 Watt Circuits, 300 Watt with 12VAC with Booster Tap

WIRING DIAGRAM

Wiring Diagram for the EGP300P12AV, Exterior Black Powder Coated Steel Transformer



300W, 12VAC LOW VOLTAGE WIRE SIZE CHART (3% VOLTAGE DROP)

TOTAL CIRCUIT DISTANCE	UP TO 6'	7'-10'	11'-16'	17'-25'	26'-30'	40'-48'
WIRE SIZE	10 AWG	8 AWG	6 AWG	4 AWG	3 AWG	1 AWG

PROJECT		FIXTURE TYPE		DATE	
---------	--	--------------	--	------	--



SOL-Light® Warm Dim

MR16 12V LED LAMP GU5.3 SERIES



REV 06.13.19



DESCRIPTION

Unlike standard LEDs, SOL-Light Warm Dim LEDs are designed to shift from full brightness (2700K or 3000K) to a warmer Color Temperature (1800K) as they are dimmed down, replicating the effects of Halogen light sources with a CRI of 95+ and a High R9 of 85+. The lamp is a direct replacement for a 12VAC, 50 watt Halogen with 24° (410 Lumens) or 36° (450 Lumens) Beam Spreads. For use in Track Lighting, recessed down lights, and other indoor and outdoor applications. 30,000 hour rated lamp life. Suitable for enclosed fixtures.

FEATURES

- **Two Color Temperatures:** 2700K and 3000K. Both dim to warm 1800K
- Direct replacement for inefficient Halogen Lamps
- GU5.3 Base MR16
- High 97 CRI and high R9 85+
- Low blue emission for healthy vision
- Zero ultraviolet emission, won't fade colors
- Beam Angles 24° or 36°
- 30,000 Hours rating

APPLICATIONS

Track and Recessed Lighting, Residential, Hospitality, Museum & Gallery, Track Lighting, Desk, and Outdoor

LED LAMPING


7.73 Watts at up to 532 Lumens at 3000K, two Color Temperatures at 2700K or 3000K (warm dims to 1800K), 97 CRI, R9-85, Rg: 101, Rf: 94, Input Voltage 12V, Max. TC 90° C, Ambient Temperature range -30° to 35° C, Power Factor .92, Inrush Cycle to <1 amp

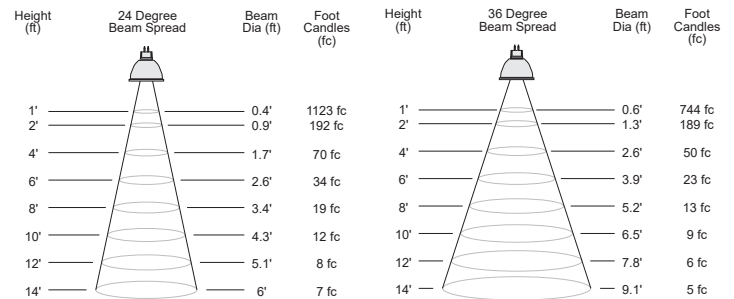
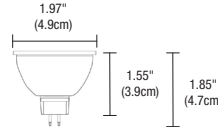
DIMMING

- Phase and Power Dimmable, Percent of Flicker <1%
- Compatible with 12VAC LED Electronic Low-Voltage (use ELV dimmer also called "trailing-edge", or "reverse phase" dimmer) and Magnetic Low-Voltage Transformers (use MLV dimmer also called "leading-edge" or "forward-phase" dimmer)

WARRANTY / LABELS

3 years/30,000 hour warranty
Title 24 Compliant, low flicker <1% CE, UL, NOM

Designed & Powered by 



MODEL #	INPUT VOLTAGE	CCT	BEAM ANGLE	LUMENS	LUMENS PER WATT	CRI	WATTAGE	CASE FINISH
MR16-12V-8W-NF-27KWD-SL	12V	2700K dims to 1800K	24°	390 lm	50	97	7.73W	Silver
MR16-12V-8W-FL-27KWD-SL	12V	2700K dims to 1800K	36°	427 lm	55	97	7.73W	Silver
MR16-12V-8W-NF-30KWD-SL	12V	3000K dims to 1800K	24°	410 lm	53	97	7.73W	Silver
MR16-12V-8W-FL-30KWD-SL	12V	3000K dims to 1800K	36°	450 lm	58	97	7.73W	Silver

Product	Base/Voltage	Wattage	Beam Spread Lens	Color Temperature	Case Finish
MR16	12V	8W	NF	30KWD	SL
MR16 MR16 Reflector	12V GU5.3 12VAC	8W 8 Watts	NF 24° Narrow Flood Lens FL 36° Flood Lens	27KWD 2700K Warm Dim 30KWD 3000K Warm Dim	SL Silver

PROJECT	FIXTURE TYPE	DATE
---------	--------------	------



DESCRIPTION

Soraa Vivid LED MR16 Lamps feature a choice of 10°, 25°, or 36° Beam Spreads and a choice of 2700K or 3000K Color Temperatures. Works as a 50W Halogen replacement for fully enclosed exterior fixtures. Exceptional beam control with smooth, uniform beams. Single light source provides a single, crisp shadow. Dimmable and flicker free, No UV or IR.

OUTPUT RANGE

1210-6000 CBCP, 390-490 Lumens

ENERGY EFFICIENCY

Track and Recessed Lighting, Residential, Hospitality, Museum & Gallery, Track Lighting, Desk, and Outdoor

LED LAMPING

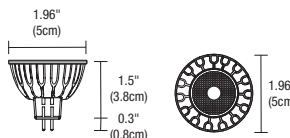
Rated Lifetime of 35,000 Hours; 85% more efficient than Halogen Lamps

HIGHLY COMPATIBLE

Thermally and geometrically compatible with standard fixtures. Suitable for fully enclosed fixtures per UL 1993, and suitable for wet locations per UL. Work with trailing edge and leading edge cut dimmers, 12VAC Magnetic and Electronic Transformers, and 12VDC Transformers


WARRANTY / LABELS

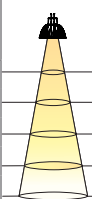
3 year manufacturer's warranty is included. UL/CUL Class 2 and Non-Class 2, FCC Title 47 Part 15B, RoHS, CE





27K LAMP SPECIFICATIONS								
ORDERING CODE	WATTAGE	COLOR TEMPERATURE	CRI	BEAM ANGLE	LUMENS	LUMENS PER WATT	CBCP	HALOGEN EQUIVALENT
SM16-07-10D-927-03	7.5W	2700K	95	10°	390	52	5710	50W
SM16-07-25D-927-03	7.5W	2700K	95	25°	410	55	2260	50W
SM16-07-36D-927-03	7.5W	2700K	95	36°	410	55	1070	50W

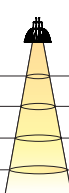
27K LAMP SPECIFICATIONS								
ORDERING CODE	WATTAGE	COLOR TEMPERATURE	CRI	BEAM ANGLE	LUMENS	LUMENS PER WATT	CBCP	HALOGEN EQUIVALENT
SM16-07-10D-927-03	7.5W	2700K	95	10°	390	52	5710	50W
SM16-07-25D-927-03	7.5W	2700K	95	25°	410	55	2260	50W
SM16-07-36D-927-03	7.5W	2700K	95	36°	410	55	1070	50W


SM16-07-10D-927-03				
2700K, Narrow Flood 10°				
7.5W = 50W Halogen Equivalent				
390 Total Lumens		52 Lumens Per Watt		
CBCP 5710				
FT		BEAM DIA 50% CBCP (FT)	FIELD DIA 10% CBCP (FT)	FOOT CANDLE
3'		0.5	1.1	634
6'		1.0	2.1	160
9'		1.6	3.2	69
12'		2.1	4.2	40
15'		2.6	5.3	23

SM16-07-25D-927-03				
2700K, Narrow Flood 25°				
7.5W = 50W Halogen Equivalent				
410 Total Lumens		55 Lumens Per Watt		
CBCP 2260				
FT		BEAM DIA 50% CBCP (FT)	FIELD DIA 10% CBCP (FT)	FOOT CANDLE
3'		1.3	2.2	248
6'		2.7	4.4	63
9'		4.0	6.6	27
12'		5.3	8.7	16
15'		6.7	10.9	9

SM16-07-36D-927-03				
2700K, Narrow Flood 36°				
7.5W = 50W Halogen Equivalent				
410 Total Lumens		55 Lumens Per Watt		
CBCP 1070				
FT		BEAM DIA 50% CBCP (FT)	FIELD DIA 10% CBCP (FT)	FOOT CANDLE
3'		1.9	3.3	118
6'		3.9	6.5	30
9'		5.8	9.8	13
12'		7.8	13.0	7
15'		9.7	16.3	4

SM16-07-10D-930-03				
3000K, Narrow Flood 10°				
7.5W = 50W Halogen Equivalent				
410 Total Lumens		55 Lumens Per Watt		
CBCP 6000				
FT		BEAM DIA 50% CBCP (FT)	FIELD DIA 10% CBCP (FT)	FOOT CANDLE
3'		0.5	1.1	666
6'		1.0	2.1	168
9'		1.6	3.2	72
12'		2.1	4.2	42
15'		2.6	5.3	24

SM16-07-25D-930-03				
3000K, Narrow Flood 25°				
7.5W = 50W Halogen Equivalent				
435 Total Lumens		58 Lumens Per Watt		
CBCP 2400				
FT		BEAM DIA 50% CBCP (FT)	FIELD DIA 10% CBCP (FT)	FOOT CANDLE
3'		1.3	2.2	266
6'		2.7	4.4	67
9'		4.0	6.6	29
12'		5.3	8.7	16
15'		6.7	10.9	10

SM16-07-36D-930-03				
3000K, Narrow Flood 36°				
7.5W = 50W Halogen Equivalent				
435 Total Lumens			58 Lumens Per Watt	
CBCP 1130				
FT		BEAM DIA 50% CBCP (FT)	FIELD DIA 10% CBCP (FT)	FOOT CANDLE
3'		1.9	3.3	125
6'		3.9	6.5	30
9'		5.8	9.8	14
12'		7.8	13.0	8
15'		9.7	16.3	4

PROJECT		FIXTURE TYPE		DATE	
---------	--	--------------	--	------	--