

An architectural profile reminiscent of beautifully classic roof lines delivers significant light output in this modern LED wall sconce suitable for both indoor and outdoor applications. The Pitch Single's die-cast metal body houses powerful LED light sources that create visual appeal as light cascades down along a wall.

High quality LM80-tested LEDs

for consistent long-life performance and color

Outstanding protection against the elements:

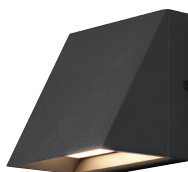
- Powder coat finishes
- Stainless Steel mounting hardware
- Impact-resistant, UV stabilized frosted acrylic lensing

Can be mounted for up lighting or down lighting

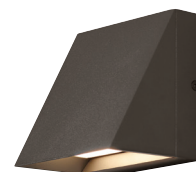
SPECIFICATIONS

DELIVERED LUMENS	822.6
WATTS	26.1
VOLTAGE	120V, 277V
DIMMING	ELV
LIGHT DISTRIBUTION	Symmetric
MOUNTING OPTIONS	Downlight or Uplight
CCT	2700K, 3000K
CRI	80+
COLOR BINNING	3 Step
BUG RATING	B1-U0-G0
DARK SKY	Compliant (Downlight)
WET LISTED	IP65
GENERAL LISTING	ETL
CALIFORNIA TITLE 24	Can be used to comply with CEC 2016 Title 24 Part 6 for outdoor use. Registration with CEC Appliance Database not required.
START TEMP	-30°C
FIELD SERVICEABLE LED	No
CONSTRUCTION	Aluminum
HARDWARE	Stainless Steel
FINISH	Powder Coat
LED LIFETIME	L70; 70,000 Hours
WARRANTY*	5 Years
WEIGHT	1.2 lbs.

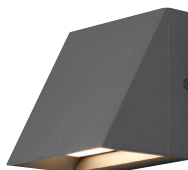
* Visit techlighting.com for specific warranty limitations and details.



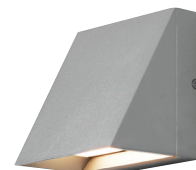
PITCH SINGLE
shown in black



PITCH SINGLE
shown in bronze



PITCH SINGLE
shown in charcoal

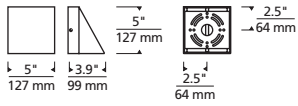


PITCH SINGLE
shown in silver

ORDERING INFORMATION

700WSPIT	SIZE	FINISH	LAMP
S	SINGLE	B BLACK	-LED827 LED 80 CRI, 2700K 120V
		Z BRONZE	-LED827277 LED 80 CRI, 2700K 277V
		H CHARCOAL	-LED830 LED 80 CRI, 3000K 120V
		I SILVER	-LED830277 LED 80 CRI, 3000K 277V

PITCH SINGLE WALL SCONCE



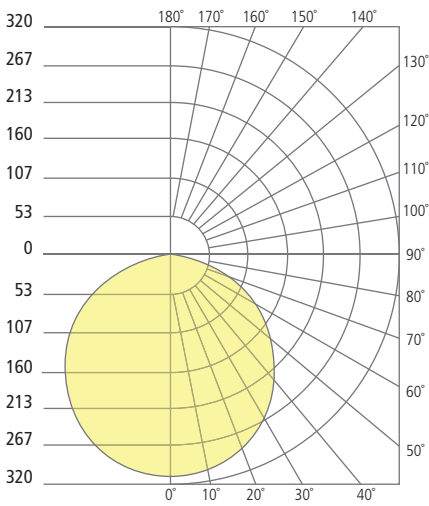
Pitch Single

PHOTOMETRICS*

*For latest photometrics, please visit www.techlighting.com/OUTDOOR

PITCH SINGLE

Total Lumen Output: 822.6
 Total Power: 26.2
 Luminaire Efficacy: 31.4
 Color Temp: 3000K
 CRI: 80+
 BUG Rating: B1-U0-G0



PROJECT INFO

FIXTURE TYPE & QUANTITY

JOB NAME & INFO

NOTES



© 2020 Tech Lighting, L.L.C. All rights reserved. The "Tech Lighting" graphic is a registered trademark. Tech Lighting reserves the right to change specifications for product improvements without notification.