

In dramatic contrast to the die-cast metal body, two symmetrical reveals cut from a solid piece of optically pure acrylic adorn the top and bottom of the Voto wall sconce. Beautiful LED light pours from the top and bottom of the thick-cut acrylic to provide ample illumination. Also available as a downlight or uplight to meet the needs of all outdoor applications.

High quality LM80-tested LEDs

for consistent long-life performance and color

Outstanding protection against the elements:

- Marine-grade powder coat finishes
- Stainless Steel mounting hardware
- Impact-resistant, UV stabilized frosted acrylic lensing

Up light and down light option

SPECIFICATIONS

DELIVERED LUMENS	909.1 Up-Downlight / 538.2 Downlight
WATTS	19.9 Up-Downlight / 11.5 Downlight
VOLTAGE	Universal 120-277V, with integral transient 2.5kV surge protection (driver)
DIMMING	0-10, ELV
LIGHT DISTRIBUTION	Symmetric Up/Down Lighting, or Down Only
MOUNTING OPTIONS	Wall
PERFORMANCE OPTIONS	Surge Protector
CCT	2700K, 3000K or 4000K
CRI	80+
COLOR BINNING	3 Step
BUG RATING	Up-Downlight B0-U3-G1 / Downlight B0-U2-G0
DARK SKY	Compliant (Downlight)
WET LISTED	IP65
GENERAL LISTING	ETL
CALIFORNIA TITLE 24	Can be used to comply with CEC 2016 Title 24 Part 6 for outdoor use. Registration with CEC Appliance Database not required.
START TEMP	-30°C
FIELD SERVICEABLE LED	Yes
CONSTRUCTION	Aluminum
HARDWARE	Stainless Steel
FINISH	Marine Grade Powder Coat
LED LIFETIME	L70; 70,000 Hours
WARRANTY*	5 Years
WEIGHT	7.2 lbs.

* Visit techlighting.com for specific warranty limitations and details.

ORDERING INFORMATION

7000WVOT	CRI/CCT	LENGTH	FINISH	FUNCTION*	VOLTAGE	DISTRIBUTION	OPTIONS
	827 80 CRI, 2700K	6 6"	Z BRONZE	DO DOWNLIGHT ONLY	UNV 120V-277V	S SYMMETRIC	NONE
	830 80 CRI, 3000K		H CHARCOAL	UD UPLIGHT /DOWNLIGHT			SP SURGE PROTECTION
	840 80 CRI, 4000K						

*DOWNLIGHT - 9W/850 LUMENS; UP & DOWNLIGHT - 18W/1500 LUMENS



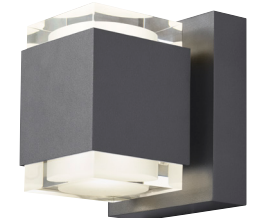
VOTO 6, DOWN ONLY
shown in bronze



VOTO 6, DOWN ONLY
shown in charcoal

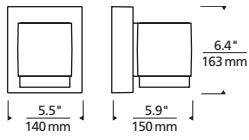


VOTO 6, UP/DOWN
shown in bronze

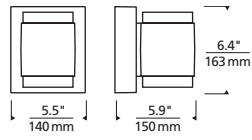


VOTO 6, UP/DOWN
shown in charcoal

VOTO 6 WALL SCNCE



Voto Small, Down Only



Voto Small, Up/Down

PHOTOMETRICS*

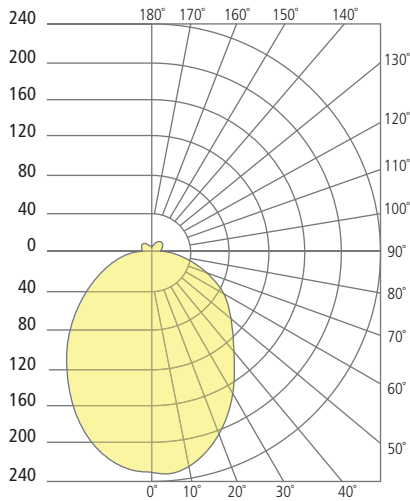
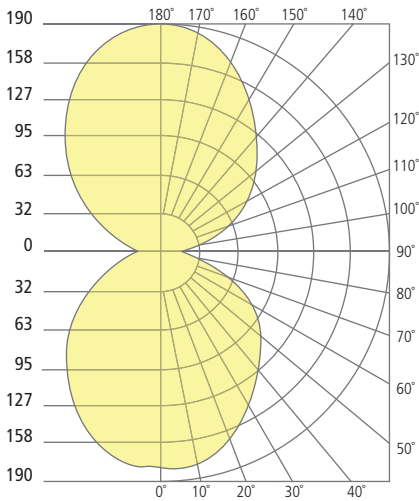
*For latest photometrics, please visit www.techlighting.com/OUTDOOR

VOTO 6 UP/DOWN

Total Lumen Output: 909
 Total Power: 19.9
 Luminaire Efficacy: 45.6
 Color Temp: 4000K
 CRI: 80+
 BUG Rating: B0-U3-G1

VOTO 6 DOWN

Total Lumen Output: 538.2
 Total Power: 11.5
 Luminaire Efficacy: 46.6
 Color Temp: 4000K
 CRI: 80+
 BUG Rating: B0-U2-G0



PROJECT INFO

FIXTURE TYPE & QUANTITY

JOB NAME & INFO

NOTES



GENERATION BRANDS

7400 Linder Avenue, Skokie, Illinois 60077

T 847.410.4400 F 847.410.4500



© 2016 Tech Lighting, L.L.C. All rights reserved. The "Tech Lighting" graphic is a registered trademark of Tech Lighting, L.L.C. Tech Lighting reserves the right to change specifications for product improvements without notification.

In dramatic contrast to the die-cast metal body, two symmetrical reveals cut from a solid piece of optically pure acrylic adorn the top and bottom of the Voto wall sconce. Beautiful LED light pours from the top and bottom of the thick-cut acrylic to provide ample illumination. Also available as a downlight or uplight to meet the needs of all outdoor applications.

High quality LM80-tested LEDs

for consistent long-life performance and color

Outstanding protection against the elements:

- Marine-grade powder coat finishes
- Stainless Steel mounting hardware
- Impact-resistant, UV stabilized frosted acrylic lensing

Up light and down light option

SPECIFICATIONS

DELIVERED LUMENS	1394 Up-Downlight / 672.5 Downlight
WATTS	27.8 Up-Downlight / 14.2 Downlight
VOLTAGE	Universal 120-277V, with integral transient 2.5kV surge protection (driver)
DIMMING	0-10, ELV
LIGHT DISTRIBUTION	Symmetric Up/Down Lighting, or Down Only
MOUNTING OPTIONS	Wall
PERFORMANCE OPTIONS	Surge Protector
CCT	3000K or 4000K
CRI	80+
COLOR BINNING	3 Step
BUG RATING	Up-Downlight B0-U4-G1 / Downlight B0-U2-G1
DARK SKY	Compliant (Downlight)
WET LISTED	IP65
GENERAL LISTING	ETL
CALIFORNIA TITLE 24	Can be used to comply with CEC 2016 Title 24 Part 6 for outdoor use. Registration with CEC Appliance Database not required.
START TEMP	-30°C
FIELD SERVICEABLE LED	Yes
CONSTRUCTION	Aluminum
HARDWARE	Stainless Steel
FINISH	Marine Grade Powder Coat
LED LIFETIME	L70; 70,000 Hours
WARRANTY*	5 Years
WEIGHT	9.6 lbs.

* Visit techlighting.com for specific warranty limitations and details.



VOTO 8, DOWN ONLY
shown in bronze



VOTO 8, DOWN ONLY
shown in charcoal



VOTO 8, UP/DOWN
shown in bronze



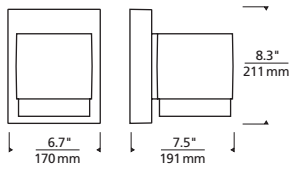
VOTO 8, UP/DOWN
shown in charcoal

ORDERING INFORMATION

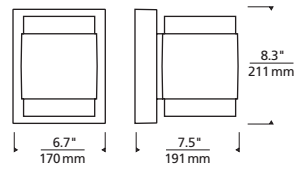
7000WVOT	CRI/CCT	LENGTH	FINISH	FUNCTION*	VOLTAGE	DISTRIBUTION	OPTIONS
	827 80 CRI, 2700K	8 8"	Z BRONZE	DO DOWNLIGHT ONLY	UNV 120V-277V	S SYMMETRIC	NONE
	830 80 CRI, 3000K		H CHARCOAL	UD UPLIGHT /DOWNLIGHT			SP SURGE PROTECTION
	840 80 CRI, 4000K						

*DOWNLIGHT - 9W/850 LUMENS; UP & DOWNLIGHT - 18W/1500 LUMENS

VOTO 8 WALL SCONCE



Voto Large, Down Only



Voto Large, Up/Down

PHOTOMETRICS*

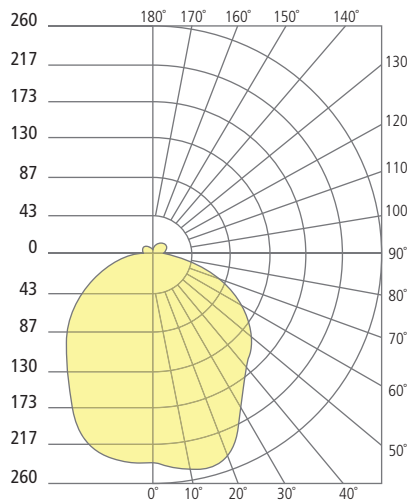
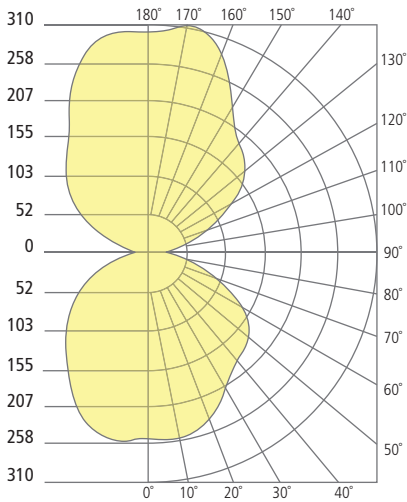
*For latest photometrics, please visit www.techlighting.com/OUTDOOR

VOTO 8 UP/DOWN

Total Lumen Output: 1394
 Total Power: 27.8
 Luminaire Efficacy: 50
 Color Temp: 4000K
 CRI: 80+
 BUG Rating: B0-U4-G1

VOTO 8 DOWN

Total Lumen Output: 672.5
 Total Power: 14.2
 Luminaire Efficacy: 47
 Color Temp: 3000K
 CRI: 80+
 BUG Rating: B0-U2-G1



PROJECT INFO

FIXTURE TYPE & QUANTITY

JOB NAME & INFO

NOTES



GENERATION BRANDS
 7400 Linder Avenue, Skokie, Illinois 60077
 T 847.410.4400 F 847.410.4500



© 2016 Tech Lighting, L.L.C. All rights reserved. The "Tech Lighting" graphic is a registered trademark of Tech Lighting, L.L.C. Tech Lighting reserves the right to change specifications for product improvements without notification.