

Nyra Linear Suspension

700LSNYR

1.0

VISUAL COMFORT & Co.

MODERN COLLECTION

GENERAL PRODUCT INFORMATION:

This product is suitable for damp locations.

These fixtures are intended to be installed utilizing NEC compliant junction boxes.

This product can be dimmed with most ELV or TRIAC dimmers.

This instruction shows a typical installation.



CAUTION - RISK OF FIRE

This product must be installed in accordance with the applicable installation code by a person familiar with the construction and operation of the product and the hazards involved.

Use minimum 90°c supply conductors.

Two Person Installation Recommended

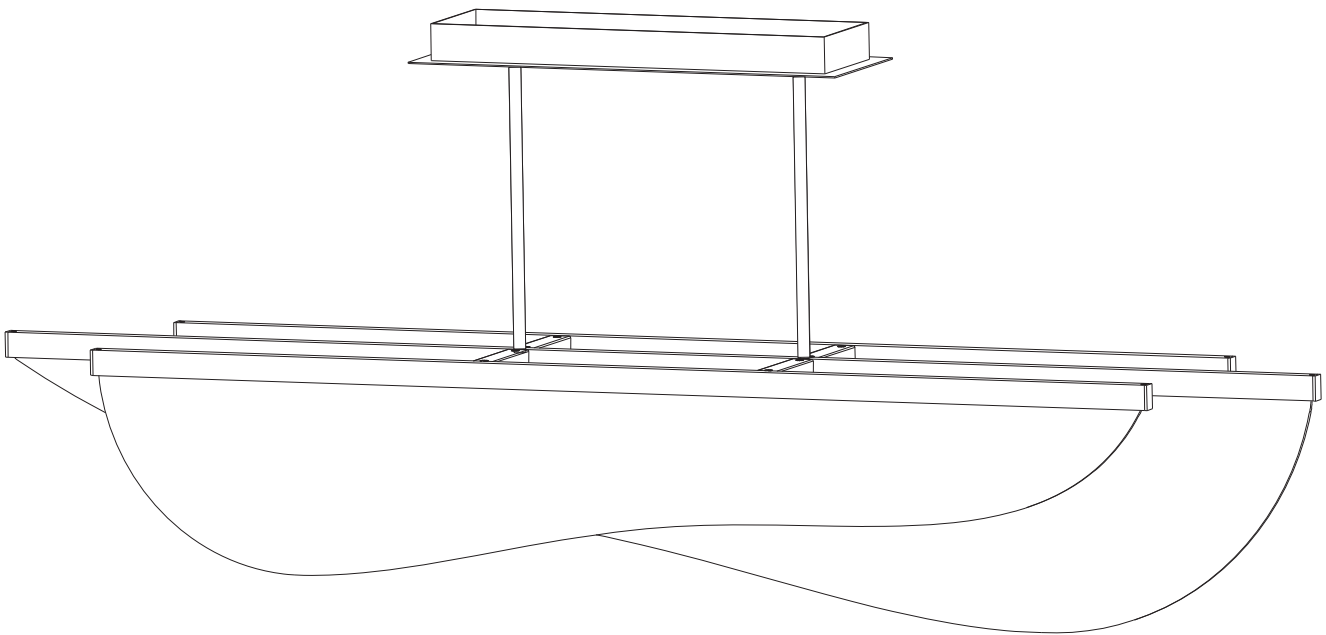
VISUAL COMFORT & Co.

7400 Linder Ave, Skokie, IL 16077

800.969.3347

www.visualcomfort.com

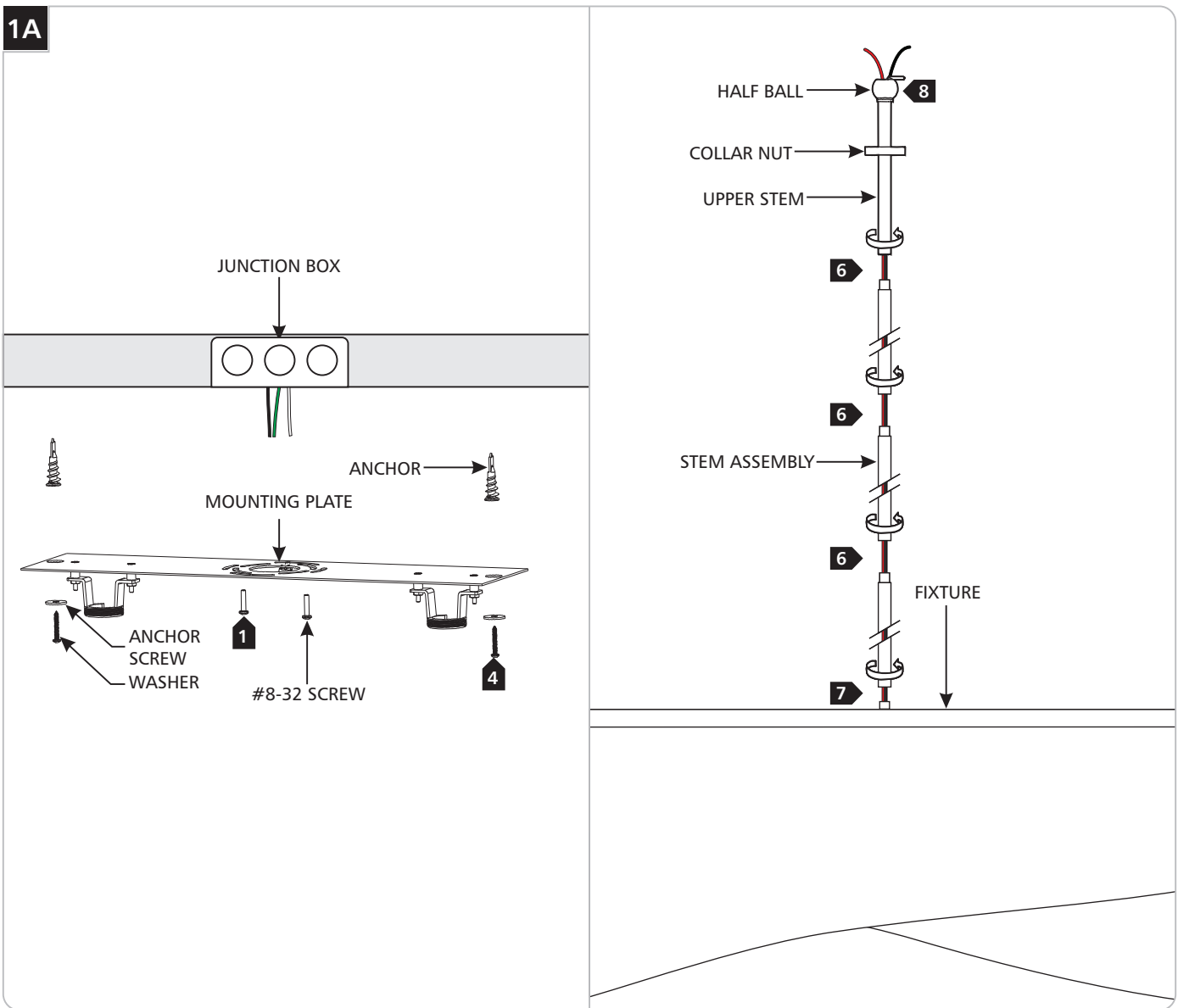
©2023 Visual Comfort & Co.. All rights reserved. The Visual Comfort & Co. logo is a registered trademark of Visual Comfort & Co. Visual Comfort & Co. reserves the right to change specifications for product improvements without notification



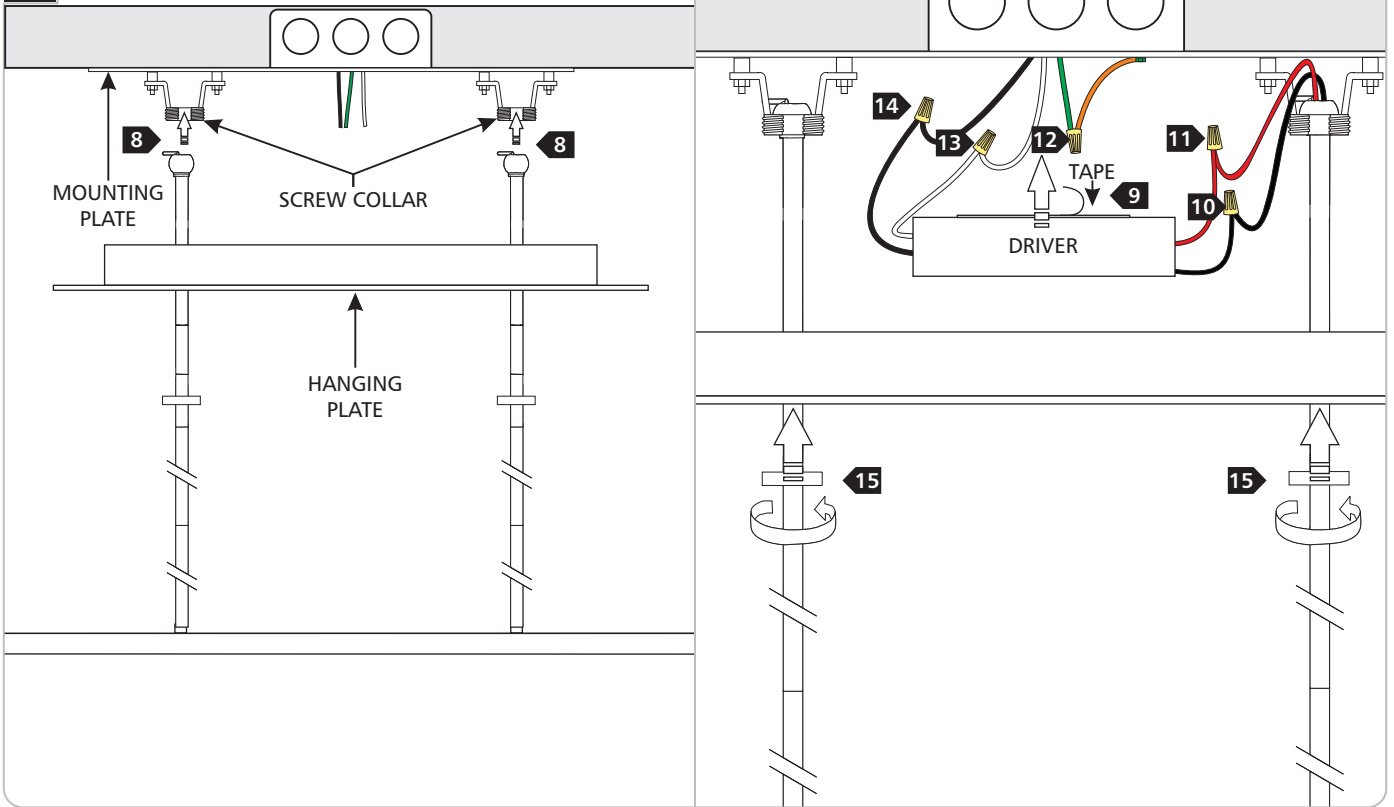
SAVE THESE INSTRUCTIONS!

Install the Fixture

1A



- 1 Secure the mounting plate to the electrical box with the #8-32 screws provided.
- 2 Line up an anchor with the center of a mounting plate hole and push the anchor in up to the threads.
- 3 Screw the anchor the rest of the way in with a screwdriver.
- 4 Secure the mounting plate to the anchor with an anchor screw and washer. **Repeat steps 2-4 for the remaining anchors.**
- 5 Determine the desired height of the fixture using the provided stems and assemble them by screwing them together.
- 6 Feed the fixture wires through the collar nut and stem assembly, then screw the stem assembly to the top of the fixture.
- 7 Feed the fixture wires through half ball and screw it to the stem on top.

1B

- 8** Insert the half ball/stem assemblies through the hanging plate and slide the half ball into the screw collars.
- 9** Peel off the backing on the double sided tape on the driver and attach it to the center of the mounting plate.
- 10** Connect the black/blue driver wire to all of the black/blue fixture wires with a wire nut.
- 11** Connect the red driver wire to all of the red fixture wires with a wire nut.
- 12** Connect the fixture to a suitable ground in accordance with local electrical codes.
- 13** Connect the white driver wire to the neutral power line with a wire nut.
- 14** Connect the black driver wire to the hot power line with a wire nut.
- 15** Neatly place the driver, all wires, and wire nut connections inside the mounting plate, place hanging plate onto the mounting, and secure in place by screwing all of the collar nuts onto the screw collars.

Notes