

INSTALLATION INSTRUCTION

Cube Architectural Color Tunable - Wall Mount

DC-WS05-CC, DC-WD05-CC

WAC LIGHTING

WARNING

IMPORTANT: NEVER attempt any work without shutting off the electricity.

- Read all instructions before installing.
- System is intended for installation by a qualified electrician in accordance with the National Electrical Code and local regulations.
- Go to the main fuse box, or circuit breaker. Place the main power switch in the "OFF" position and unscrew the fuse(s) or switch "OFF" the circuit breaker switch(es) that control the power to the fixture or room that you are working on.
- Place the wall switch in the "OFF" position.

CAUTION

- All parts must be used as indicated in these instructions. Do not substitute any parts, leave parts out, or use any parts that are worn out or broken. Failure to follow this instruction could invalidate the ETL/CETL listing of this fixture.
CAUTION When handling the fixture, do not apply pressure to the LEDs. Hold the fixture by the base only.

AVERTISSEMENT

IMPORTANT : Coupez l'électricité avant TOUTE manipulation.

- Lisez toutes les instructions avant d'installer.
- Système est destiné à être installé par un électricien qualifié en conformité avec le code national de l'électricité et les règlements locaux.
- Accédez au panneau central de disjoncteurs ou de fusibles de votre demeure et placez l'interrupteur principal en position d'arrêt (« OFF »).
- Placez l'interrupteur mural en position d'arrêt (« OFF »).

MISE EN GARDE

- Toutes les pièces doivent être utilisées tel qu'il est indiqué dans ces instructions. Ne remplacez pas les pièces, n'en laissez pas de côté et ne les utilisez pas si elles sont usées ou brisées. Le non-respect de ces instructions peut annuler l'homologation ETL/CETL du luminaire. MISE EN GARDE Ors de la manipulation de l'appareil, ne pas appliquer de pression à la LED, tenir l'appareil par la seule base.

ADVERTENCIA

IMPORTANTE: NUNCA intente hacer trabajos sin desconectar el suministro eléctrico.

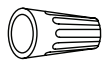
- Lea y comprenda todas las instrucciones e ilustraciones por completo antes de proceder con el ensamblaje e instalación de esta lámpara.
- Sistema está diseñado para ser instalado por un electricista calificado, de acuerdo con el código eléctrico nacional y las normas locales.
- Diríjase a la caja de fusibles o a la caja del interruptor de circuito principal en su hogar. Coloque el interruptor de alimentación principal en la posición "OFF" (APAGADO).
- Coloque el interruptor de la pared en la posición "OFF" (APAGADO).

PRECAUCIÓN

- Todas las piezas deben usarse como lo indican estas instrucciones. No reemplace las piezas, no omita piezas durante la instalación ni utilice piezas gastadas o rotas. El incumplimiento de esta indicación podría invalidar la calificación ETL/CETL esta lámpara. PRECAUCIÓN Al manipular el aparato, no aplique presión a los LED, mantenga el aparato en la base sólo.

HARDWARE

FIG.1



Wire Connector
Qty: 10pcs
7EAC112201
P3



Junction Box Screw
Qty: 2pcs + 1pc Extra
7MPF0825F1
#8-32 Long 1"
Steel Electroplating IN



Plastic Gasket
Qty: 3pcs
7TGD070101 (WT/BK/GH/DZ)

wacighting.com
Phone (800) 526.2588
Fax (800) 526.2585

Headquarters/Eastern Distribution Center
44 Harbor Park Drive
Port Washington, NY 11050

Central Distribution Center
1600 Distribution Ct
Lithia Springs, GA 30122

Western Distribution Center
1750 Archibald Avenue
Ontario, CA 91760

INSTALLATION INSTRUCTION

Cube Architectural Color Tunable - Wall Mount

DC-WS05-CC, DC-WD05-CC

WAC LIGHTING

OVERVIEW

It is surface mount down light, included ceiling mount, pendant mount, single direction wall wash and up-down direction wall wash. Check catalog for various mount type, size, beam angle and color choices.

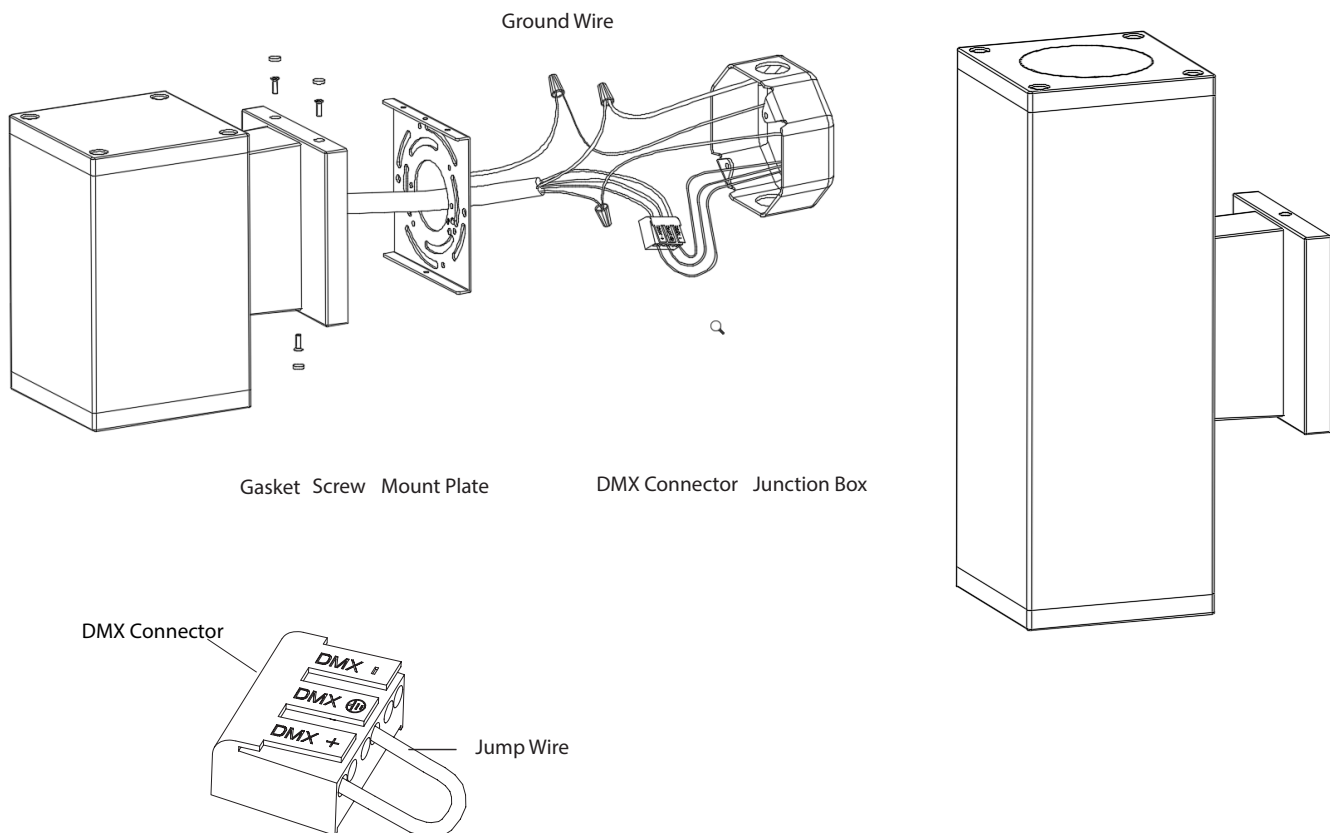
FIXTURE INSTALLATION

1. Carefully unpack your new fixture and lay out all the parts on a clear area. Be carefully not to lose any small parts necessary for installation. (See **FIG.1**)
2. Remove the screws holding mounting plate to fixture, and remove mounting plate from fixture. (See **FIG.2**)
3. Pull fixtures wires to the junction box through the mounting plate. Attach the DMX Connector to the fixture wires (see wiring diagrams on **Page 5**). For line voltage input, connect the black fixture wire to hot wire, white fixture wire to neutral wire; line voltage ground may be connected to the fixture ground screw. Refer to the [ilumenight Color Changing App Instruction](#) for initial fixture setup and control.
NOTE: For installations that do not require DMX control, the Jump Wire must remain attached to the DMX connector. (See **FIG.2**)

To utilize DMX, remove the jumper wire from the DMX connector, and insert wires from the DMX signal source or controller. After wires are connected securely, tuck them carefully inside the junction box.

4. Secure mounting plate to the junction box in wall provided by others. (See **FIG.2**)
5. Put the fixture to the mounting plate, and secure with screws and gasket.(See **FIG.2**)

FIG.2



wacighting.com
Phone (800) 526.2588
Fax (800) 526.2585

Headquarters/Eastern Distribution Center
44 Harbor Park Drive
Port Washington, NY 11050

Central Distribution Center
1600 Distribution Ct
Lithia Springs, GA 30122

Western Distribution Center
1750 Archibald Avenue
Ontario, CA 91760

INSTALLATION INSTRUCTION

Cube Architectural Color Tunable - Wall Mount

DC-WS05-CC, DC-WD05-CC

WAC LIGHTING

COMPLETING THE INSTALLATION

To prevent moisture from entering the junction box and potentially causing a short, use clear caulking (i.e. indoor/outdoor silicone sealant) to outline the outside of fixture plate where it meets the wall leaving a space at bottom to allow moisture to escape.

CAUTION: This fixture is factory sealed and tested to meet Wet Location standards before shipment. Care should be taken when replacing internal components. The fixture should be re-sealed with all supplied hardware and gaskets. Failure to do so may result in the loss of fixture wet location integrity and a void of WAC warranty.

LENS REPLACEMENT

1. Remove panel assembly by loosening the fixture screw and gasket, remove two screws to change lens. (FIG.4)
2. Replace your beam angle lens on panel and put back two screws. (FIG.5)

FIG.4

Remove two screws

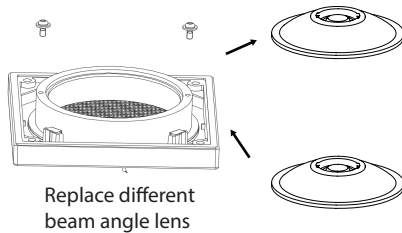
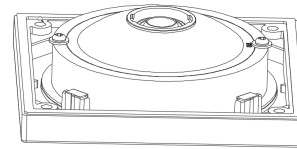


FIG.5



Put on lens and put back screws

LED REPLACEMENT

1. Loosen the fixture screw and gasket (FIG.6), remove the panel assembly (FIG.7).
2. Unscrew LED module, remove LED connector and replace LED module. (FIG.8). See wiring diagrams on **Page 5** for internal wire combinations.

FIG.6

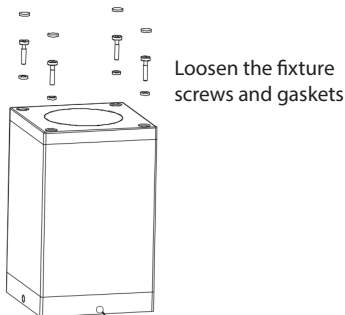


FIG.7

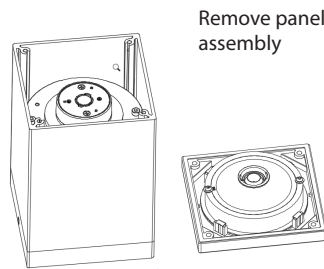
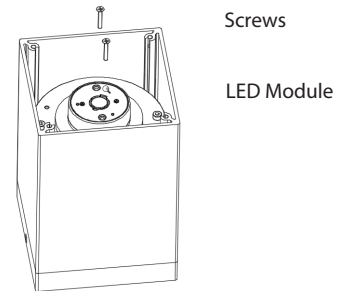


FIG.8



DC POWER SUPPLY REPLACEMENT

1. Loosen the fixture screw and gasket (FIG.9), remove the cover assembly (FIG.10).
2. Loosen the LED DC power supply screws, carefully disconnect LED from DC power supply and replace DC power supply (FIG.11).

FIG.9



FIG.10

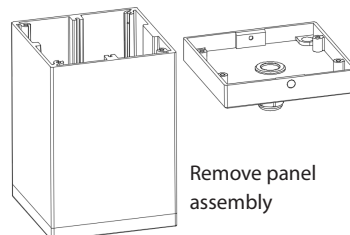
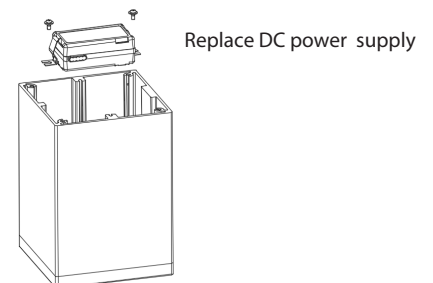


FIG.11



waclighting.com
Phone (800) 526.2588
Fax (800) 526.2585

Headquarters/Eastern Distribution Center
44 Harbor Park Drive
Port Washington, NY 11050

Central Distribution Center
1600 Distribution Ct
Lithia Springs, GA 30122

Western Distribution Center
1750 Archibald Avenue
Ontario, CA 91760

INSTALLATION INSTRUCTION

Cube Architectural Color Tunable - Wall Mount

DC-WS05-CC, DC-WD05-CC

WAC LIGHTING

REFLECTOR REPLACEMENT

1. Remove panel assembly by loosening the fixture screw and gasket, remove three clips to change reflector. **(FIG.12)**
2. Replace your reflector on panel and fix the clips. **(FIG.13)**

FIG.12

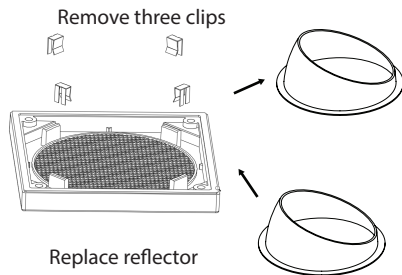
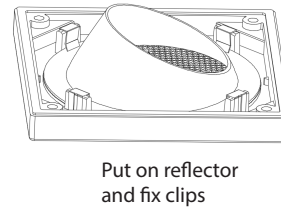


FIG.13



wacighting.com
Phone (800) 526.2588
Fax (800) 526.2585

Headquarters/Eastern Distribution Center
44 Harbor Park Drive
Port Washington, NY 11050

Central Distribution Center
1600 Distribution Ct
Lithia Springs, GA 30122

Western Distribution Center
1750 Archibald Avenue
Ontario, CA 91760

INSTALLATION INSTRUCTION

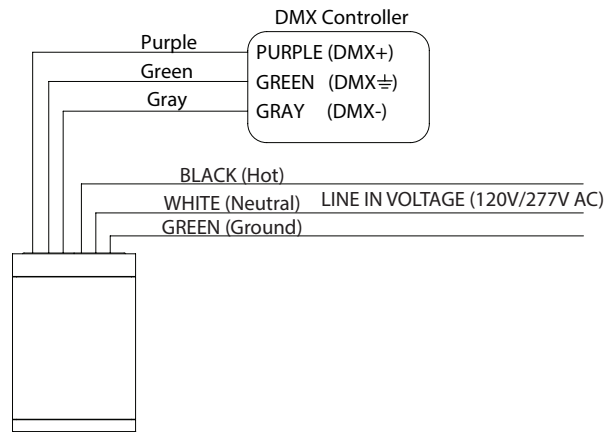
Cube Architectural Color Tunable - Wall Mount

DC-WS05-CC, DC-WD05-CC

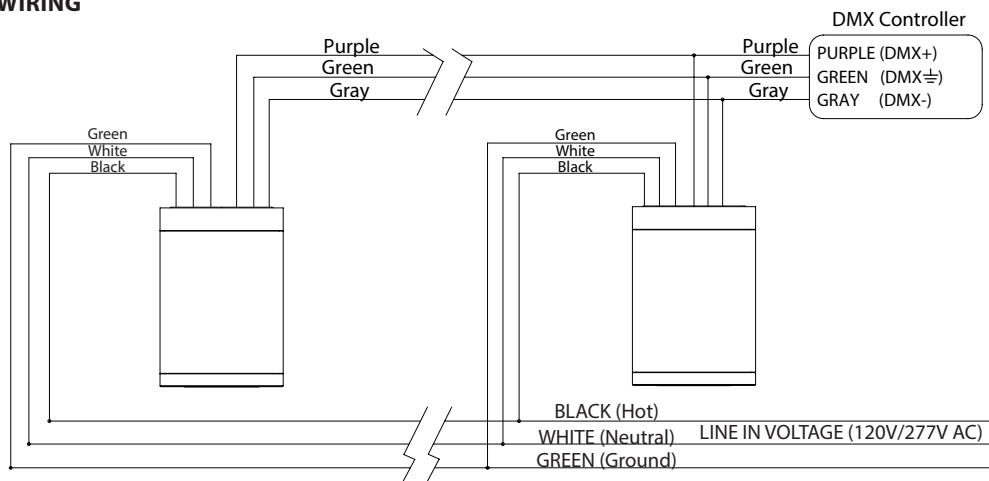
WAC LIGHTING

WIRING DIAGRAMS

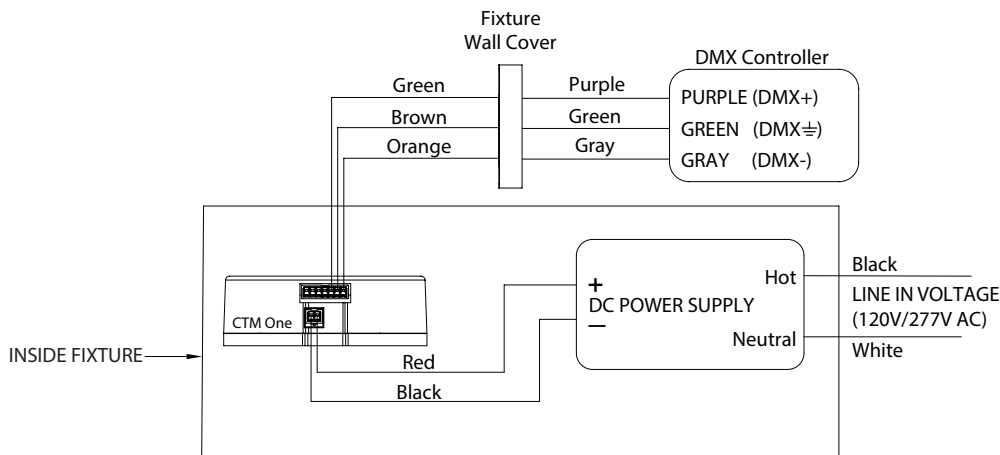
SINGLE FIXTURE WIRING



MULTIPLE FIXTURE WIRING



SINGLE FIXTURE (INTERNAL WIRING) - FOR LED MODULE REPLACEMENT



CTM MODULE WIRING CHART

LEAD COLOR	INPUT
Red	24V Positive
Black	24V Negative
Green	DMX+
Orange	DMX-
Brown	DMX≐

wacighting.com
Phone (800) 526.2588
Fax (800) 526.2585

Headquarters/Eastern Distribution Center
44 Harbor Park Drive
Port Washington, NY 11050

Central Distribution Center
1600 Distribution Ct
Lithia Springs, GA 30122

Western Distribution Center
1750 Archibald Avenue
Ontario, CA 91760



WAC

Quick Start Guide

WAC Ilumenight Color Changing 2.0

For a complete guide please visit www.waclighting.com

System Requirements: iOS 9.0 (Minimum)

WAC Ilumenight Color Changing 2.0 – Quick Start Guide

1 OVERVIEW

The WAC Ilumenight Color Changing 2.0 iOS app enables control of Bluetooth-equipped WAC modules incorporated into a lighting fixture. The app is designed for use by professional lighting specifiers and designers.

System Requirements: iOS 9.0 minimum.

Ilumenight Color Changing 2.0 supports iOS version-10 and is compiled to support bitcode and 64-bit requirements.

Click on the icon below (or type “Ilumenight color” in the Search window in the App Store screen) to view and download the app on your iOS device.



Multiple Modules Mode

A maximum of 8 connected modules can be controlled at a time by the app.¹ When more than 8 modules are discovered, the app enters into a special mode. This mode allows the user to keep the selected module connected at all times (unless the selected item is a group containing more than 8 modules), while other modules are disconnected periodically to limit the connected quantity to a maximum of 8 at any given time. This feature makes it possible to commission luminaires in a busy environment, where more than 8 modules are within the discovery distance range.²

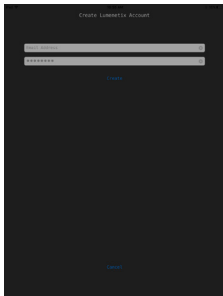
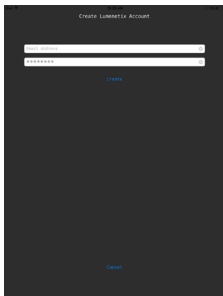
NOTE:

- ¹ Preexisting and active Bluetooth connections may reduce this maximum value.
- ² Only modules of the same CCT range can be grouped together.

WAC Ilumenight Color Changing 2.0 – Quick Start Guide

2 GETTING STARTED

Ensure that the lighting fixture is powered on




Download the latest version of the WAC Ilumenight Color Changing 2.0 app from the App Store and launch it.


Login is necessary ONLY if you need to operate modules that are password-protected. If you want to keep the modules open and accessible by everyone, you need to click on the “Skip” option in the login screen, or logout if you are already logged in.


2.1 Create Account (optional)

Click on the drop-down Options Menu on the top left of the screen, and click on ‘Login’ to access the ‘Create Account’ screen. Enter a valid email address and 6-character password to create an account and log in, after which you can secure and control any Bluetooth-equipped modules “discovered” by the app that are unlocked (no bulb icon).

NOTE: The password you create will be assigned to any unlocked modules and automatically lock them with a green lock  icon.


2.2 Login with an Account (optional)

If you have already created an account, you can log in by entering your email address and your password and then pressing “OK”. You will then be able to control any modules that you have previously secured with this password (these modules will have a green lock  icon).

Modules with a magenta icon  indicate that a different password was used to lock them, and you will not be able to control these modules.

The app remembers if you have previously logged in, so there is no need to re-enter the password each time. To logout, you have to go to the Options Menu->Logout <user name>.

2.3 ‘Skip’ (Login without an Account)

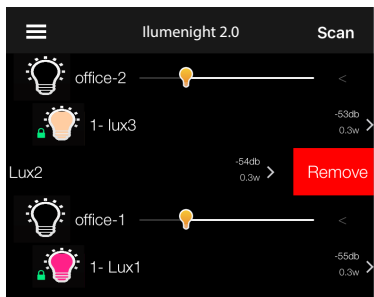
Using this option, you can discover — but NOT control — the values of locked modules with a red  icon. This option also prevents the app from locking any open modules.

NOTE: When you log in without an account, you cannot lock open modules to prevent access by others, and some buttons on the Options menu are not available (“grayed out”) to prevent unauthorized use.

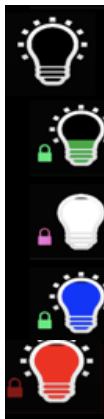
After completing one of these three startup options, click ‘Scan’ on the top right of the screen to discover modules.

WAC Ilumenight Color Changing 2.0 – Quick Start Guide

3 MAIN SCREEN



Module 'Bulb' and 'Lock' Icons



If there is a larger bulb icon with a slider located above any of the module bulb icons, this means that those modules have been assigned to a group.

NOTE: Any changes made to the group dimming slider or the on/off dots around the group bulb icon will apply to all of the lamps in that group. At the same time, individual modules can be dimmed or controlled even if they are part of a group (including the ability to reset the password or Factory Default a single module or an entire group of modules at a time).

Simply tap on a desired module or group to launch its Commissioning Screen.




The main screen lists all discovered modules or groups of modules. In the main screen, the modules can be turned on and off by pressing and holding on the bulb icon belonging to that module. The signal strength of the Bluetooth connection is shown on the right of each module.

Clicking the '>' shown in the row will open a more detailed view. Sliding a row to the left will reveal a red 'Remove' button. This will remove the selected module from the display (until the next scan).

NOTE: The left slider icon or red 'Remove' button is not available for the parent of any group.

The inside of each module 'bulb' icon represent the color of the light as well as the dimming level. The dots around the bulb icon tell you if the module is turned on or off. If the dots are present, the module is ON; if the dots are not shown, the module is OFF.

To the left of each module's colored bulb icon, there is one of three smaller 'lock' icons: green, red, or magenta.

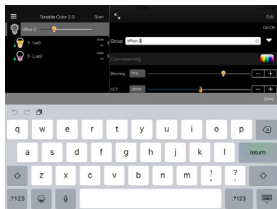
- If is  green, the user is logged in and the module's password matched the user's password. This module can now be controlled and commissioned by the user.
- If is  magenta, the user is logged in, but the module is locked under a different password. This module cannot be controlled unless the password that was previously used to secure the module is entered. The user won't be able to change the module name or group, nor be able to bring the group name dialog up.
- If is  red, the user is NOT logged in, but the module is password-protected and so it cannot be controlled. The user won't be able to change the module name or group, nor be able to bring the group name dialog up.
- If there is no lock icon, the user is NOT logged in and the module is 'open' (not password-protected).

WAC Illumenight Color Changing 2.0 – Quick Start Guide

4 COMMISSIONING SCREEN

4.1 Properties Menu

This top section of the Commissioning Screen shows the Group name field if a group is chosen, or the Module and Group name fields if a Module is chosen.



4.1.1 Module / Group Properties

The names for a chosen module and/or group are listed here. These names can be changed as needed.

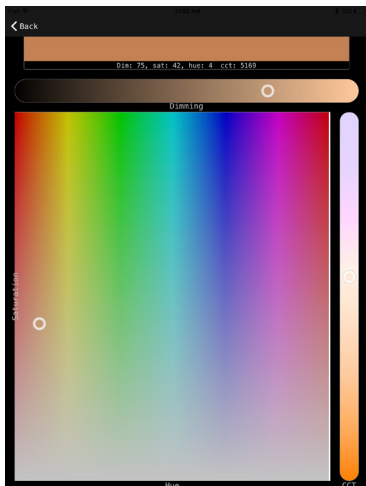
The On / Off button shown on the right of the Group Name or Module Name field allows for toggling the selected group or module on or off without going back to the Main Screen.



In addition, the arrow to the right of the Group field displays a drop-down menu that allows for the modules in the group to be moved to a different group, or to be added to a new group, or to be ungrouped again into individual modules.

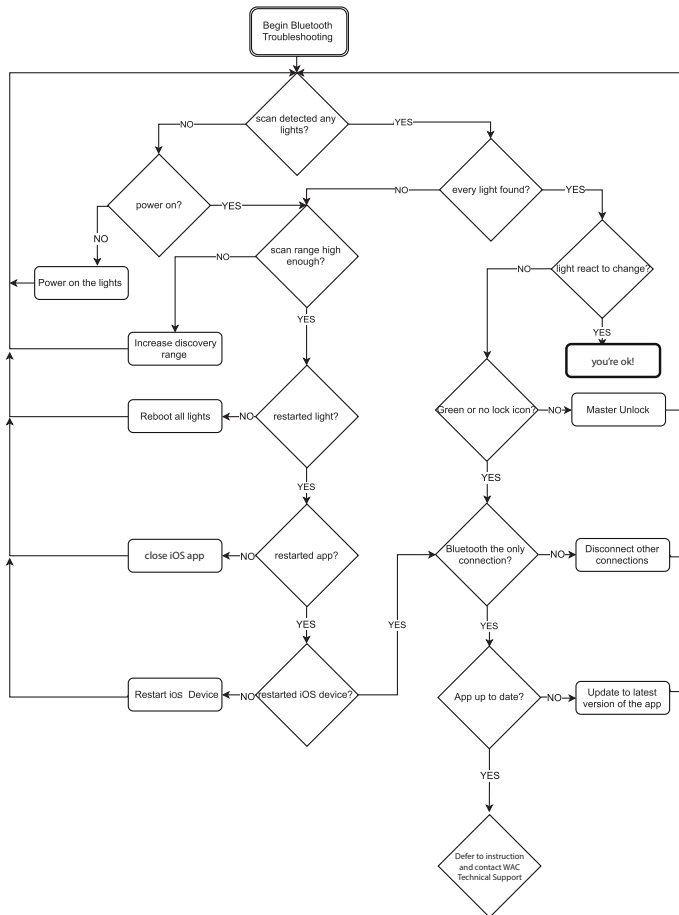
4.1.2 Color Picker

Instead of clicking or sliding one at a time to choose individual values in the Commissioning section below, a color with specific Dimming/CCT/Hue/Saturation values can be visually chosen from the color picker palette. Simply slide the circle icons to the desired color value.



WAC Illumenight Color Changing 2.0 – Quick Start Guide

5 TROUBLESHOOTING







WAC

SETUP INSTRUCTIONS

WAC Ilumenight Color Changing 2.0 Instruction Manual

System Requirements: iOS 9.0 (Minimum)

WAC Ilumenight Color Changing 2.0 – Instruction Manual

TABLE OF CONTENTS	PAGE
1. Overview.....	3
2. Getting Started.....	4
2.1 Create Account (optional).....	4
2.2 Login with an Account (optional).....	4
2.3 'Skip' (Login without an account).....	4
3. Main Screen.....	5
4. Commissioning Screen.....	6
4.1 Properties Menu.....	6
4.1.1 Module / Group Properties.....	6
4.1.2 Color Picker.....	6
4.2 Commissioning Controls Menu.....	7
4.2.2 CCT.....	7
4.2.3 Saturation.....	7
4.2.4 Hue.....	7
4.3 SceneSet® Options Menu.....	8
4.3.1 Light / Application Scenaset®.....	8
4.3.2 0-10V Control Option.....	8
4.4 DMX Slots Configuration.....	9
4.4.1 DMX Channel Selection Process.....	9
4.4.2 Testing the Slot Configuration.....	9
5. Edit Menu.....	10
5.1 Copy / Paste Options.....	10
5.2 Unlock / Lock Options.....	10
5.3 Master Unlock.....	10
5.4 Factory Default.....	11
5.5 'Apply to Group' Button.....	11
5.6 Animate Hue.....	11
6. Options Menu.....	12
6.1 Create Group (only active when logged in).....	12
6.2 Discovery Distance (in meters).....	12
6.3 Save / Delete Discovered Modules.....	13
6.4 About this App.....	13
6.5 Support.....	13
6.6 Legal.....	14
6.7 Login / Logout.....	14
6.8 Reset Password (accessed from the Login / Logout Screen).....	14
6.9 Console.....	14
6.10 Bug Report.....	15
6.11 Module Report.....	15
7. Troubleshooting.....	16

WAC Ilumenight Color Changing 2.0 – Instruction Manual

1 OVERVIEW

The WAC Ilumenight Color Changing 2.0 iOS app enables control of Bluetooth-equipped WAC modules incorporated into a lighting fixture. The app is designed for use by professional lighting specifiers and designers.

System Requirements: iOS 9.0 minimum.

Ilumenight Color Changing 2.0 supports iOS version-10 and is compiled to support bitcode and 64-bit requirements.

Click on the icon below (or type “Ilumenight color” in the Search window in the App Store screen) to view and download the app on your iOS device.



Currently, email and GPS position is collected (subject to change). The app uses an “authentication” feature, which adds new possibilities. Authentication also requires every user to use a password with a minimum of 6 valid characters. Once the valid password is approved and the modules are detected, the user will have full control.

The app does not require the user to re-enter a password every time, and remembers if the user has previously logged in. The session remains logged in (or remains in the “Skip” mode if chosen by the user) until the user specifically logs out of or logs back into the app.

The user can reset their own password via the app, and will receive a reset link via email. However, any locked modules will still need to have their individual passwords separately reset.

WAC has the ability to temporarily revoke access or change the user password for any user account. From within the Firebase website, user accounts and passwords can be deleted, changed or disabled. The ‘Master Password’ can also be updated at any moment without changing the app itself.

Upon discovery, the modules (including the WAC Logic Module or the Digital Control Adapter) can be named, and if desired, assigned to a group. The app enables the user to set the Correlated Color Temperature (CCT), Dimming, Saturation and Hue for each module/group. SceneSet® enables up to five scenes — a scene is any combination of CCT, Dimming, Saturation and Hue — to be programmed into the module for recall by the app or a 0-10V connection. For modules connected to a DMX system, the DMX channels can also be set using this app. For modules connected to a 0-10V line, SceneSet® Mode can also be specified in the app. Consult the fixture’s spec sheet or instructions for WAC module control capability.

Split-View Screen Mode

On iPhone 6+, 7+ and iPads, but NOT on iPhone SE, Ilumenight Color Changing 2.0 supports a split-view screen. This allows you to see the list of connected modules and groups on the left and their commissioning details on the right.

Multiple Modules Mode

A maximum of 8 connected modules can be controlled at a time by the app.¹ When more than 8 modules are discovered, the app enters into a special mode. This mode allows the user to keep the selected module connected at all times (unless the selected item is a group containing more than 8 modules), while other modules are disconnected periodically to limit the connected quantity to a maximum of 8 at any given time. This feature makes it possible to commission luminaires in a busy environment, where more than 8 modules are within the discovery distance range.²

NOTE:

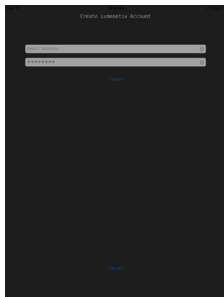
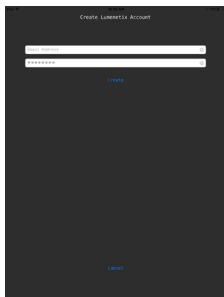
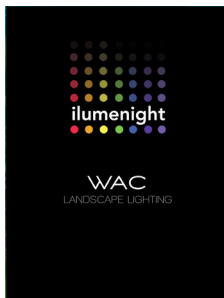
¹ Preexisting and active Bluetooth connections may reduce this maximum value.

² Only modules of the same CCT range can be grouped together.

WAC Ilumenight Color Changing 2.0 – Instruction Manual

2 GETTING STARTED

Ensure that the lighting fixture is powered on




Download the latest version of the WAC Ilumenight Color Changing 2.0 app from the App Store and launch it.


Login is necessary ONLY if you need to operate modules that are password-protected. If you want to keep the modules open and accessible by everyone, you need to click on the "Skip" option in the login screen, or logout if you are already logged in.


2.1 Create Account (optional)

Click on the drop-down Options Menu on the top left of the screen, and click on 'Login' to access the 'Create Account' screen. Enter a valid email address and 6-character password to create an account and log in, after which you can secure and control any Bluetooth-equipped modules "discovered" by the app that are unlocked (no bulb icon).

NOTE: The password you create will be assigned to any unlocked modules and automatically lock them with a green lock  icon.


2.2 Login with an Account (optional)

If you have already created an account, you can log in by entering your email address and your password and then pressing "OK". You will then be able to control any modules that you have previously secured with this password (these modules will have a green lock  icon).

Modules with a magenta icon  indicate that a different password was used to lock them, and you will not be able to control these modules.

The app remembers if you have previously logged in, so there is no need to re-enter the password each time. To logout, you have to go to the Options Menu->Logout <user name>.

2.3 'Skip' (Login without an Account)

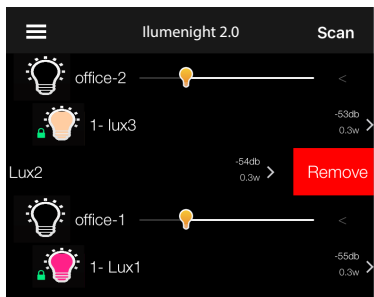
Using this option, you can discover — but NOT control — the values of locked modules with a red  icon. This option also prevents the app from locking any open modules.

NOTE: When you log in without an account, you cannot lock open modules to prevent access by others, and some buttons on the Options menu are not available ("grayed out") to prevent unauthorized use.

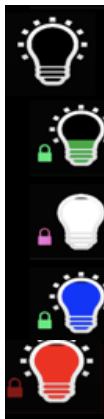
After completing one of these three startup options, click 'Scan' on the top right of the screen to discover modules.

WAC Ilumenight Color Changing 2.0 – Instruction Manual

3 MAIN SCREEN



Module 'Bulb' and 'Lock' Icons



If there is a larger bulb icon with a slider located above any of the module bulb icons, this means that those modules have been assigned to a group.

NOTE: Any changes made to the group dimming slider or the on/off dots around the group bulb icon will apply to all of the lamps in that group. At the same time, individual modules can be dimmed or controlled even if they are part of a group (including the ability to reset the password or Factory Default a single module or an entire group of modules at a time).

Simply tap on a desired module or group to launch its Commissioning Screen.




The main screen lists all discovered modules or groups of modules. In the main screen, the modules can be turned on and off by pressing and holding on the bulb icon belonging to that module. The signal strength of the Bluetooth connection is shown on the right of each module.

Clicking the '>' shown in the row will open a more detailed view. Sliding a row to the left will reveal a red 'Remove' button. This will remove the selected module from the display (until the next scan).

NOTE: The left slider icon or red 'Remove' button is not available for the parent of any group.

The inside of each module 'bulb' icon represent the color of the light as well as the dimming level. The dots around the bulb icon tell you if the module is turned on or off. If the dots are present, the module is ON; if the dots are not shown, the module is OFF.

To the left of each module's colored bulb icon, there is one of three smaller 'lock' icons: green, red, or magenta.

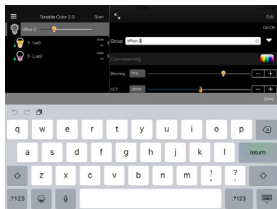
- If is  green, the user is logged in and the module's password matched the user's password. This module can now be controlled and commissioned by the user.
- If is  magenta, the user is logged in, but the module is locked under a different password. This module cannot be controlled unless the password that was previously used to secure the module is entered. The user won't be able to change the module name or group, nor be able to bring the group name dialog up.
- If is  red, the user is NOT logged in, but the module is password-protected and so it cannot be controlled. The user won't be able to change the module name or group, nor be able to bring the group name dialog up.
- If there is no lock icon, the user is NOT logged in and the module is 'open' (not password-protected).

WAC Ilumenight Color Changing 2.0 – Instruction Manual

4 COMMISSIONING SCREEN

4.1 Properties Menu

This top section of the Commissioning Screen shows the Group name field if a group is chosen, or the Module and Group name fields if a Module is chosen.



4.1.1 Module / Group Properties

The names for a chosen module and/or group are listed here. These names can be changed as needed.

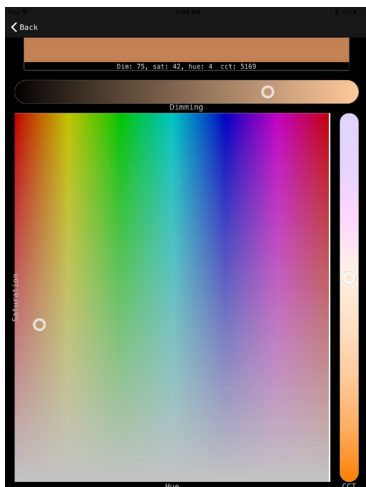
The On / Off button shown on the right of the Group Name or Module Name field allows for toggling the selected group or module on or off without going back to the Main Screen.



In addition, the arrow to the right of the Group field displays a drop-down menu that allows for the modules in the group to be moved to a different group, or to be added to a new group, or to be ungrouped again into individual modules.

4.1.2 Color Picker

Instead of clicking or sliding one at a time to choose individual values in the Commissioning section below, a color with specific Dimming/CCT/Hue/Saturation values can be visually chosen from the color picker palette. Simply slide the circle icons to the desired color value.



WAC Ilumenight Color Changing 2.0 – Instruction Manual

4 COMMISSIONING SCREEN

4.2 Commissioning Controls Menu

The module or group can be commissioned in one of three ways:

- clicking on the value field to the left of the sliders, which will display a keyboard for typing in the desired value;
- dragging the sliders left or right with numerical DMX values showing up during the sliding action;
- tapping on the -/+ buttons on the right side of the sliders.

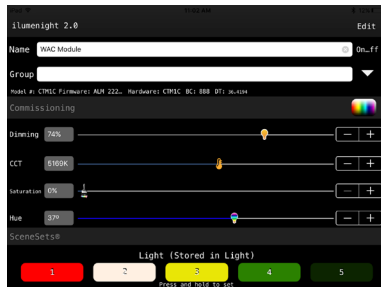
4.2.1 Dimming

The module or the group can be dimmed from 100–1%, in increments of 1%. The dimming value is shown at the far left.

4.2.2 CCT

The CCT of an individual module or selected group of modules can be changed in increments of 25K. The CCT range of 1650 – 4000K, 2700 – 6000K, or 1650 – 8000K is automatically detected.

NOTE: Only modules of the same CCT range can be grouped together.



4.2.3 Saturation

Saturation adds gradients of color to a white point. Saturation can be added in increments of 1%, from 1 - 100% (fully saturated).

4.2.4 Hue

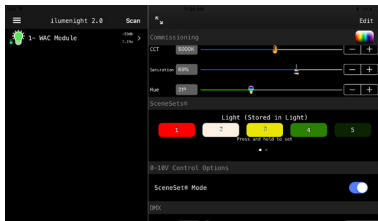
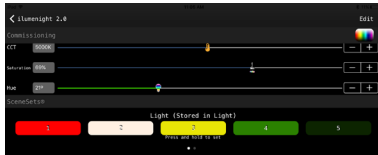
Hue enables different colors to be added to the light in increments of 1°, from 1° to 60°.

WAC Ilumenight Color Changing 2.0 – Instruction Manual

4 COMMISSIONING SCREEN

4.3 SceneSet® Options Menu

Allows up to five scenes to be programmed and recalled for a selected module or group. For Color Tuning Modules, the color of the SceneSet rectangle represents the dominant color of the selected module. For Dynamic Dimming Modules, the rectangles are depicted in shades of gray.



4.3.1 Light / Application SceneSets®

To activate SceneSet, tap on any one of the SceneSet rectangles (labeled "1", "2", "3", "4" or "5"). Commission the lamp as previously described. To save scenes, press and hold one of the SceneSet buttons until the color of the chosen SceneSet rectangle changes. The SceneSet button will then display the dominant color of the scene as a visual cue.

NOTE: Users can swipe to switch between the Light SceneSets (1-5) and the App SceneSets (A-E), or tap on the dots below the SceneSet rectangles. The App SceneSets will stay with the app regardless of the module chosen.

4.3.2 0 - 10V Control Option

When the lamp is connected to a 0-10V line, the default is control of Correlated Color Temperature (CCT). If desired, the 0-10V line can be set to control SceneSet by sliding the SceneSet Mode button to the "on" position. In this mode, the 0-10V control will toggle the light between up to 5 preset scenes. Consult the fixture's spec sheet or instructions for WAC module 0-10V control capability.

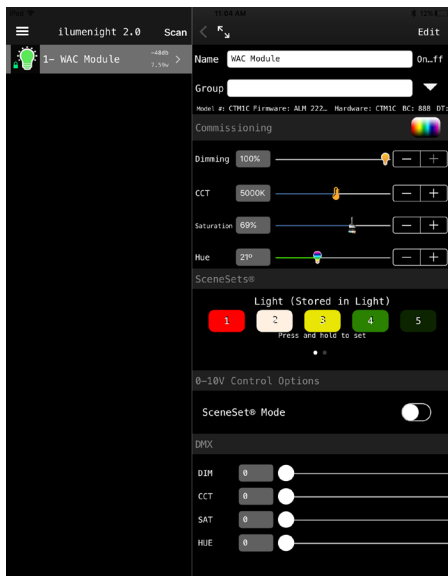
WAC Ilumenight Color Changing 2.0 – Instruction Manual

4 COMMISSIONING SCREEN

4.4 DMX Slots Configuration

This feature enables the configuration of DMX channels using an iOS device. The DMX control system should first be powered OFF, and only modules that are connected to the DMX system should be powered on.

Note: Consult the fixture's spec sheet or instructions for WAC module DMX control capability.



4.4.1 DMX Channel Selection Process

- On the Main Screen, select the module or group to be configured.
- Scroll to the bottom of the Commissioning Screen until the DMX Channels selection menu is visible.
- Set the four channel numbers appropriately as desired numbers between 0 and 512, either by dragging the sliders, or by clicking in the value fields and typing in the desired values, or by pressing the +/- buttons located on the right of the sliders.

4.4.2 Testing the Slot Configuration

- Power up the DMX control system.
- Apply the DMX signals to the channels set during slot configuration.

WAC Iluменight Color Changing 2.0 – Instruction Manual

5 EDIT MENU (UPPER RIGHT OF COMMISSIONING SCREEN)



5.1 Copy / Paste Options

The 'Copy All Parameters' command will copy all the current commissioning parameters made to a single module or group. You can then go back to the Main Screen to choose an UNLOCKED module or group, then click on the 'Paste All Parameters' command from the Edit menu to apply these parameters to the chosen module or group.

'Copy to App SceneSets®': This copies the 5 Light SceneSets over to the App SceneSets of the same module.

'Paste App SceneSets®': This pastes the 5 copied SceneSets to the App SceneSets of any selected module.

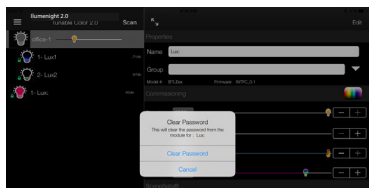
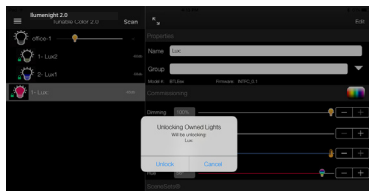
5.2 Unlock / Lock Options

The Lock command will lock any unlocked modules or newly discovered ones with the current password. The Unlock command will unlock any modules that have been locked with the current password.

NOTE: Unlocked modules will remain as such until the user clicks on 'Scan' again on the Main Screen, at which point they are locked again, indicated by the green icon.

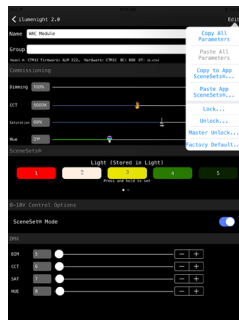
5.3 Master Unlock

This command will clear the password that was set for each module currently displaying in the app. It will ask the user for a Master Password to perform this operation. This Master Password is different from the login password, and can be obtained by contacting your WAC sales representative.



WAC Ilumenight Color Changing 2.0 – Instruction Manual

5 EDIT MENU (UPPER RIGHT OF COMMISSIONING SCREEN)

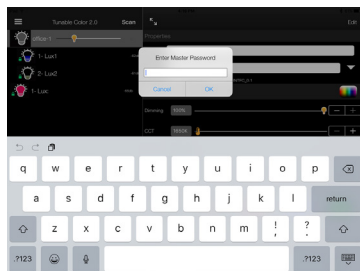


5.4 Factory Default

The user is allowed to enter the Master Password only once per session. This command allows the application user to enter the Master Password when they have access to a wi-fi or cellular network, and also be able to reset lights where no such access is available.

It is now possible to reset every parameter other than the module name to a factory default with a single operation:

- Clear password
- Clear group name
- Reset SceneSets®
- SceneSet® Mode off
- Light(s) on
- DMX values reset from 1 to 4, or reset to '1' for Dynamic Dimming Modules



5.5 'Apply to Group' Button

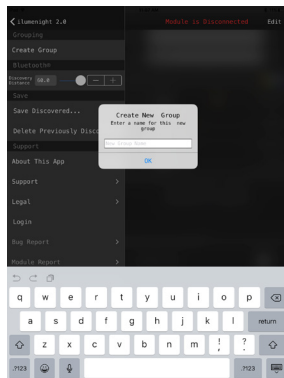
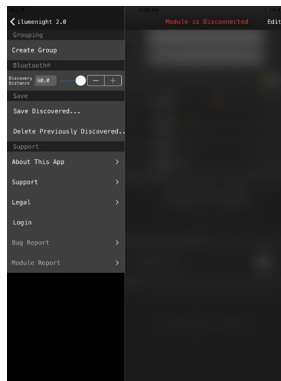
Tapping on this button will apply the current commissioning settings to all of the modules in the same group.

5.6 Animate Hue

This command can be used to animate the hue value in a loop until canceled (good for a quick test/demo of the module).

WAC Illumenight Color Changing 2.0 – Instruction Manual

6 OPTIONS MENU (UPPER LEFT OF MAIN SCREEN)



6.1 Create Group (only active when logged in)

New groups can be created and named here first, and then the module(s) belonging to each new group can be chosen directly on the Main Screen. This process makes it easier to group multiple modules at a time.

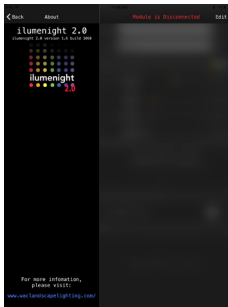
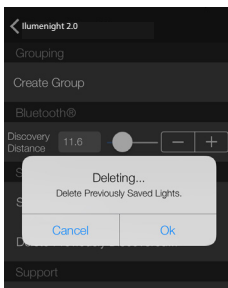
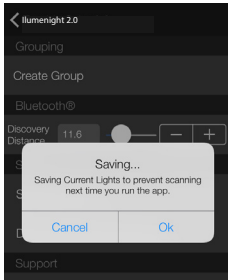
6.2 Discovery Distance (in meters)

This changes the discovery distance up to a maximum of 30 meters (approx. 100 feet).* When commissioning multiple modules, reducing the discovery distance enables connection to the closest lamp.

* *Discovery distance may vary due to environmental factors.*

WAC Illumenight Color Changing 2.0 – Instruction Manual

6 OPTIONS MENU (UPPER LEFT OF MAIN SCREEN)



6.3 Save / Delete Discovered Modules

After discovering and connecting to selected modules, the 'Save Discovered...' option will allow you to save those modules. Next time the app is started afresh, only those saved modules will be detected. The regular scan will be skipped entirely and the app will attempt to reconnect only. If the app cannot find the saved modules, it will try to reconnect in the background

If you tap on the 'Scan' button, it will remove any previously saved modules and will then detect any modules within the vicinity of the device based on the discovery distance set.

Conversely, the 'Delete Previously Discovered...' command will allow you to delete any modules that have previously been saved.

6.4 About This App

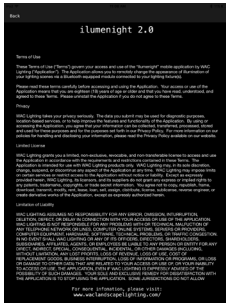
Provides information about the release and build number of the app. If you tap on the website link provided, the app will exit and take you to a web browser directed to the WAC website.

6.5 Support

Tapping this button launches you to the support page on the WAC web site.

WAC Illumenight Color Changing 2.0 – Instruction Manual

6 OPTIONS MENU (UPPER LEFT OF MAIN SCREEN)



6.6 Legal

Provides necessary and important legal information about the nature and use of the app.

6.7 Login / Logout

Logs in or out of the current account (see the 'Getting Started' section).

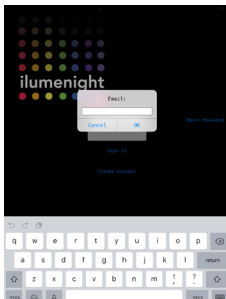
6.8 Reset Password (accessed from the Login/Logout screen)

The user can reset their own password via the app, and will receive a reset link via email. However, any locked modules will still need to have their individual passwords separately reset.

NOTE: Internet access is required to perform this action.

6.9 Console

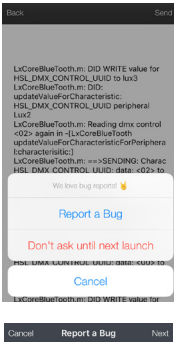
Used by WAC to troubleshoot any issues that may arise with the app and the module.



```
<SmartLightCBKeyfob.m:2008>
Receiving from device Lux:6AEE
characteristic HSL_DEVICE_INFO,LUUID
-->>>> DEVICE_INFO: <01007206 a00f>
desc: <GCharacteristic: 0x1740032a0,
LUUID = 1CEBF23-D65F-4A0C-B246-
DE9FCE8BD0A, properties = 0xA, value
= <01007206 a00f>, notifying = NO>
-----
Device lock state for: "Lux:6AEE" is 1
-----
<SmartLightCBKeyfob.m:2008>
Receiving from device DCA:DB80
characteristic HSL_DEVICE_INFO,LUUID
-->>>> DEVICE_INFO: <01007206 a00f>
desc: <GCharacteristic: 0x17408300,
LUUID = 1CEBF23-D65F-4A0C-B246-
DE9FCE8BD0A, properties = 0xA, value
= <01007206 a00f>, notifying = NO>
-----
Device lock state for: "DCA:DB80" is 1
-----
<SmartLightCBKeyfob.m:2008>
Receiving from device Cv:brn
characteristic
HSL_POWER_CONSUME_LUUID
<SmartLightCBKeyfob.m:2008>
Receiving from device Lux:6AEE
characteristic
HSL_POWER_CONSUME_LUUID
```

WAC Ilumenight Color Changing 2.0 – Instruction Manual

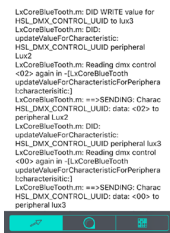
6 OPTIONS MENU (UPPER LEFT OF MAIN SCREEN)



6.10 Bug Report

Once logged in, this screen will provide detailed information about each discovered module.

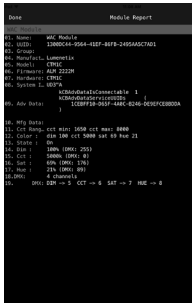
The 'Share' command on the top-right of this screen will allow you to share this information with yourself or others.



6.11 Module Report

Once logged in, this screen will provide detailed information about each discovered module.

The 'Share' command on the top-right of this screen will allow you to share this information with yourself or others.



WAC Illumenight Color Changing 2.0 – Instruction Manual

7 TROUBLESHOOTING

