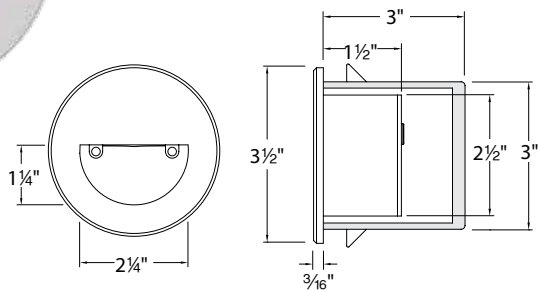


Model: WL-LED300

LEDme® Step Light

WAC LIGHTING

Responsible Lighting®



Fixture Type:

Catalog Number:

Project:

Location:

PRODUCT DESCRIPTION

Circular scoop LEDme® Step Light. Designed for safety and style on stairways, patios, decks, balcony areas, walkways and building perimeters. Features an architectural design. Energy efficient for long-lasting indoor and outdoor lighting solutions. Creates an attractive, romantic impression at night. Colored lights can be used for way finding.

FEATURES

- Direct wiring, no driver needed
- Low profile, flush to wall aesthetics with no visible hardware
- 40,000 hour rated life
- Balanced lighting, free of shadows with minimum glare
- Up to 200 fixtures can be connected in parallel
- Replaceable LED module
- 5 year WAC Lighting product warranty

SPECIFICATIONS

Construction: Die-cast aluminum

Power: Direct wiring, no remote driver needed
Input voltage: 120VAC 50/60Hz

Light Source: 3000K CCT Samsung HV-AC High Power LED, CRI: 85
Total power consumption of 3.9W

Mounting: Supplied with junction box for recessed installation
Suitable for new construction or retrofit installations.
See next page for spacing recommendations

Dimming: Dim to 10% with electronic low voltage (ELV) dimmer
Approved dimmers: Lutron Skylark SELV-300P-WH and Leviton Vizia VPE04

Standards: IP66, UL & cUL Listed for wet locations

FIXTURE PERFORMANCE

Model #	Lm	Model #	Lm	Model #	Lm
WL-LED300-C-BN	30	WL-LED300-C-BZ	33	WL-LED300-C-WT	74
WL-LED300-AM-BN	19	WL-LED300-AM-BZ	21	WL-LED300-AM-WT	38
WL-LED300-RD-BN	2	WL-LED300-RD-BZ	2	WL-LED300-RD-WT	4
WL-LED300-BL-BN	3	WL-LED300-BL-BZ	4	WL-LED300-BL-WT	8

ORDER NUMBER

Model #	Color	Finish
WL-LED300 120V	C White 3000K	BN Brushed Nickel BZ Bronze WT White
	AM Amber 610nm	
	RD Red 640nm	
	BL Blue 450nm	

FINISHES



WL-LED300 - -

Example: **WL-LED300-C-WT**

WAC Lighting
www.waclighting.com
Phone (800) 526.2588 • Fax (800) 526.2585

Headquarters/Eastern Distribution Center
44 Harbor Park Drive • Port Washington, NY 11050
Phone (516) 515.5000 • Fax (516) 515.5050

Western Distribution Center
1750 Archibald Avenue • Ontario, CA 91760
Phone (800) 526.2588 • Fax (800) 526.2585

Model: WL-LED300

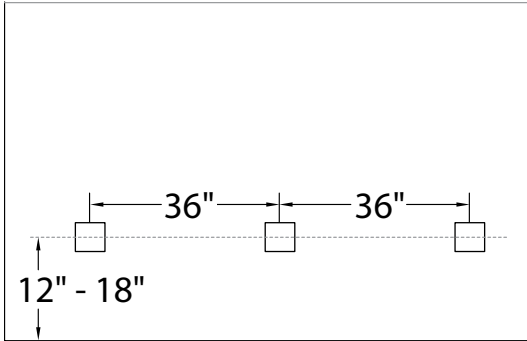
LEDme® Step Light

WAC LIGHTING

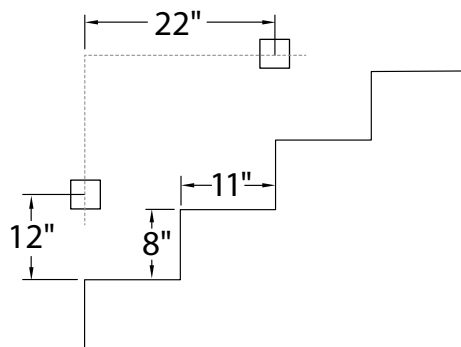
Responsible Lighting®

Spacing Recommendations for Optimal Light Distribution

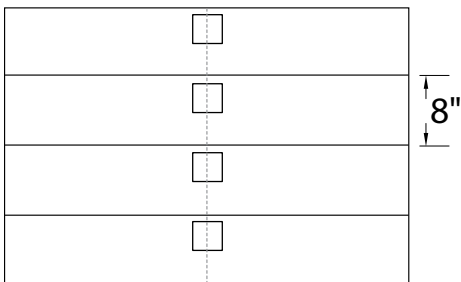
Corridors / Hallways



Stairs - Wall Mount



Stairs - Step Mount



Mount in center of stair as close to the upper tread as possible.
For best results use one light per step for steps narrower than 5'.