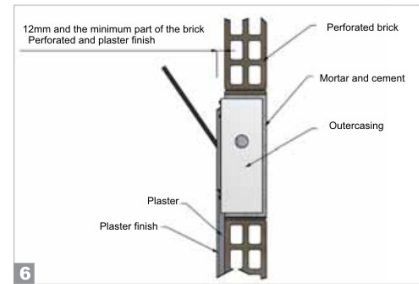
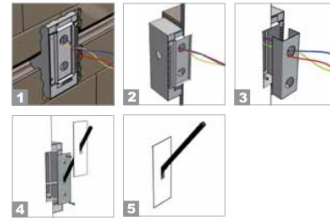
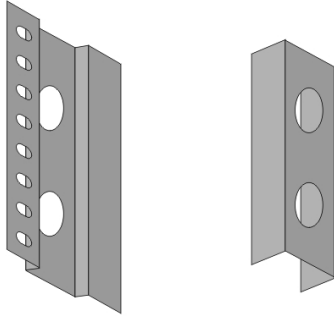


Date: _____ Project: _____
Fixture Type: _____ Specifier/Rep: _____



Available for **International** specifications by adding "INT" at the end of the existing Model
International spec sheets are available upon request

Exact Measurements: Metric

Model: D4-9028

Additional Details

Used for outer casing Masonry

Components for use with....

- Spillo - Semi Recessed - 2 Rods - [D4-6031WHI] -- 120cm / 47 1/4" - 15.36W LED - 3000K - White
- Spillo - Semi Recessed - 2 Rods - [D4-6031CHR] -- 120cm / 47 1/4" - 15.36W LED - 3000K - Chrome
- Spillo - Semi Recessed - 2 Rods - [D4-6031BLA] -- 120cm / 47 1/4" - 15.36W LED - 3000K - Black
- Spillo - Semi Recessed - 2 Rods - [D4-6030WHI] -- 90cm / 35 7/16" - 11.88W LED - 3000K - White
- Spillo - Semi Recessed - 2 Rods - [D4-6030CHR] -- 90cm / 35 7/16" - 11.88W LED - 3000K - Chrome
- Spillo - Semi Recessed - 2 Rods - [D4-6030BLA] -- 90cm / 35 7/16" - 11.88W LED - 3000K - Black
- Spillo - Semi Recessed - 2 Rods - [D4-6029WHI] -- 60cm / 23 5/8" - 7.44W LED - 3000K - White
- Spillo - Semi Recessed - 2 Rods - [D4-6029CHR] -- 60cm / 23 5/8" - 7.44W LED - 3000K - Chrome
- Spillo - Semi Recessed - 2 Rods - [D4-6029BLA] -- 60cm / 23 5/8" - 7.44W LED - 3000K - Black