

Lightology

lightology.com
866-954-4489
02-18-26

Project: _____
Company: _____
Location: _____ Fixture Type: _____
SPEC #: **DLS1080210**
Approved On: _____ Approved By: _____

Hilux Color-Select Commercial Recessed Downlight

By DALS Lighting



air
TIGHT



Description

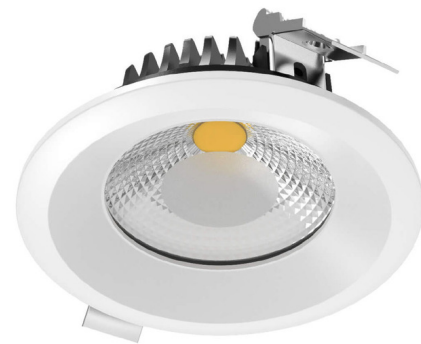
The Dals Hilux Commercial Downlight is your go-to for commercial projects. With its five color temperature selection, durable cast aluminum housing, high-powered lumen output, and indoor/outdoor rating, the Hilux can be used just about anywhere. It casts a wide 360 spread with 90 beam angle. This slim recessed fixture is perfect for a range of commercial applications from clinics to schools and hotels to boutiques. A junction box with integrated driver is included. Color temperature (CCT) is set using a switch on the driver: 2700K, 3000K, 3500K, 4000K, or 5000K. The 120V option is TRIAC and ELV dimmable. The 120V/277V/347V option is 0-10V dimmable. Note: The Black finish is not available in every size and voltage.

Specifications

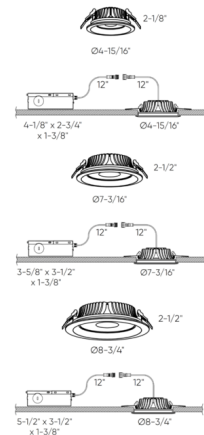
REFLECTOR/BAFFLE COLOR	N/A
BODY FINISH	White
WATTAGE	20W
DIMMER	Low Voltage Electronic
DIMENSIONS	4"W x 2.125"H
INTEGRATED LED MODULE	1 x LED/20W/120V LED
COUNTRY OF ORIGIN	China

Technical Information

APERTURE SHAPE	Round
HOUSING HEIGHT	2"
HOUSING TYPE	Remodel IC Airtight
CEILING TYPE	Drywall with Trim
FUNCTION	Downlight
LAMP LIFE	50000 hours
BEAM ANGLE	90°
COLOR RENDERING	90 CRI
LAMP COLOR	CCT Select
LUMENS/WATT	70.75
LUMINOUS FLUX	1415 lumens



Shown in white



CLICK TO VIEW PRODUCT

Notes: