

Lightology

lightology.com
866-954-4489
04-22-26

Project: _____

Company: _____

Location: _____ Fixture Type: _____

SPEC #: **BOM1105715**

Approved On: _____ Approved By: _____

Blimp Pendant By Bomma



Description

The Blimp Pendant is a testimony to human ingenuity and top-level craftsmanship. It features a Clear or Amber lead-free Crystal shade effortlessly hanging from a Black Aluminum frame. Dimmable with TRIAC, ELV and 0-10V dimming. Note: The 23.6 inch option requires a junction box that supports fixtures over 50 pounds.

Specifications

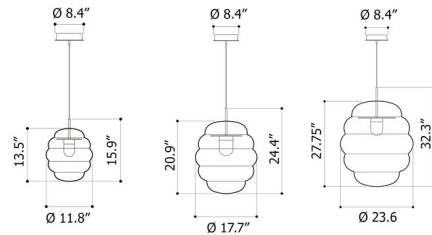
COLOR	Clear
BODY FINISH	Black
WATTAGE	12.6W
DIMMER	Standard 120V
DIMENSIONS	11.8"W x 15.9"H
INTEGRATED LED MODULE	1 x LED/12.6W/120V LED
COUNTRY OF ORIGIN	Czech Republic

Technical Information

PRODUCT DIMENSIONS	Canopy: 8.4" diameter
COLOR RENDERING	90 CRI
LAMP COLOR	2700K
LUMENS/WATT	194.44
LUMINOUS FLUX	2450 lumens



Shown in black / clear



CLICK TO VIEW PRODUCT

Notes: