



lightology.com  
866-954-4489  
07-28-25

Project: \_\_\_\_\_

Company: \_\_\_\_\_

Location: \_\_\_\_\_ Fixture Type: \_\_\_\_\_

SPEC #: **JUN111316**

Approved On: \_\_\_\_\_ Approved By: \_\_\_\_\_

## TL602E 25W LED Electronic Remote Driver/Transformer 12V

By Juno Lighting

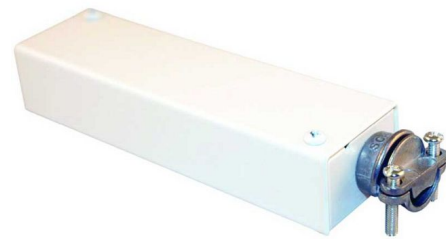


### Description

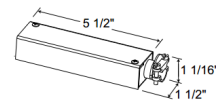
TL602E-25 12 Volt 25 Watt Electronic Remote Driver/Transformer is rated for 0.5 to 25 watts incandescent or LED total load, 120VAC input. Available in a 10, 25 or 60 watt direct wire or 60 watt plug in option. Made of 18 gauge die formed steel with powder coat finish in White. Available in a direct-wire or plug in version. IC rated for recessed applications and can be buried in insulation. Provided with terminal block on output side for quick and secure fixture wiring. Direct wire version supplied with die-cast fitting for 3/8 inch flexible metal conduit. Transformer should be located within 4 feet of first fixture in run. Provision for ground wire attachment. Supplied with two No 6 wood screws for mounting to wood surfaces. Incandescent loads can be dimmed with high quality dimmers designed for use with electronic transformers. LED loads may be dimmed using only dimmers that have been tested and qualified by Juno for use with Juno LED fixtures including: Leviton Acenti Ace-06-1L, Lutron Diva DVELV-300P, Lutron Nova T NTELV300, Lutron Skylark SELV-300P, or Lutron Spacer SPSELV-600, sold separately. UL listed. Suitable for damp locations. 5.5 inch length x 1.5 inch width x 1.1 inch height. Compatible with Juno Trac 12 miniature low voltage track system using LED or incandescent luminaires or Mini LED downlights.

### Specifications

COLOR	N/A
BODY FINISH	White
WATTAGE	25W
DIMMER	Low Voltage Electronic
DIMENSIONS	5.5"L x 1.5"W x 1.1"H
BULB	N/A



Shown in white



CLICK TO VIEW PRODUCT

Notes: