

Lightology

lightology.com
866-954-4489
05-22-26

Project: _____

Company: _____

Location: _____ Fixture Type: _____

SPEC #: **JUS1128144**

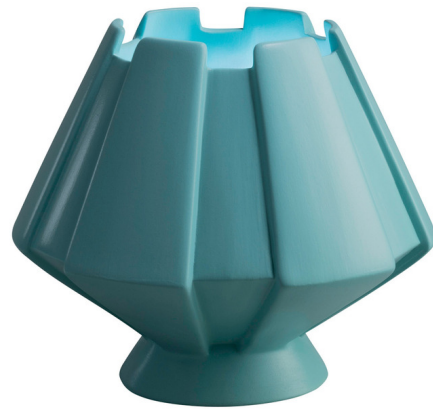
Approved On: _____ Approved By: _____

Meta Table Lamp By Justice Design



Description

Transcend traditional lighting standards with an exciting complimentary light source in the Justice Design Meta Ceramic Portable. This beautiful indoor light fixture opens up a bevy of new styling possibilities. Made from hand-cast, hand-finished ceramic material and will not rust or corrode. This energy-efficient indoor light fits perfectly within a wide variety of lighting schemes and is a great option for adding light to any space. Create a signature vibe with lighting from Justice Design. Fixture comes with 6-ft of clear cord and inline rocker switch.



Shown in reflecting pool

Specifications

COLOR	N/A
BODY FINISH	Reflecting Pool
WATTAGE	60W
DIMMER	Included
DIMENSIONS	7.5"W x 7"H
BULB NOT INCLUDED	1 x A19/Medium (E26)/60W/120V Incandescent
OTHER BULB OPTIONS	1 x A19/Medium (E26)/120V LED
COUNTRY OF ORIGIN	United States



CLICK TO VIEW PRODUCT

Notes: