

Lightology

lightology.com
866-954-4489
05-17-26

Project: _____

Company: _____

Location: _____ Fixture Type: _____

SPEC #: **TOY1140760**

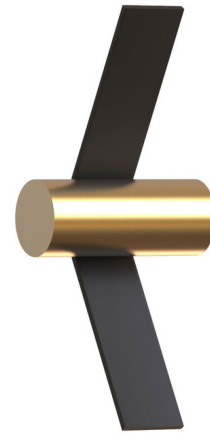
Approved On: _____ Approved By: _____

Nastro Outdoor Angled Wall Sconce By Tooy



Description

The Nastro Angled Wall Sconce features an aluminum band bent around a cylinder to create a modern, geometric fixture. The integrated LED strip allows the sconce to maintain its simple, minimalist structure. Installable horizontally or vertically. Phase cut dimming. Backplate for standard US junction box is included. Note: Includes a remote driver which must be placed in a remote accessible location (remote driver dimensions: 6.3L x 1.8W x .8H). The Color choice is for the structure and the Finish choice is for the cylindrical weight.



Shown in brushed brass cylinder / sand black

Specifications

COLOR Sand Black
BODY FINISH Brushed Brass Cylinder
WATTAGE 15W
DIMMER Low Voltage Electronic
DIMENSIONS 8.7"W x 19.3"H x 6.1"D
INTEGRATED LED MODULE 1 x LED/15W/120V LED

Technical Information

PRODUCT DIMENSIONS Remote Driver Dimensions: 6.3"W x 1.7"D x 0.78"H
LAMP COLOR 2700K
LUMENS/WATT 124.13
LUMINOUS FLUX 1862 lumens



CLICK TO VIEW PRODUCT

Notes: