

Lightology

lightology.com
866-954-4489
05-25-26

Project: _____

Company: _____

Location: _____ Fixture Type: _____

SPEC #: **BPU1161163**

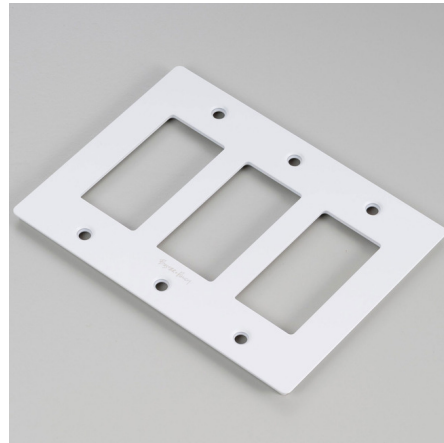
Approved On: _____ Approved By: _____

Buster + Punch Metal Wall Plate

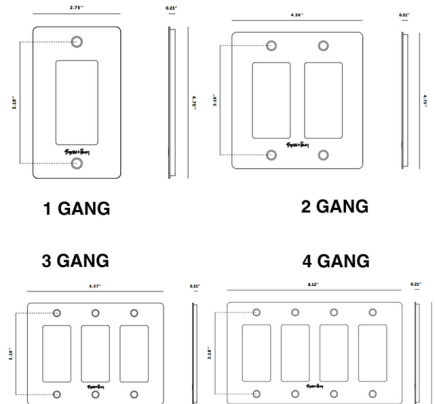
By Buster + Punch

Description

The Buster + Punch Wall Plate features a clean and modern design with an industrial flair. Available in 1, 2, 3, and 4 gang wall plates in a variety of metal finishes. Each wall plate comes with inner plates and are ready to match up with Buster + Punch modules and detail kits. Mounts to standard flush mounted boxes. Available with or without a Buster + Punch logo. Note: Wall plates have a .16 inch shadow gap when installed. Learn more about Buster + Punch Electricity Collection here.



Shown in white



Specifications

| | |
|-------------|--------------------------|
| COLOR | N/A |
| BODY FINISH | White |
| WATTAGE | N/A |
| DIMMER | N/A |
| DIMENSIONS | 6.37"W x 4.75"H x 0.21"D |
| BULB | N/A |



CLICK TO VIEW PRODUCT

Notes: