

Lightology

lightology.com
866-954-4489
05-23-26

Project: _____

Company: _____

Location: _____ Fixture Type: _____

SPEC #: **BFR1167718**

Approved On: _____ Approved By: _____

Shear Wall Sconce

By Bert Frank

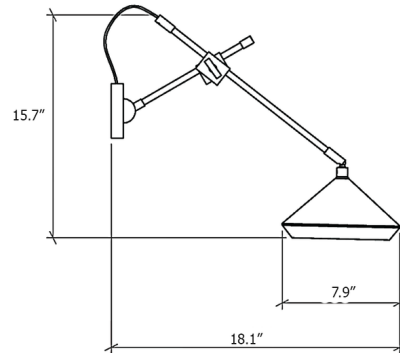


Description

The Shear Wall Sconce is a versatile and functional fixture with a luxurious expression and timeless silhouette. The conical shade is crafted from spun aluminum and accented with a brass rim and interior to reflect light and create a warm glow. The shade can be tilted to aim the light beam, and it is supported by an adjustable arm that can be raised and lowered. Note: UL certification is available upon request for an additional charge. Please contact our sales team for assistance.



Shown in brass / white



Specifications

COLOR	White
BODY FINISH	Brass
WATTAGE	4W
DIMMER	Standard 120V
DIMENSIONS	7.9"W x 15.7"H x 18.1"D
BULB INCLUDED	1 x JCD/G9/4W/120V LED
COUNTRY OF ORIGIN	United Kingdom

Technical Information

COLOR RENDERING	80 CRI
LAMP COLOR	2700K
LUMENS/WATT	62.50
LUMINOUS FLUX	250 lumens



CLICK TO VIEW PRODUCT

Notes: