

# Lightology

lightology.com  
866-954-4489  
08-04-25

Project: \_\_\_\_\_  
Company: \_\_\_\_\_  
Location: \_\_\_\_\_ Fixture Type: \_\_\_\_\_  
SPEC #: **ELE1188656**  
Approved On: \_\_\_\_\_ Approved By: \_\_\_\_\_

## Entra CL 2IN Square Flanged New Construction Housing

By Visual Comfort Architectural



### Description

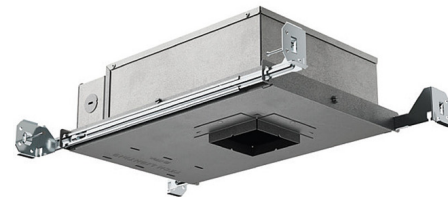
This Entra CL 2 Inch IC Airtight or Chicago Plenum new construction housing is designed for use with Entra CL 2 inch square adjustable, fixed downlight, or wall wash flanged trims. The housing includes a 120-277V Universal driver, dimmable by standard reverse-phase, forward-phase, TRIAC, or 0-10V dimming (down to 5%). 277V is only compatible with 0-10V dimming. Damp-rated when used with an adjustable trim, wet-rated when used with a fixed downlight or wall wash trim. Note: A complete fixture requires this housing and a trim, sold separately. The light module is included with the trim.

### Specifications

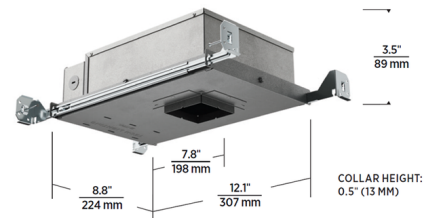
REFLECTOR/BAFFLE COLOR . . . . . N/A  
BODY FINISH . . . . . Galvanized Steel  
WATTAGE . . . . . 8W  
DIMMER . . . . . Low Voltage Electronic  
DIMENSIONS . . . . . 12.1"W x 3.5"H x 8.8"D  
BULB NOT INCLUDED . . . . . 1 x LED/8W/120-277V LED

### Technical Information

APERTURE SHAPE . . . . . Square  
HOUSING HEIGHT . . . . . 3.5"  
HOUSING TYPE . . . . . New construction IC Airtight  
CEILING TYPE . . . . . Drywall with Trim  
LUMENS/WATT . . . . . 87.50  
LUMINOUS FLUX . . . . . 700 lumens



Shown in galvanized steel



CLICK TO VIEW PRODUCT

Notes: