

# Lightology

lightology.com  
866-954-4489  
10-14-25

Project: \_\_\_\_\_

Company: \_\_\_\_\_

Location: \_\_\_\_\_ Fixture Type: \_\_\_\_\_

SPEC #: **WAC1206259**

Approved On: \_\_\_\_\_ Approved By: \_\_\_\_\_

## FQ 4 inch Square Adjustable Trimless Downlight

By WAC Lighting



### Description

The FQ 4 Inch Square Trimless Adjustable Downlight is designed for use with the FQ 4 Inch Series of recessed housings by WAC Lighting. This high performance LED luminaire will provide quality lighting in both commercial and residential settings. The trim ships with a 27 degree reflector pre-installed, but also includes field-changeable 40 and 50 degree reflectors for a wider beam angle. The luminaire can be tilted up to 45 degrees and rotated 365 degrees to aim the light precisely where it is needed. Ceiling cutout: 4.75 inch. Accommodates 0.5 to 1 inch ceiling thickness. TRIAC and ELV dimming at 120V; 0-10V dimming at 277V. Note: A complete fixture requires the trim and a housing, sold separately. Compatible with 13, 19, 25 and 28 watt housings (lumens shown based on 27 degree beam angle at 3000K with 28 watt housing)

### Specifications

REFLECTOR/BAFFLE COLOR . . . . . N/A

BODY FINISH . . . . . White

WATTAGE . . . . . N/A

DIMMER . . . . . Low Voltage Electronic

DIMENSIONS . . . . . 3"W x 5.63"H

INTEGRATED LED MODULE . . . . . LED/120-277V LED

### Technical Information

APERTURE SHAPE . . . . . Square

CEILING TYPE . . . . . Drywall Trimless/Flush

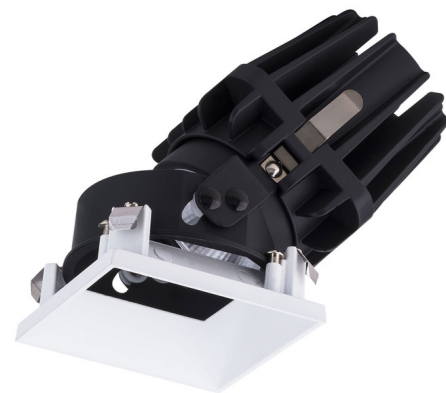
FUNCTION . . . . . Adjustable Accent

LAMP LIFE . . . . . 50000 hours

COLOR RENDERING . . . . . 90 CRI

LAMP COLOR . . . . . 3500K

LUMINOUS FLUX . . . . . 1680 lumens



Shown in white

| Model | Model                            | Beam  | *Lumens | *CCTP | Color Temp | CRI | Finish   | Reflector/Trim                         |
|-------|----------------------------------|-------|---------|-------|------------|-----|--|--|
|       | <b>RAFSAL</b><br>Square Trimless | N 27° | 1395    | 1310  | 2700K      | 90  | <b>BC</b><br><b>DB</b><br><b>HC</b><br><b>WT</b> | Black<br>Dark Bronze<br>White<br>White |
|       |                                  | F 40° | 1310    | 1310  | 2700K      | 90  |  |  |
|       |                                  | W 50° | 1390    | 2995  |            |     |  |  |
|       |                                  | N 27° | 1680    | 5275  |            |     |  |  |
|       |                                  | F 40° | 1395    | 2495  | 3000K      | 90  |  |  |
|       |                                  | W 50° | 1670    | 3150  |            |     |  |  |
|       |                                  | N 27° | 1710    | 5485  |            |     |  |  |
|       |                                  | F 40° | 1620    | 2355  | 3000K      | 90  |  |  |
|       |                                  | W 50° | 1700    | 3215  |            |     |  |  |
|       |                                  | N 27° | 1680    | 5275  |            |     |  |  |
|       |                                  | F 40° | 1395    | 2495  | 3000K      | 90  |  |  |
|       |                                  | W 50° | 1670    | 3150  |            |     |  |  |

**RAFSAL** -

Example: **RAFSAL-930-WT** (Beam N 27° reflector is pre-installed. Beams F 40° and W 50° reflectors are included).

\*Lumens and CCTP are reference values for 3000K. Use with 4" housing. Use multiplier table below to determine the output for other combinations.

| Multiplier | 27°  | 40°  | 50°  |
|------------|------|------|------|
| 4          | 0.99 | 1.00 | 1.00 |
| 3          | 0.84 | 0.88 | 0.88 |
| 2          | 0.65 | 0.68 | 0.70 |
| 1          | 0.45 | 0.47 | 0.48 |

Example: **RAFSAL-930-WT** N 27° beam in 4" housing 1680lm (Reference Output) x 0.47 (Multiplier) = 790lm  
5375 CCTP (Reference Output) x 0.47 (Multiplier) = 2525 CCTP

Housing 1: 13 Watt  
Housing 2: 19 Watt  
Housing 3: 25 Watt  
Housing 4: 28 Watt



CLICK TO VIEW PRODUCT

Notes: