



lightology.com
866-954-4489
02-15-26

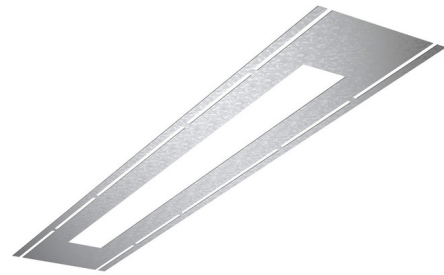
Project: _____	
Company: _____	
Location: _____	Fixture Type: _____
SPEC #: DLS1231663	
Approved On: _____	Approved By: _____

Rough-In Plate for 48 Inch Linear Recessed

By DALS Lighting

Description

The Rough-In Plate is designed for 48 inch linear recessed fixtures. Plates serve as template for cutting precise product openings. Adds extra support and allows for easy and quick installation. Cutout: 47-7/16 inch x 2-1/8 inch.



Shown in galvanized steel

Specifications

COLOR	N/A
BODY FINISH	Galvanized Steel
WATTAGE	N/A
DIMMER	N/A
DIMENSIONS	47.43"W x 2.13"H
BULB	N/A
COUNTRY OF ORIGIN	China



CLICK TO VIEW PRODUCT

Notes: