

Lightology

lightology.com
866-954-4489
04-25-26

Project: _____

Company: _____

Location: _____ Fixture Type: _____

SPEC #: **BLE1236145**

Approved On: _____ Approved By: _____

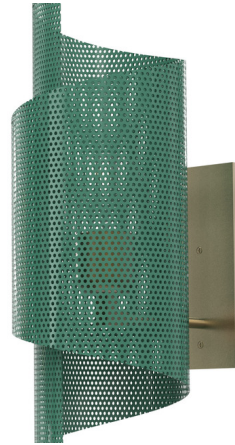
Spun Tulle Wall Sconce

By Blueprint Lighting



Description

The Tulle Wall Sconce brings together the past and present, paying tribute to Mathieu Mategot's iconic Rigitulle mesh metal material while updating it with a modern touch. A sheet of perforated metal wraps around the light to form this intriguing sconce, a unique sculpture that elevates your space while offering warm ambient illumination. Note: Requires a 2 x 4 inch junction box (backplate is 3 x 8.75 inches).



Shown in natural brass / paris green

Specifications

COLOR	Paris Green
BODY FINISH	Natural Brass
WATTAGE	60W
DIMMER	Standard 120V
DIMENSIONS	6"W x 16.5"H x 8"D
BULB NOT INCLUDED	1 x T9/Medium (E26)/60W/120V Incandescent
OTHER BULB OPTIONS	1 x T9/Medium (E26)/120V LED



CLICK TO VIEW PRODUCT

Notes: