

# Lightology

lightology.com  
866-954-4489  
08-30-25

Project: \_\_\_\_\_  
Company: \_\_\_\_\_  
Location: \_\_\_\_\_ Fixture Type: \_\_\_\_\_  
SPEC #: **VCG1237423**  
Approved On: \_\_\_\_\_ Approved By: \_\_\_\_\_

## Dorchester Double Plate Swing Arm Wall Sconce

By Visual Comfort Signature

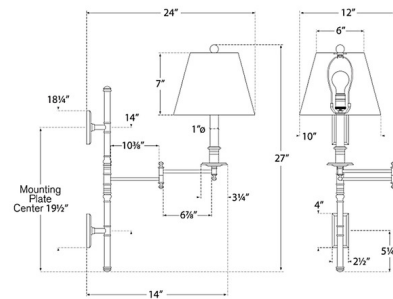


### Description

The Dorchester Double Plate Swing Arm Wall Sconce brings a midcentury modern look to your interior space. The decorative frame extends from 12 inches to 24 inches. Topped with a wide shade that casts warm light across your room. Hi/Lo switch is located on the lamp socket. Note: May be used as a Plug-in or Hardwired. Note: If hardwired, fixture does not cover a standard US junction box and requires a 2 x 4 inch junction box. Lower backplate holds the power wires.



Shown in antique burnished brass / black



### Specifications

COLOR . . . . . Black  
BODY FINISH . . . . . Antique Burnished Brass  
WATTAGE . . . . . 100W  
DIMMER . . . . . Standard 120V  
DIMENSIONS . . . . . 10"W x 27"H x 24"D  
BULB NOT INCLUDED . . . . . 1 x A19/Medium (E26)/100W/120V Incandescent  
OTHER BULB OPTIONS . . . . . 1 x A19/Medium (E26)/120V LED



CLICK TO VIEW PRODUCT

Notes: