

# Lightology

lightology.com  
866-954-4489  
08-23-25

Project: \_\_\_\_\_  
Company: \_\_\_\_\_  
Location: \_\_\_\_\_ Fixture Type: \_\_\_\_\_  
SPEC #: **VCG1242020**  
Approved On: \_\_\_\_\_ Approved By: \_\_\_\_\_

## Iberia Double Wall Sconce

By Visual Comfort Signature

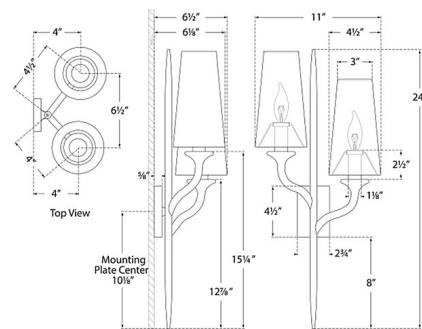


### Description

The Iberia Double Wall Sconce brings an elegant beauty to your interior space. The gently curving organic form is inspired by tree branches, and is topped by conical linen shades that casts warm light across your room. Note: Fixture does not cover a standard US junction box and requires a 2 x 4 inch junction box.



Shown in plaster white / linen



### Specifications

COLOR . . . . . Linen  
BODY FINISH . . . . . Plaster White  
WATTAGE . . . . . 50W  
DIMMER . . . . . Standard 120V  
DIMENSIONS . . . . . 11"W x 24"H x 6.5"D  
BULB NOT INCLUDED . . . . . 2 x B11/Candelabra (E12)/25W/120V Incandescent  
OTHER BULB OPTIONS . . . . . 2 x B10/Candelabra (E12)/120V Incandescent  
2 x B10/Candelabra (E12)/120V LED  
2 x B11/Candelabra (E12)/120V LED



CLICK TO VIEW PRODUCT

Notes: