

# Lightology

lightology.com  
866-954-4489  
05-24-26

Project: \_\_\_\_\_  
 Company: \_\_\_\_\_  
 Location: \_\_\_\_\_ Fixture Type: \_\_\_\_\_  
 SPEC #: **VCG1242414**  
 Approved On: \_\_\_\_\_ Approved By: \_\_\_\_\_

## Cabinet Maker Double Plug-in / Hardwired Library Light

By Visual Comfort Signature

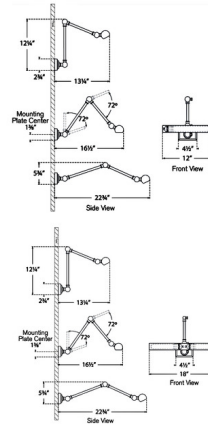


### Description

The Cabinet Maker Double Plug-in / Hardwired Library Light adds a classic look to your space. The double arm can adjust to direct light where you need it. If used as a plug-in, On/Off switch is located on the cord, 18 inches from the backplate. Note: If hardwiring this piece, Fixture does not cover a standard US junction box and requires a 2 x 4 junction box.



Shown in hand-rubbed antique brass



### Specifications

COLOR	N/A
BODY FINISH	Hand-Rubbed Antique Brass
WATTAGE	8W
DIMMER	Standard 120V
DIMENSIONS	12"W x 12.25"H x 22.75"D
BULB NOT INCLUDED	1 x T10/Medium (E26)/8W/120V LED



CLICK TO VIEW PRODUCT

Notes: