

# Lightology

lightology.com  
866-954-4489  
08-20-25

Project: \_\_\_\_\_  
Company: \_\_\_\_\_  
Location: \_\_\_\_\_ Fixture Type: \_\_\_\_\_  
SPEC #: **LGU1264454**  
Approved On: \_\_\_\_\_ Approved By: \_\_\_\_\_

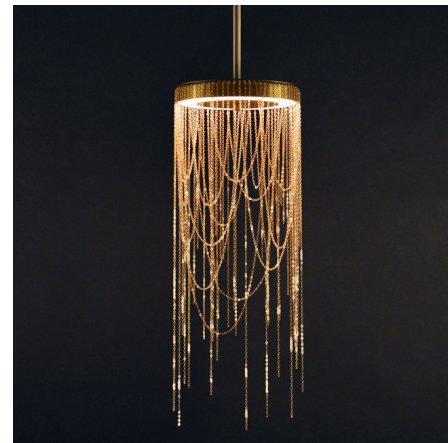
## Otero XS-02 Pendant

By Larose Guyon

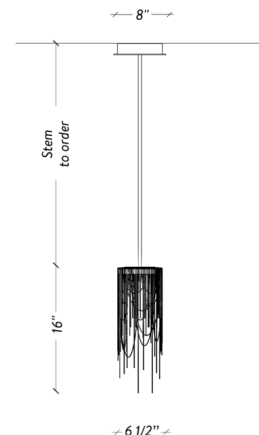


### Description

The Otero XS-02 Pendant dances in luxury with its sculptural elegance that has been hand-crafted with delicate jewelry chains dangling from and curving around the light source. Inspired by the fashion of Paris in the late 1800s, particularly that of famed dancer and actress Caroline Otero, the Otero's delight captures poetic motion while providing decadent decorative lighting. Place this romantic jewel over the dining table, in an entryway foyer, or anyplace where a magical atmosphere is wanted. Warm Dim (2700K-2200K) color temperature.



Shown in aged brass



### Specifications

COLOR . . . . . N/A  
BODY FINISH . . . . . Aged Brass  
WATTAGE . . . . . 8.4W  
DIMMER . . . . . Low Voltage Electronic  
DIMENSIONS . . . . . 6.5"W x 16"H  
INTEGRATED LED MODULE . . . . . 1 x LED/8.4W/120V LED  
COUNTRY OF ORIGIN . . . . . Canada

### Technical Information

LAMP LIFE . . . . . 50000 hours  
LAMP COLOR . . . . . 2700K Warm Dim  
LUMENS/WATT . . . . . 42.86  
LUMINOUS FLUX . . . . . 360 lumens



CLICK TO VIEW PRODUCT

Notes: