

Lightology

lightology.com
866-954-4489
04-21-26

Project: _____
 Company: _____
 Location: _____ Fixture Type: _____
 SPEC #: **SCH1279047**
 Approved On: _____ Approved By: _____

Verve Color-Select Wall Sconce By Schonbek Signature



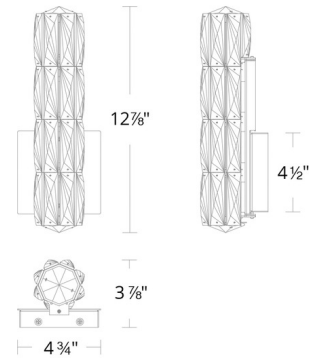
Description

The Verve Color Select Wall Sconce adds a vibrant touch of elegance to your interior space. Rows of crystal baguettes are set between sleek stainless steel bands, casting warm, inviting shadows throughout your room. May be mounted up or down. Driver is concealed within the fixture.

Notes: Color temperature adjustability switch from 3000K/3500K/4000K at time of installation mounted at the back of the mounting plate to be installed within the junction box. Dimmable with Triac (Standard), Low Voltage Electronic, or 0-10V Dimming.



Shown in stainless steel / radiance crystal



52613

Specifications

COLOR	Radiance Crystal
BODY FINISH	Stainless Steel
WATTAGE	11.5W
DIMMER	Standard 120V
DIMENSIONS	4.75"W x 12.875"H x 3.875"D
INTEGRATED LED MODULE	1 x LED/11.5W/120-277V LED

Technical Information

LAMP COLOR	CCT Select
LUMENS/WATT	44.35
LUMINOUS FLUX	510 lumens



CLICK TO VIEW PRODUCT

Notes: