

Lightology

lightology.com
866-954-4489
06-15-26

Project: _____
 Company: _____
 Location: _____ Fixture Type: _____
 SPEC #: **WAC1362220**
 Approved On: _____ Approved By: _____

FQ 4 inch Square Warm Dim Adjustable Trimless Downlight By WAC Lighting



Description

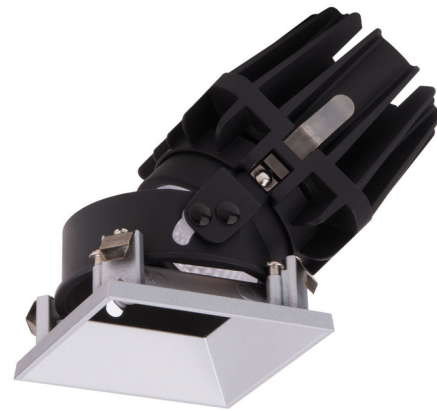
The FQ 4 Inch Square Warm Dim Trimless Adjustable Downlight Trim is designed for use with FQ 4 Inch Series of recessed housings by WAC Lighting. This high performance LED luminaire will provide quality lighting in both commercial and residential settings. Features glare control with 30 degree shielding, 45 degree vertical tilting and 365 degree horizontal rotation. Warm Dim 3000K-1800K color temperature. Ceiling cutout: 4.75 inch. Accommodates 0.5 to 1 inch ceiling thickness. Dimmable with TRIAC and ELV at 120V. Dimmable with 0-10V at 277V. Note 1: Field changeable beam angle with reflectors provided (30 degree pre-installed, 50 degree). Lumens shown are based on 30 degree beam angle with 19 watt housing. Note 2: A complete fixture requires the trim and a housing, sold separately. Compatible with 13 watt and 19 watt housings

Specifications

COLOR	N/A
BODY FINISH	Haze
WATTAGE	N/A
DIMMER	Low Voltage Electronic
DIMENSIONS	3"W x 5.63"H
INTEGRATED LED MODULE	LED/120-277V LED

Technical Information

APERTURE SHAPE	Square
CEILING TYPE	Drywall Trimless/Flush
FUNCTION	Adjustable Accent
LAMP LIFE	90 hours
COLOR RENDERING	.90 CRI
LAMP COLOR	3000K Warm Dim
LUMINOUS FLUX	910 lumens



Shown in haze

Model	Beam	*Lumens	*CRP	Color Temp	CR	Finish	Reflector/Trim
R4FSAL Recessed Trimless	F 30° W 50°	910 890	2045 1740	WD 3000K-1800K	90	BC DB HC WT	Black Dark Bronze White White

R4FSAL-WD-

Example: R4FSAL-WD-BK (Beam F-30° reflector is pre-installed. Beam W-50° reflector is included)

*Lumens and CRCP are reference values for WD trim with 2 housing. Use multiplier table below to determine the output for the other combination.

HOUSING	Multiplier		TOTAL
	2	1	
2	1.00	0.69	

Example: R4FSAL-WD-WT with F-30° beam in 1 housing: 910 lm (Reference Output) x 0.69 (Multiplier) = 628 lm
 2045 CRCP (Reference Output) x 0.69 (Multiplier) = 1411 CRCP

Housing 1: 13 Watt
Housing 2: 19 Watt



CLICK TO VIEW PRODUCT

Notes: