

Lightology

lightology.com
866-954-4489
04-27-26

Project: _____
 Company: _____
 Location: _____ Fixture Type: _____
 SPEC #: **WAC1362424**
 Approved On: _____ Approved By: _____

FQ 2 inch Round/Square With Trim New Construction Housing By WAC Lighting



Description

The FQ 2 Inch New Construction Housing is designed for with trim round or square trims. Available in a 21 Watt (IC rated) or 25 Watt (Non-IC rated) option. New construction housings included with universal mounting brackets and hanger bars. Ceiling cutout (Round and Square): 3 1/2 inch. Ceiling thickness: 1/2 - 1 inch. Universal 120/277 with Electronic Low Voltage (ELV): 100%-1% and TRIAC: 100%-1% at 120V, or 0-10V: 100-1% at 277V. Emergency (EM) fixtures provided with integral emergency battery back up with 24 inch lead wire remote test switch. Provides at least 90 minutes of 6W illumination during emergency operation. NOTE: A complete fixture requires a housing and trim (round or square), sold separately. See trim for lumens.

Specifications

COLOR	N/A
BODY FINISH	Galvanized Steel
WATTAGE	25W
DIMMER	Low Voltage Electronic
DIMENSIONS	17.37"W x 5.87"H x 10"D
INTEGRATED LED MODULE	LED/25W/120-277V LED

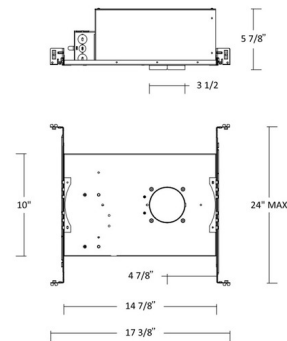
Technical Information

HOUSING HEIGHT	6"
HOUSING TYPE	New construction NON IC Airtight
CEILING TYPE	Drywall with Trim



Shown in galvanized steel

New Construction Trimmed | R2FBNT Round and Square



CLICK TO VIEW PRODUCT

Notes: