

Lightology

lightology.com
866-954-4489
04-12-26

Project: _____

Company: _____

Location: _____ Fixture Type: _____

SPEC #: **PBL1379632**

Approved On: _____ Approved By: _____

Totem Wall Sconce

By Pablo



Description

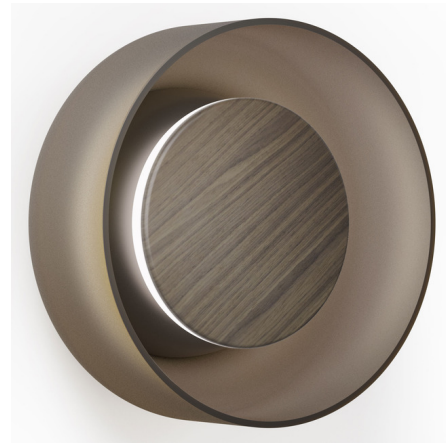
Inspired by the softly curved forms of its table lamp and pendant counterparts, the Totem Wall Sconce is a versatile fixture that will seamlessly integrate into any interior. Totem provides pleasant, warm illumination from its integrated LED, which is shielded by a metal faceplate and polycarbonate diffuser to reduce glare and surrounded by a blown glass shade. Totem is perfect for lining hallways, bathrooms, or bedrooms in hospitality and residential spaces alike to provide soothing, indirect illumination. ELV, TRIAC or 0-10V dimmable. CCT select allows the color temperature to be set to 2700/3000/3500K during installation. Note: Brass and Walnut Essence painted faceplate finishes are available with all shade colors. Black finished faceplate is only available with Etched Amber and Smoke shade colors. Dove Grey is only available with Clear shade. White is only available with Etched White shade.

Specifications

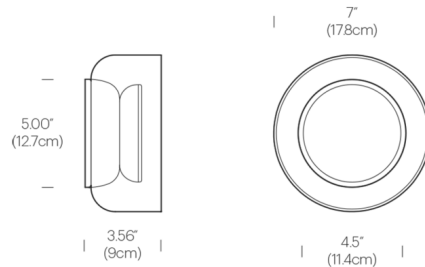
COLOR Etched Amber
BODY FINISH Walnut Essence
WATTAGE 8W
DIMMER Low Voltage Electronic
DIMENSIONS 7.25"W x 7.25"H x 3.56"D
INTEGRATED LED MODULE 1 x LED/8W/120V LED

Technical Information

COLOR RENDERING 90 CRI
LAMP COLOR 2700K
LUMENS/WATT 62.50
LUMINOUS FLUX 500 lumens



Shown in walnut essence / etched amber



CLICK TO VIEW PRODUCT

Notes: