

# Lightology

lightology.com  
866-954-4489  
08-04-25

Project: \_\_\_\_\_  
Company: \_\_\_\_\_  
Location: \_\_\_\_\_ Fixture Type: \_\_\_\_\_  
SPEC #: **VCG1382774**  
Approved On: \_\_\_\_\_ Approved By: \_\_\_\_\_

## Amity Pendant

By Visual Comfort Signature

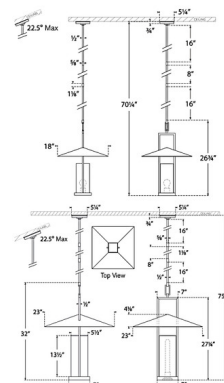


### Description

The Amity Pendant draws inspiration from classic Asian lanterns, featuring a geometric design. Its shallow upper shade is divided by an elongated metal trapeze that supports a cylindrical glass, which emits a warm illumination throughout your room. Note: Clear with Antique Burnished Brass is not available in the 32 inch height. Custom Overall Heights are available. For quotes, please contact our sales team.



Shown in antique brass / clear



### Specifications

COLOR . . . . . Clear  
BODY FINISH . . . . . Antique Brass  
WATTAGE . . . . . 8W  
DIMMER . . . . . Standard 120V  
DIMENSIONS . . . . . 18"W x 26.5"H  
BULB NOT INCLUDED . . . . . 1 x A19/Medium (E26)/8W/120V LED

### Technical Information

PRODUCT DIMENSIONS . . . . . Downrods: One 8" and Two 16" Included



CLICK TO VIEW PRODUCT

Notes: