

# Lightology

lightology.com  
866-954-4489  
08-04-25

Project: \_\_\_\_\_  
Company: \_\_\_\_\_  
Location: \_\_\_\_\_ Fixture Type: \_\_\_\_\_  
SPEC #: **EDG1387711**  
Approved On: \_\_\_\_\_ Approved By: \_\_\_\_\_

## Luca 3.5 inch Round Static White Trimless Fixed Downlight

By PureEdge Lighting



### Description

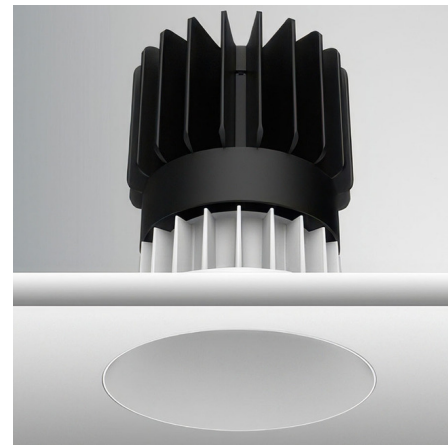
Experience the radiance of Luca 3.5 - a cutting-edge downlight that embodies its Latin namesake as the 'Bringer of Light', a testament to the latest advancements in cutting-edge lighting technology. Luca delivers high performance solutions designed to elevate hospitality, retail, commercial, and discerning residential spaces. Luca downlights distinguish themselves with precision optics and exceptional color rendering. The Luca Downlight series delivers captivating illumination across a wide spectrum, creating a visually engaging experience within any space. With its extensive range of design and installation options, Luca 3.5 is versatile for a wide array of new construction and remodel applications. Moreover, the compact form factor allows for installation in spaces with limited clearance. Includes clear glass and soft diffusing film. Ceiling cut out: 4 inch. Ceiling thickness 0.5 to 1 inch. Available in a variety of color temperature and beam spread options. See housing for wattage/lumen options. NOTE: A complete fixture requires a trim and housing, sold separately. HOUSING LUMEN OPTIONS: 20 Watt = 1610 Lumens 24 Watt = 1802 Lumens 28 Watt = 2113 Lumens

### Specifications

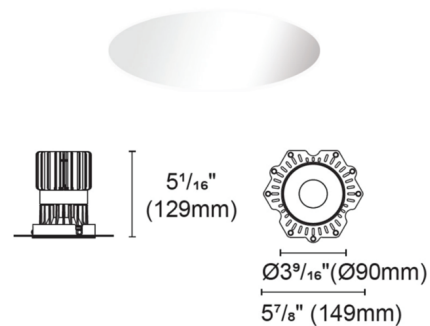
REFLECTOR/BAFFLE COLOR . . . . . White  
BODY FINISH . . . . . N/A  
WATTAGE . . . . . N/A  
DIMMER . . . . . N/A  
DIMENSIONS . . . . . 3.56"W x 5.06"H  
INTEGRATED LED MODULE . . . . . LED/120V LED

### Technical Information

APERTURE SHAPE . . . . . Round  
CEILING TYPE . . . . . Drywall Trimless/Flush  
FUNCTION . . . . . Downlight  
LAMP LIFE . . . . . 50000 hours  
BEAM ANGLE . . . . . 20°  
COLOR RENDERING . . . . . 90 CRI  
LAMP COLOR . . . . . 2400K



Shown in white



CLICK TO VIEW PRODUCT

Notes: