

# Lightology

lightology.com  
866-954-4489  
02-12-26

Project: \_\_\_\_\_  
Company: \_\_\_\_\_  
Location: \_\_\_\_\_ Fixture Type: \_\_\_\_\_  
SPEC #: **EDG1389075**  
Approved On: \_\_\_\_\_ Approved By: \_\_\_\_\_

## Luca 2.7 inch Round Warm Dim Trimless Fixed Downlight

By PureEdge Lighting



### Description

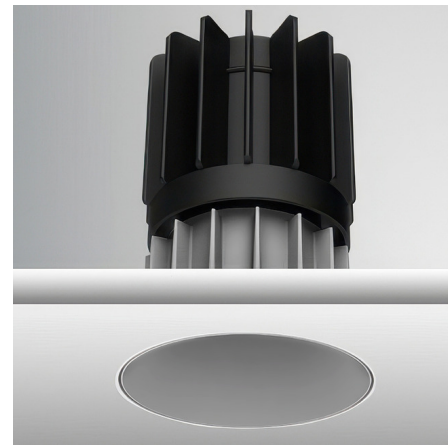
Experience the radiance of Luca 2.7 - a cutting-edge downlight that embodies its Latin namesake as the 'Bringer of Light', a testament to the latest advancements in cutting-edge lighting technology. Luca delivers high performance solutions designed to elevate hospitality, retail, commercial, and discerning residential spaces. Luca downlights distinguish themselves with precision optics and exceptional color rendering. The Luca 2.7 Inch Warm Dim Trimless Fixed Downlight series delivers captivating illumination across a wide spectrum, creating a visually engaging experience within any space. With its extensive range of design and installation options, Luca 2.7 is versatile for a wide array of new construction and remodel applications. Moreover, the compact form factor allows for installation in spaces with limited clearance. Includes clear glass and soft diffusing film. Ceiling cut out: 3 inch. Ceiling thickness 0.5 to 1 inch. Available in Warm Dim (3000K - 2000K color temperature and a variety beam spread options. See housing for wattage/lumen options. NOTE: A complete fixture requires a trim and housing, sold separately. HOUSING LUMEN OPTIONS: 16 Watt = 821 Lumens 20 Watt = 905 Lumens 24 Watt = 988 Lumens

### Specifications

REFLECTOR/BAFFLE COLOR	Haze
BODY FINISH	N/A
WATTAGE	N/A
DIMMER	N/A
DIMENSIONS	2.75"W x 4.31"H
BULB NOT INCLUDED	LED/120V LED

### Technical Information

APERTURE SHAPE	Round
CEILING TYPE	Drywall Trimless/Flush
FUNCTION	Downlight
LAMP LIFE	50000 hours
BEAM ANGLE	15°
COLOR RENDERING	90 CRI
LAMP COLOR	3000K Warm Dim



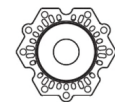
Shown in haze



Round Trimless



4<sup>5</sup>/<sub>16</sub>"  
(109mm)



Trimless  
Flange

Ø2<sup>3</sup>/<sub>4</sub>"(Ø70mm)  
Ø4<sup>3</sup>/<sub>4</sub>"(Ø121mm)



CLICK TO VIEW PRODUCT

Notes: