

# Lightology

lightology.com  
866-954-4489  
04-27-26

Project: \_\_\_\_\_  
 Company: \_\_\_\_\_  
 Location: \_\_\_\_\_ Fixture Type: \_\_\_\_\_  
 SPEC #: **EDG1443574**  
 Approved On: \_\_\_\_\_ Approved By: \_\_\_\_\_

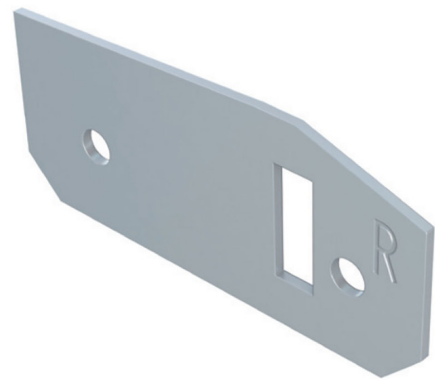
## DIY Reveal Cove/Pathway Dead End Cap Plate

By PureEdge Lighting

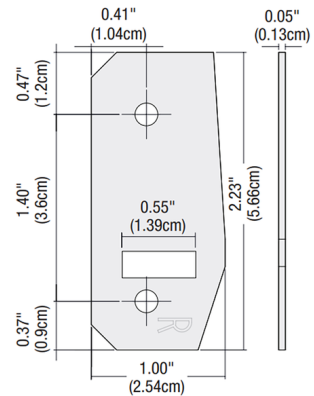


### Description

The Dead End Cap Plate provides a finished look and prevents light leak at feed-end of run where LED Strip exits channel. For replacement only.  
 Note: Designed for use with PureEdge DIY (Do-It-Yourself) Reveal Cove/Pathway Plaster-In LED System.



Shown in white



### Specifications

|             |              |
|-------------|--------------|
| COLOR       | N/A          |
| BODY FINISH | White        |
| WATTAGE     | N/A          |
| DIMMER      | N/A          |
| DIMENSIONS  | 1"W x 2.23"H |
| BULB        | N/A          |



CLICK TO VIEW PRODUCT

Notes: