

Lightology

lightology.com
866-954-4489
02-12-26

Project: _____
Company: _____
Location: _____ Fixture Type: _____
SPEC #: **OBL1459672**
Approved On: _____ Approved By: _____

Trapeze Single Pendant

By Oblure



Description

The Trapeze Pendant features a pair of half-moon shaped shades mounted together. Each shade can be rotated 360 degrees, allowing for the simultaneous combination of uplight and downlight, offering both playful flexibility and practical functionality. Its bold yet pragmatic form makes it ideal for dynamic lighting arrangements. Note: Fixture does not fit on a standard 4in junction box.

Specifications

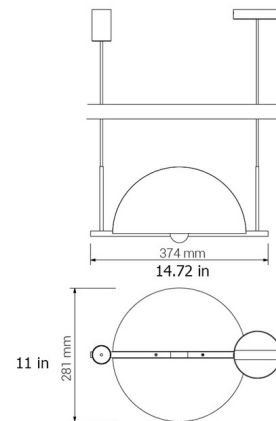
COLOR N/A
BODY FINISH Black
WATTAGE 18W
DIMMER Standard 120V
DIMENSIONS 11.06"W x 14.72"H
BULB NOT INCLUDED 2 x B10/Candelabra (E12)/9W/120V LED

Technical Information

PRODUCT DIMENSIONS Cord: 118"



Shown in black



CLICK TO VIEW PRODUCT

Notes: